

Concealed valve Doc M shower pack with stainless steel luxury concealed fixing grab rails and slimline shower seat



Product details

- Warranty: See individual products
- Max rated load: See individual products
- Doc M compliant: Yes
- Suitable for wet areas: Yes

Features

- Complies with Part M of the Building Regulations
- TMV3 & WRAS approved valve & diverter
- Concealed valve and diverter with extended levers
- Non-corrosive concealed fixings stainless steel grab rails & hinged support rails
- Simple one box solution

Finish options



Matt black
RAL 9005



Satin
Stainless Steel



Polished
Stainless Steel

Product description

Product code

Concealed valve Doc M shower pack, stainless steel, luxury grab rails, slimline shower seat

321104/**

Replace ** with finish option code above e.g., 321104/SP

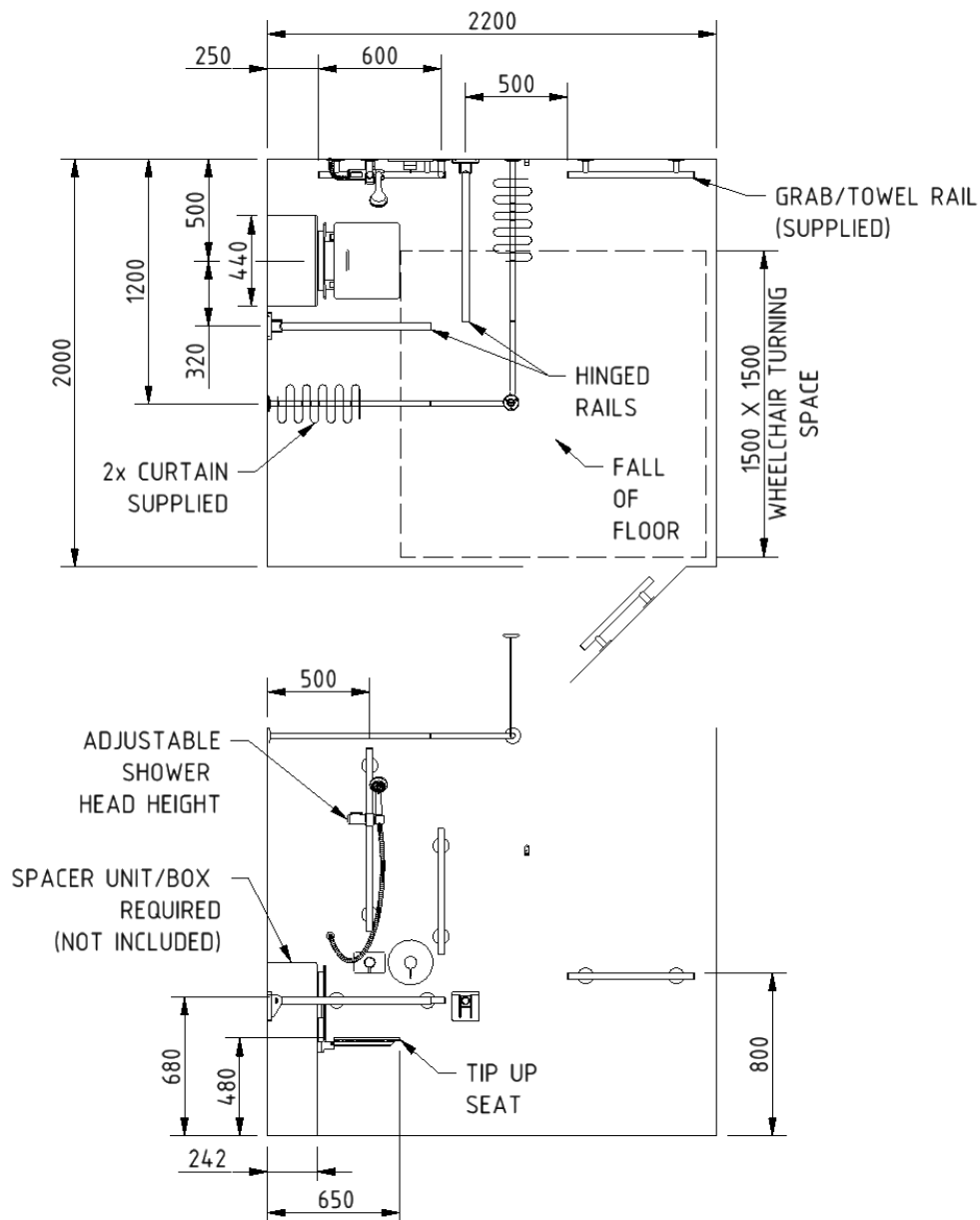
Disclaimer

NYMAS Group makes every effort to ensure that the information provided on this data sheet is correct. However, we cannot guarantee this, and accept no liability for any information or advice given on this data sheet.

Pack contents

- 1 x Slimline shower seat
- 1 x Concealed TMV3 Doc M shower valve
- 1 x Concealed Doc M shower diverter
- 1 x Antivandal overhead shower head
- 1 x Shower head and hose
- 3 x 600mm Stainless steel luxury grab rails with concealed fixings
- 1 x 450mm Stainless steel luxury grab rail with concealed fixings
- 1 x 900mm Stainless steel luxury grab rail with concealed fixings
- 2 x 800mm Stainless steel contemporary hinged support rails with concealed fixings
- 1 x 1200mm x 1200mm Stainless steel shower curtain rail
- 2 x Weighted shower curtains
- 1 x Sliding Shower head bracket
- 1 x Single robe hook

Dimensions (mm)



Concealed TMV3 shower valve and diverter kit



Product details

| | |
|-------------------------|---------|
| Warranty: | 5 years |
| Max rated load: | n/a |
| Doc M compliant: | Yes |
| Suitable for wet areas: | Yes |

Features

- Complies with Part M of the Building Regulations
- Single sequential control for both temperature and flow
- High performance even at low pressure
- Automatic shut off in the event of hot or cold water supply failure
- Easy isolation and filter removal
- Integral thermal flushing for infection control
- Brass construction
- WRAS approved
- TMV3 approved

Finish options



Polished
chrome

Product description

Concealed TMV3 shower valve and diverter kit

Product code

COM-NYOPTS3650CLCKIT

Pack contents

- 1x Concealed diverter
- 1x Concealed valve
- 1x Fixed shower head

Disclaimer

NYMAS Group makes every effort to ensure that the information provided on this data sheet is correct. However, we cannot guarantee this, and accept no liability for any information or advice given on this data sheet.

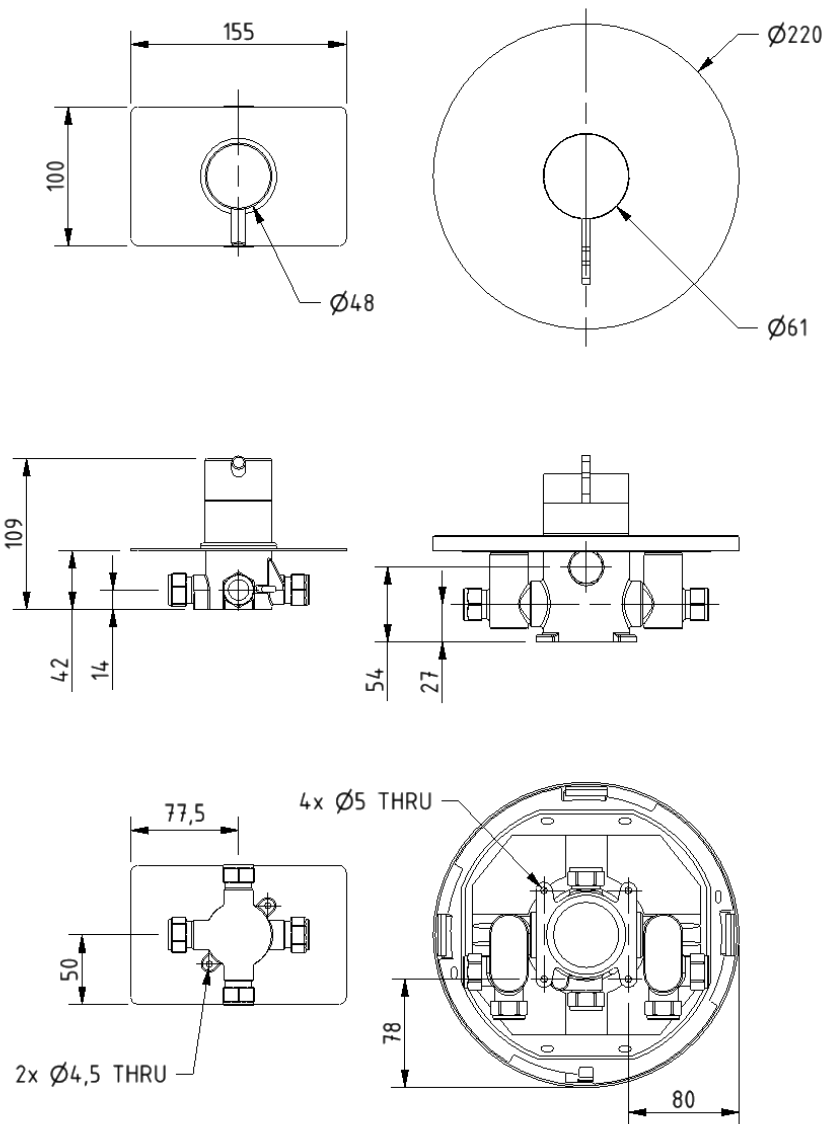
Flo rates (l/min)

| | | | | | | |
|-----------------------|-----|-----|---|---|-----|---|
| System pressure (bar) | 0.2 | 0.5 | 1 | 2 | 3 | 5 |
| Open outlet (mixed) | 3.9 | 6.3 | 6 | 7 | 7.5 | 8 |

Specification

- Maximum hot water supply temperature: 65 degrees Celsius
- Maximum statis pressure: 10 bar
- Minimum dynamic pressure: 02 bar MIN, 5 bar MAX
- Connection inlet: 15mm compression
- Connection outlet: G ½"

Dimensions (mm)



Contemporary slimline wall mounted shower seat with back rest



Product details

| | |
|-------------------------|---------|
| Warranty: | 5 years |
| Max rated load: | 100 kg |
| Doc M compliant: | No |
| Suitable for wet areas: | Yes |

Features

- Minimalist contemporary design
- Brushed aluminium wall mounting system
- Drainage hole in seat
- Back rest for optimum comfort
- Lift and lock hinge mechanism

Finish options



Black
RAL 9005



White
RAL 9016

Product description

Contemporary slimline shower seat, back rest, black
Contemporary slimline shower seat, back rest, white

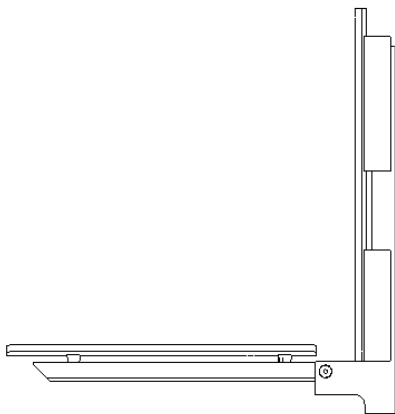
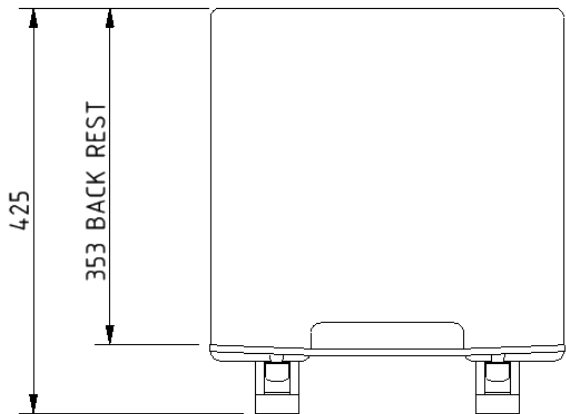
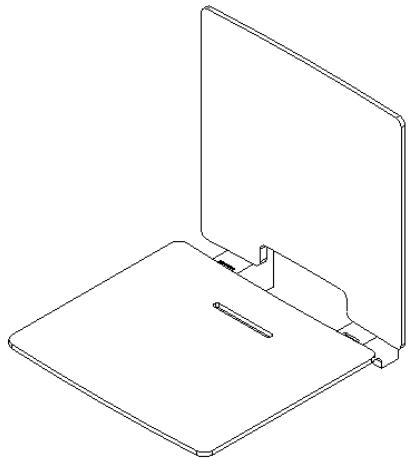
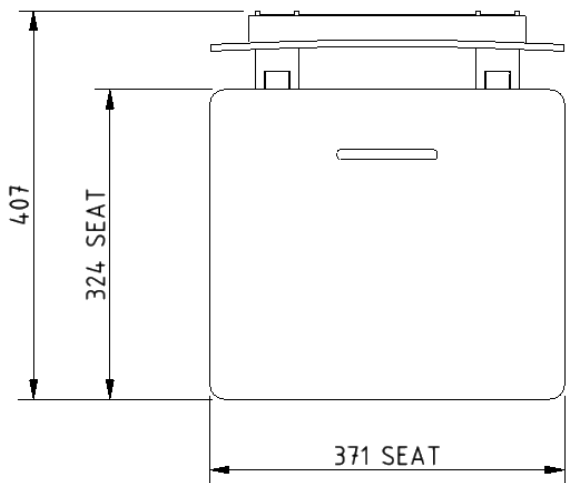
Product code

331003/BL
331003/WH

Disclaimer

NYMAS Group makes every effort to ensure that the information provided on this data sheet is correct. However, we cannot guarantee this, and accept no liability for any information or advice given on this data sheet.

Dimensions (mm)



Luxury straight stainless steel grab rail with concealed fixings



Product details

| | |
|-------------------------|---------|
| Warranty: | 5 years |
| Max rated load: | 200 kg |
| Doc M compliant: | Yes |
| Suitable for wet areas: | Yes |

Features

- High quality stainless steel construction
- Concealed fixings
- Stylish T-bar design
- Complies with Part M of the Building Regulations

Finish options



Satin
Stainless Steel



Polished
Stainless Steel



Matt black
RAL 9005

Product description

Product code

| |
|---|
| Luxury grab rail, straight, stainless steel, concealed fixings, 355mm |
| Luxury grab rail, straight, stainless steel, concealed fixings, 480mm |
| Luxury grab rail, straight, stainless steel, concealed fixings, 620mm |
| Luxury grab rail, straight, stainless steel, concealed fixings, 900mm |

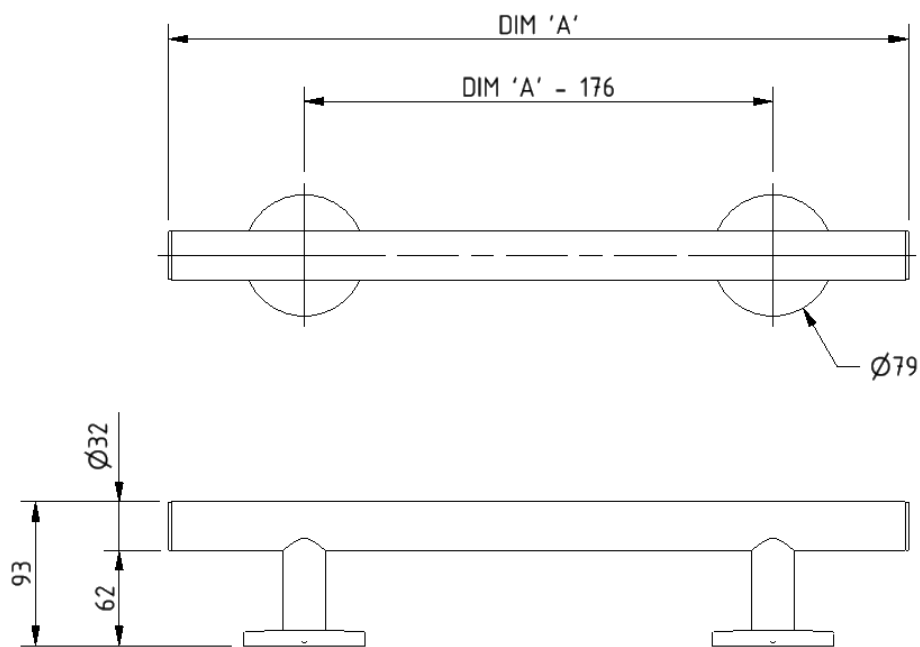
| |
|-----------|
| 311435/** |
| 311448/** |
| 311462/** |
| 311490/** |

Replace ** with finish option code above e.g., 311435/SP

Disclaimer

NYMAS Group makes every effort to ensure that the information provided on this data sheet is correct. However, we cannot guarantee this, and accept no liability for any information or advice given on this data sheet.

Dimensions (mm)



| PRODUCT CODE | 311435/** | 311448/** | 311462/** | 311490/** |
|--------------|-----------|-----------|-----------|-----------|
| DIM 'A' | 355 | 480 | 620 | 900 |

Contemporary stainless steel single arm friction hinged rail with concealed fixing



Product details

| | |
|-------------------------|---------|
| Warranty: | 5 years |
| Max rated load: | 90 kg |
| Doc M compliant: | Yes |
| Suitable for wet areas: | Yes |

Features

- Contemporary single arm design
- Premium friction folding mechanism
- High quality stainless steel construction
- Complies with Part M of the Building Regulations

Finish options



Satin
Stainless Steel



Polished
Stainless Steel



Matt black
RAL 9005

Product description

Product code

Contemporary single arm friction rail, stainless steel, concealed fixings

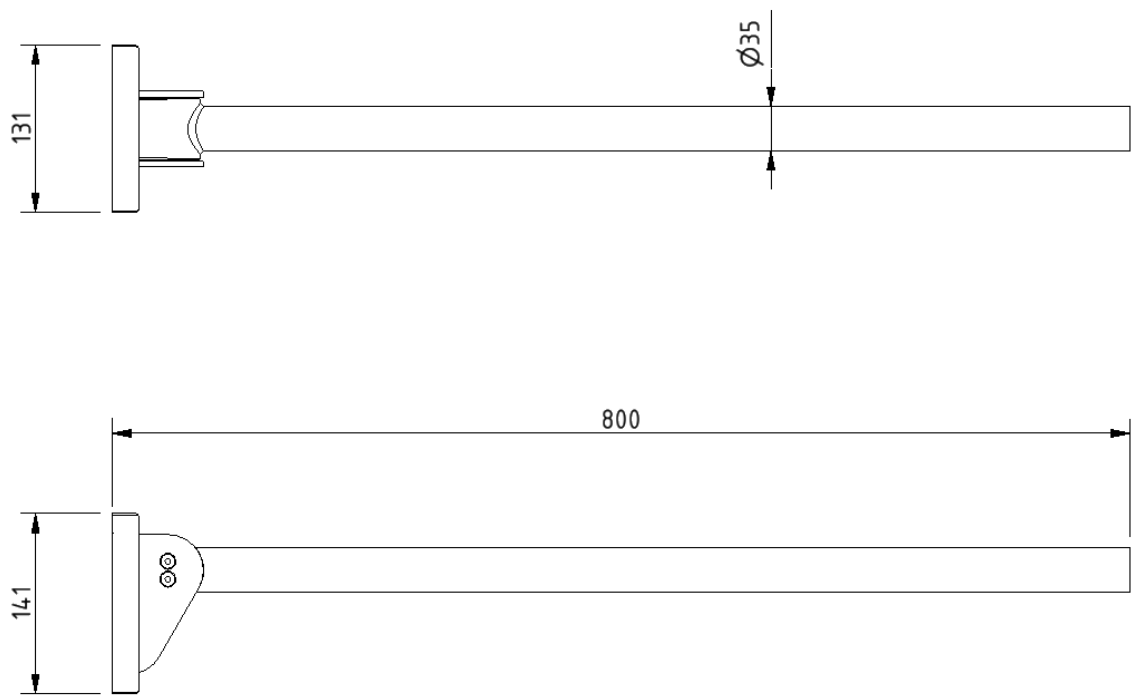
310480C/**

Replace ** with finish option code above e.g., 310480C/SP

Disclaimer

NYMAS Group makes every effort to ensure that the information provided on this data sheet is correct. However, we cannot guarantee this, and accept no liability for any information or advice given on this data sheet.

Dimensions (mm)



Stainless steel L-shaped shower curtain rail, 1200mm x 1200mm



Product details

| | |
|-------------------------|---------|
| Warranty: | 5 years |
| Max rated load: | n/a |
| Doc M compliant: | Yes |
| Suitable for wet areas: | Yes |

Features

- Tubular stainless steel construction
- Supplied with ceiling stay
- Concealed wall fixings
- Can be cut to measure on site if necessary

Finish options



White
RAL 9016



Satin
Stainless Steel



Polished
Stainless Steel

Product description

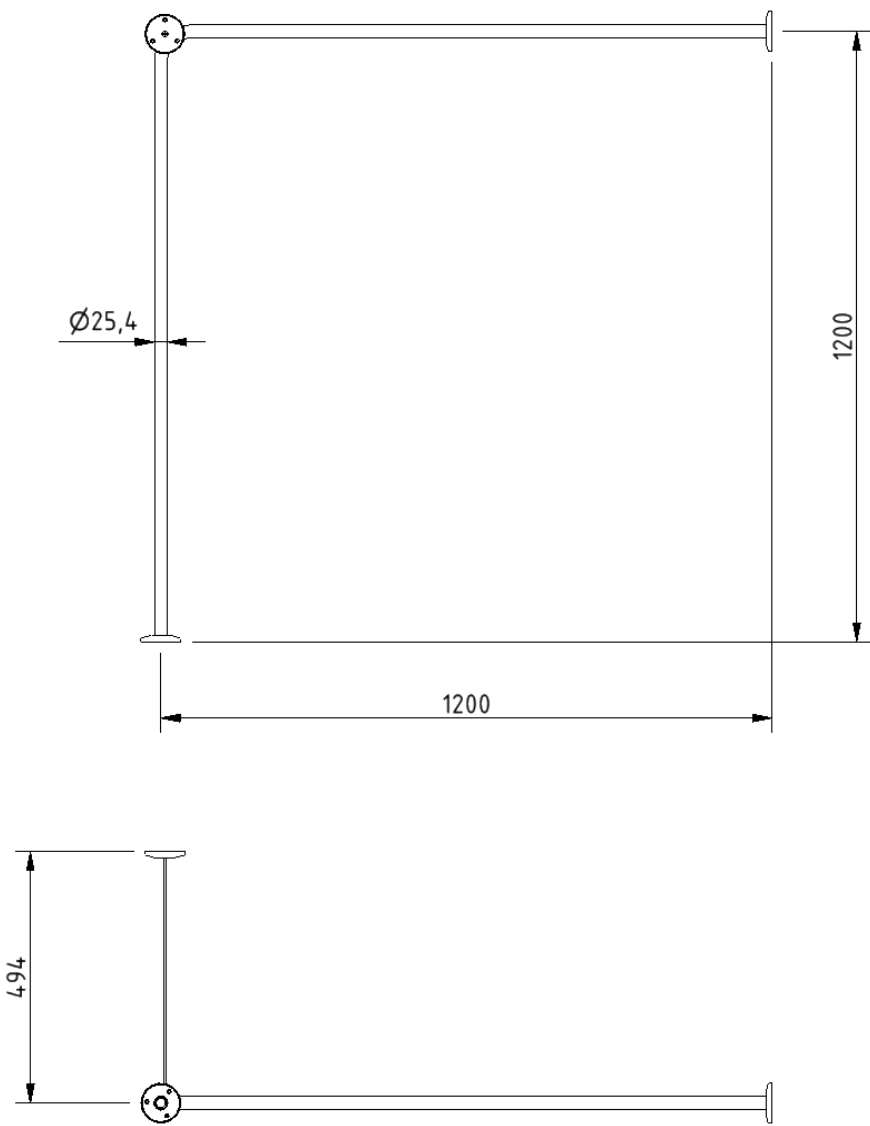
Product code

| | |
|---|-----------|
| Shower curtain rail, stainless steel, L-shaped, 1200x1200mm, polished | 250502/SP |
| Shower curtain rail, stainless steel, L-shaped, 1200x1200mm, satin | 250502/SS |
| Shower curtain rail, stainless steel, L-shaped, 1200x1200mm, white (RAL 9016) | 250502/WH |

Disclaimer

NYMAS Group makes every effort to ensure that the information provided on this data sheet is correct. However, we cannot guarantee this, and accept no liability for any information or advice given on this data sheet.

Dimensions (mm)



Single aluminium robe hook



Product details

| | |
|-------------------------|---------|
| Warranty: | 2 years |
| Max rated load: | n/a |
| Doc M compliant: | Yes |
| Suitable for wet areas: | Yes |

Features

- Aluminium construction
- Colour options available for visually impaired
- Complies with Part M of the Building Regulations

Finish options

WH

White
RAL 9016

DB

Dark blue
RAL 5011

DG

Dark grey
RAL 7016

GY

Grey
RAL 7005

Product description

Product code

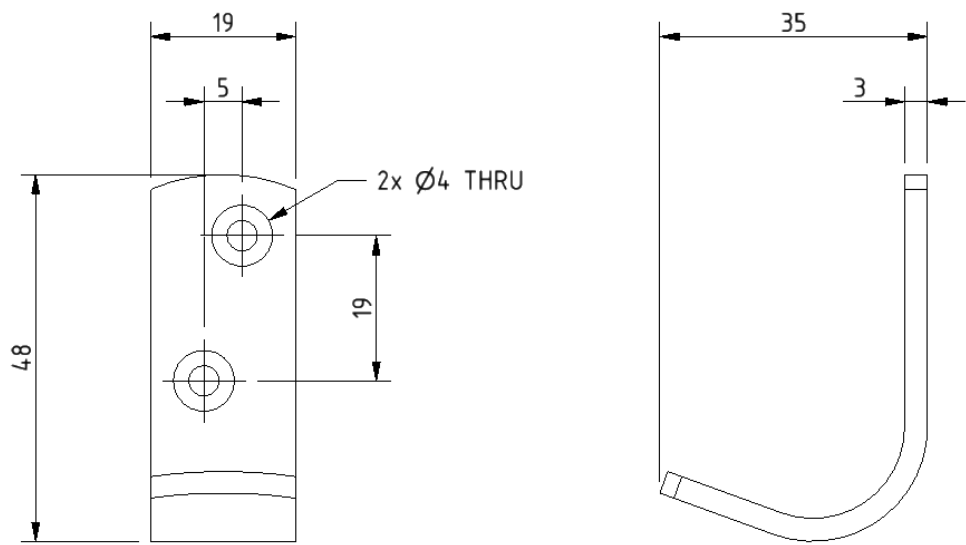
| |
|---|
| Single robe hook, aluminium, dark blue (RAL 5011) |
| Single robe hook, aluminium, dark grey (RAL 7016) |
| Single robe hook, aluminium, grey (RAL 7005) |
| Single robe hook, aluminium, white (RAL 9016) |

| |
|-----------|
| 141701/DB |
| 141701/DG |
| 141701/GY |
| 141701/WH |

Disclaimer

NYMAS Group makes every effort to ensure that the information provided on this data sheet is correct. However, we cannot guarantee this, and accept no liability for any information or advice given on this data sheet.

Dimensions (mm)



Sliding shower head bracket



Product details

| | |
|-------------------------|---------|
| Warranty: | 5 years |
| Max rated load: | n/a |
| Doc M compliant: | Yes |
| Suitable for wet areas: | Yes |

Features

- Complies with Part M of the Building Regulations
- Large button for easy operation for users with limited dexterity
- Suitable for use with 32mm diameter rails

Finish options



Polished
chrome

Product description

Product code

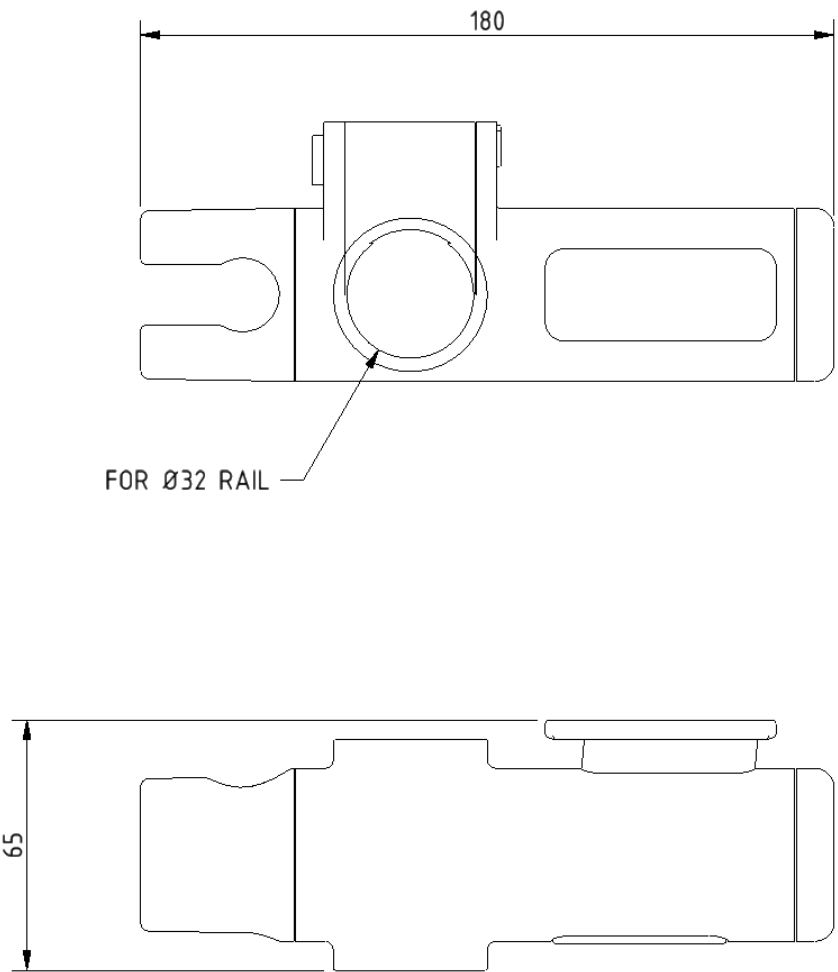
Sliding shower head bracket, for 32mm rail, chrome polished

250401/CP

Disclaimer

NYMAS Group makes every effort to ensure that the information provided on this data sheet is correct. However, we cannot guarantee this, and accept no liability for any information or advice given on this data sheet.

Dimensions (mm)



Weighted polyester shower curtain



Product details

| | |
|-------------------------|---------|
| Warranty: | 5 years |
| Doc M compliant: | Yes |
| Suitable for wet areas: | Yes |

Features

- Easy clean polyester material
- Weighted curtain
- Eyelet hanging
- Durable

Finish options



White
RAL 9016

Product description

Product code

Weighted shower curtain, polyester, 1800mm x 2000mm, white (RAL 9016)

250603/WH

Disclaimer

NYMAS Group makes every effort to ensure that the information provided on this data sheet is correct. However, we cannot guarantee this, and accept no liability for any information or advice given on this data sheet.

Dimensions (mm)

