

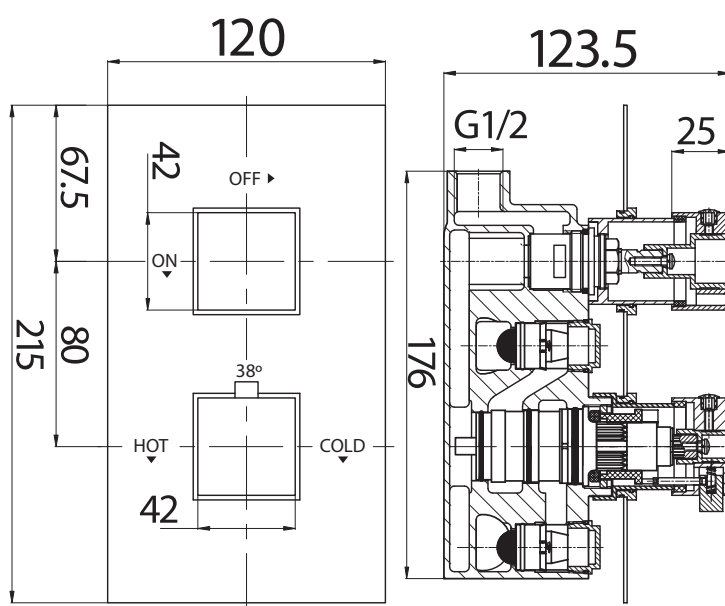
# NOIRE TWIN SQUARE CONCEALED VALVE

## Twin Square Concealed Valve

Product Code NOIRE001



Dimensions  
(measurements in mm)



### Operating Pressure

- 0.2 Bar

### Features

- Manufactured from solid brass.
- Suitable for water systems between 0.2 to 4 bar pressure.
- Suitable for all water systems.
- Thermostatically controlled.
- Built-in anti-scald device.
- Suitable for use with shower pumps.
- 10 year guarantee.

