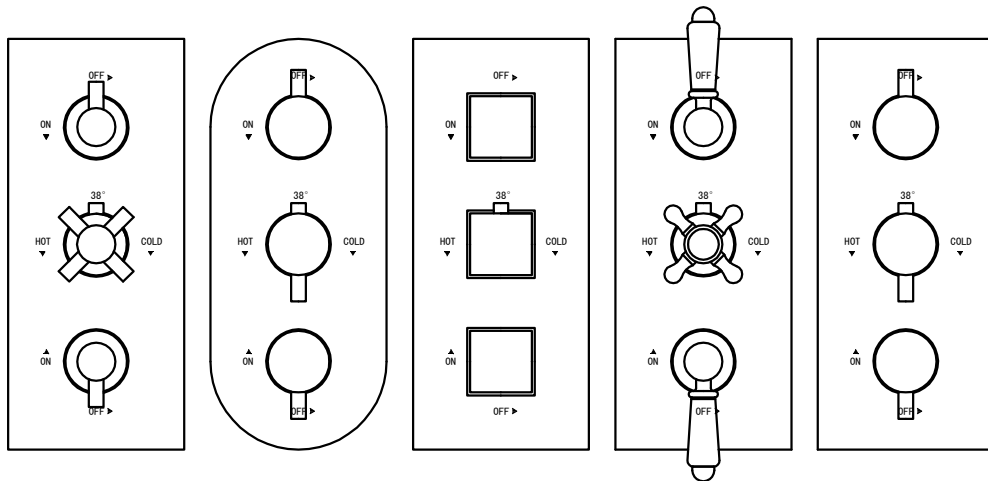
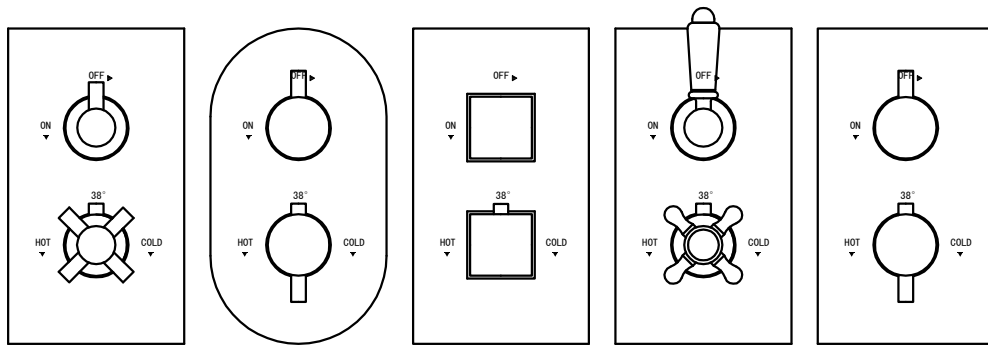


# TWIN & TRIPLE CONTROL CONCEALED THERMOSTATIC SHOWER VALVE INSTALLATION & OPERATING GUIDE

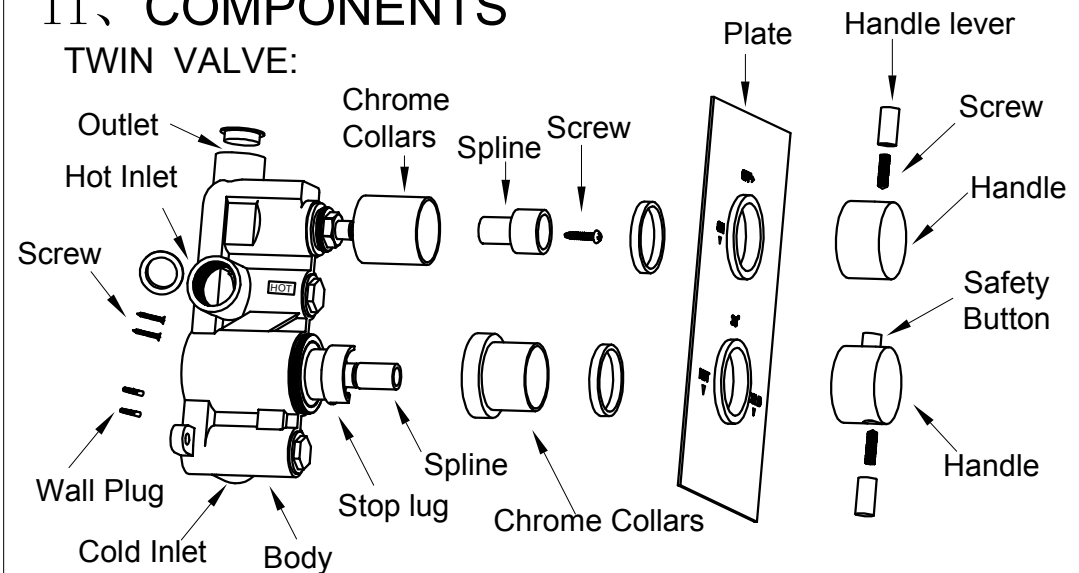


## I、 TECHNICAL DATA

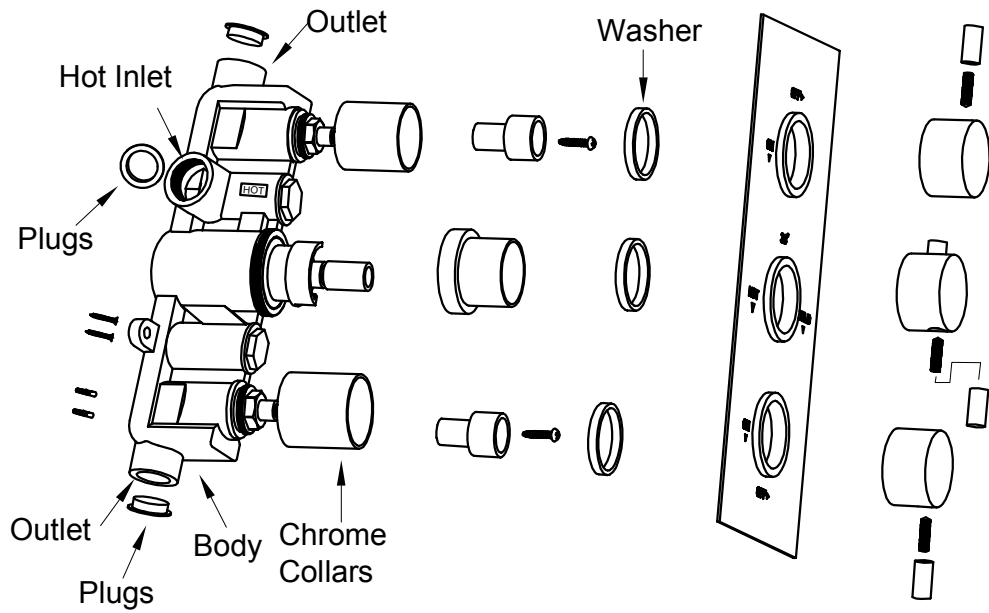
1. Ideal Pressure: 0.2Mpa—0.5Mpa, A reducing valve is required when the water pressure is more than 0.5Mpa.
2. Standard Pressure: Dynamic water pressure  $0.3 \pm 0.02$  Mpa.
3. Cold Supply Temperature:  $4-29^{\circ}\text{C}$ ; Hot Supply Temperature:  $55-58^{\circ}\text{C}$ ; Recommended Water Temperature  $60-70^{\circ}\text{C}$ .
4. Thermostatic Temperature Range  $20-50^{\circ}\text{C}$ .
5. Preset Temperature:  $38^{\circ}\text{C}$ .
6. Safety mechanism: The mixed water will be immediately cut off when the cold supply is not effective.
7. Precise Temperature: It takes about 5 seconds to achieve the desired temperature; The actual working temperature will be within  $\pm 2^{\circ}\text{C}$  of the temperature.
8. Temperature Stability: The outlet temperature variation will be within  $\pm 2^{\circ}\text{C}$  when inlet temperature is stable and cold & hot pressure vary 50%. The outlet temperature variation will be within  $\pm 2^{\circ}\text{C}$  when inlet pressure is stable and hot supply temperature increases from  $60^{\circ}\text{C}$  to  $75^{\circ}\text{C}$  ( $5^{\circ}\text{C}/\text{min}$ ).

## II、 COMPONENTS

### TWIN VALVE:

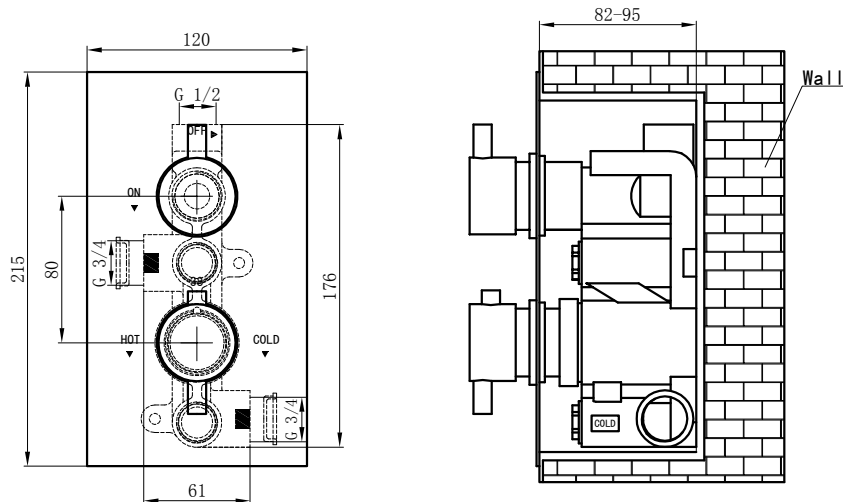


### TRIPLE VALVE:

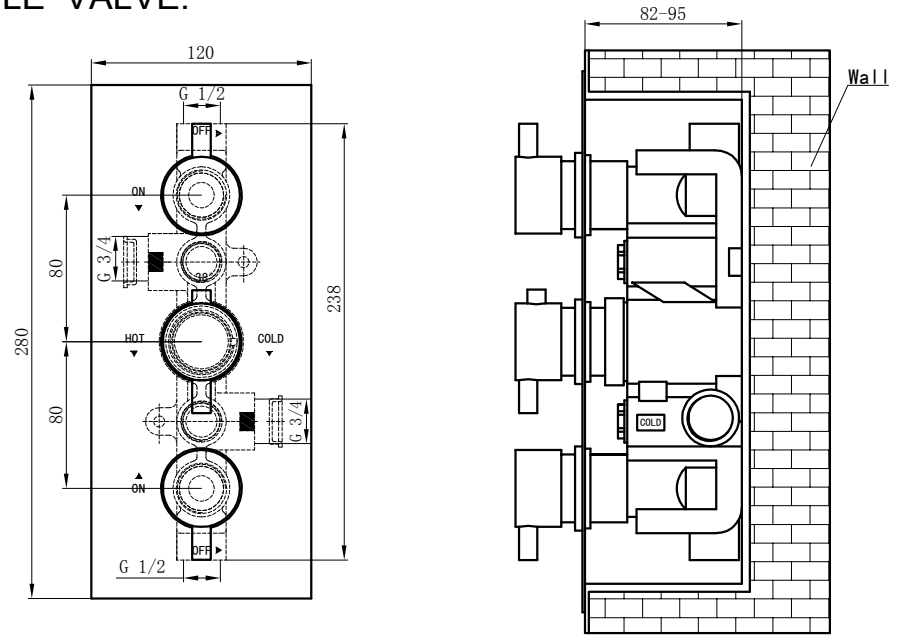


## III、 DIMENSION DRAWING

### TWIN VALVE:

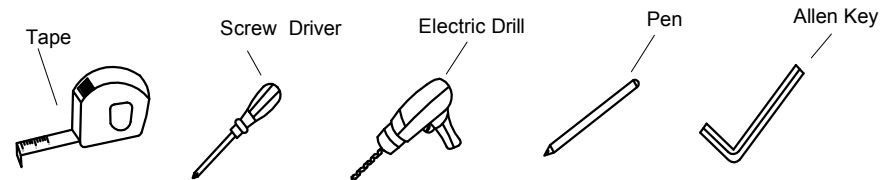


### TRIPLE VALVE:



## IV、 PREPARATION FOR INSTALLATION

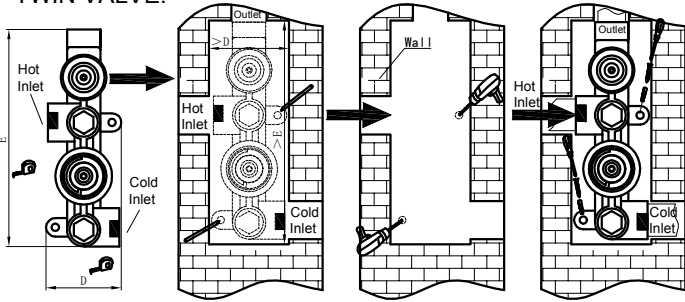
1. Flush out pipework thoroughly to remove debris.
2. Turn off water supply.
3. Carefully take the kit out of the box in case of any scratches, wearing cotton gloves if possible.
4. Identify all components.
5. Tools you might need.



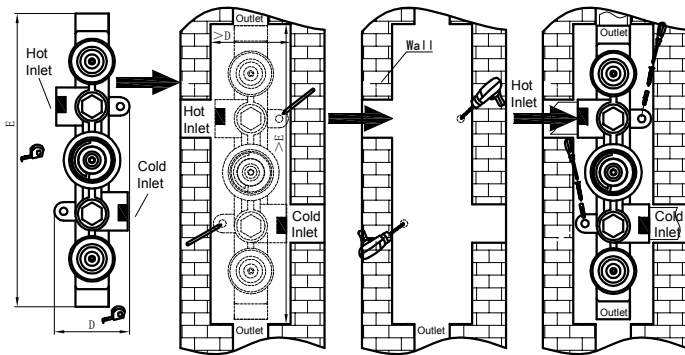
## V. INSTALLATION

1. Determine the fixing position for the valve. Make a recess in the wall according to the dimension of the shower valve and mark required installation holes and sizes. Drill those holes with plastic plugs into them. Connect the inlet and outlet to the correct pipework with necessary sealant. Screw the shower valve body in position, using the mounting lugs that are cast into the base of the body.

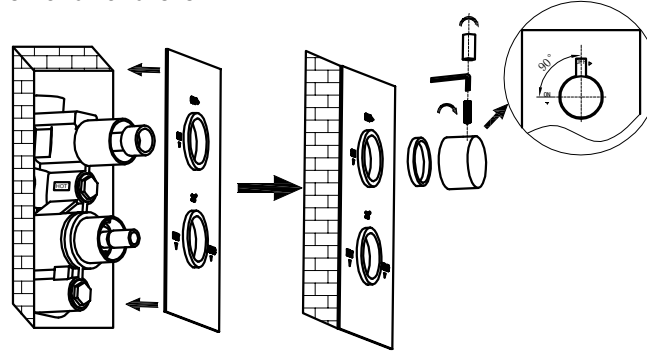
### TWIN VALVE:



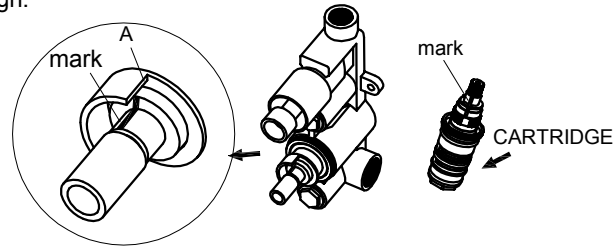
### TRIPLE VALVE:



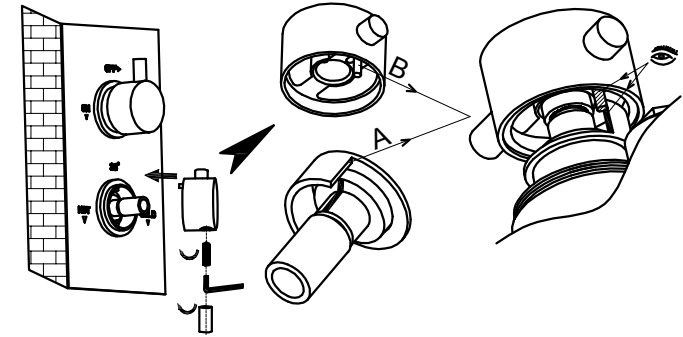
2. Marked secure the concealing plate onto the valve body which is clearly marked. Then fit the rubber washer, handle body, grub screw and hand lever.



3. Factory outlet setting temperature is 38°C when face A aligns the align mark on the cartridge. Do not turn the spindle in case of any movement, which will result in an incorrect factory outlet temperature 38°C. If this is the case, please as shown below re-align.



4. Fit the stop lug and handle body with part A and B (fix stopper) aligned. Then screw and tighten handle lever.



5. YOUR SHOWER VALVE IS NOW READY FOR USE

