

EVOQUE C/C PAN, SEAT & CISTERN



ILLUSTRATION: EVOQUE C/C PAN & CISTERN

**CODE: C/C WC PAN - POT650EV
C/C CISTERN - POT651EV
SOFT CLOSE SEAT - POT652EV**

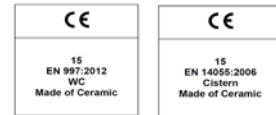
COLOUR: WHITE

WEIGHT:	WC PAN	CISTERN	SEAT
NET:	30 KG	11 KG	2.2 KG
GROSS:	31 KG	12 KG	2.4 KG

STANDARDS: BS EN 997 WCs

BS EN 14055:2010 FLUSHING CISTERNS

BS 3402

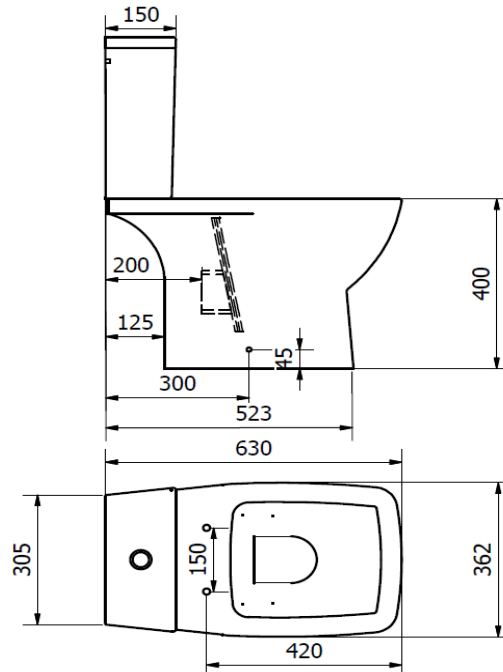
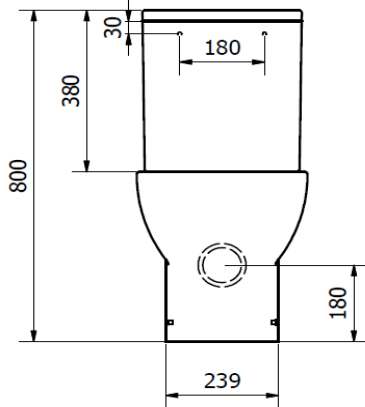


NOTES:

VITREOUS CHINA

WATER SAVING 6/4 LITRE FLUSH

SOFT CLOSE SEAT WITH QUICK RELEASE TOP FIX HINGE



BOX SIZES :- WC PAN = 400 X 460 X 650 mm / CISTERN = 170 X 430 X 390 mm