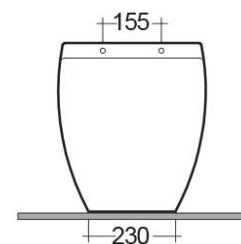
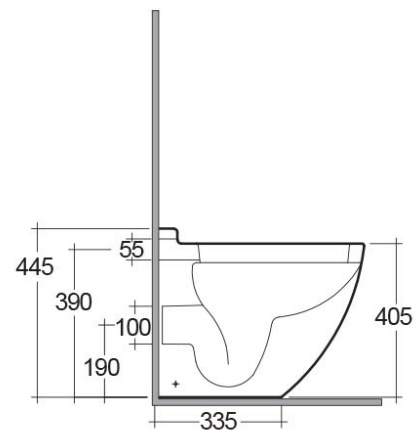
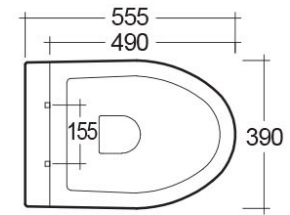


# RAK-RESERVA

## Back to Wall | Water Closet

**RAK**  
CERAMICS



### Technical specifications

Dimensions: 555 x 390 mm

Weight: 27 Kg

Color: Alpine White

Trap type: P Trap

Trapway type: Concealed

Seat cover options: Urea

Bowl shape: Oval

Soft close: yes

Quick remove seat cover: yes

Dual flush: yes

Suites: [RAK-RESERVA](#)

Code	Name
------	------

RS16AWHA	RESERVA WATER CLOSET BACK TO WALL P-TRAP 55CM
----------	---

Dimensions: All measurements are in millimeters and are subject to normal manufacturing variations.  
Note: Due to a continuing development programme to improve design and performance, the manufacturer reserves all rights to vary specifications without prior information.  
Please note accessories are for photographic use only.