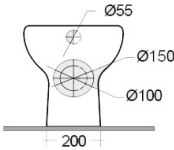
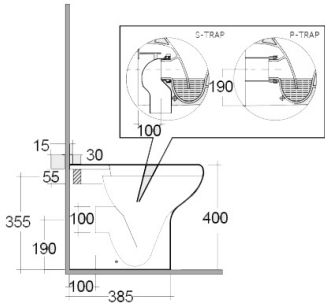
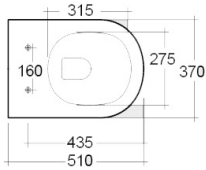


RAK-COMPACT
Back to Wall | Water Closet

RAK
 CERAMICS



21.0 Kg.

TECHNICAL SPECIFICATIONS

Suite:	RAK-COMPACT
Type:	Back to Wall
Dimensions:	510 x 370 mm
Weight:	21 Kg
Color:	Alpine White
Trap type:	P Trap & S Trap
Trapway type:	Concealed
Seat cover options:	Urea
Bowl shape:	Round
Flush Type:	Dual Flush
Flush Capacity:	N/A

Code	Name
COI7AWHA	COMPACT WATER CLOSET BACK TO WALL P S-TRAP 5ICM
JM05DSCQRAWHA	RAK-Jumeriah ABS Soft Close Seat and Cover with Quick Release
JM05DNCQRAWHA	RAK-Jumeriah ABS Normal Close Seat and Cover with Quick Release
YFG173	RAK-Compact Urea Seat Cover

Dimensions: All dimensions in mm. Tolerance of vitreous china & fireclay items: $\pm 5\%$ for below 200mm and $\pm 3\%$ for above 200mm; for all other items tolerance $\pm 1\%$. Note: Due to a continuing development program to improve design and performance, the manufacturer reserves all rights to vary specifications without prior information. Please note accessories are for photographic use only.