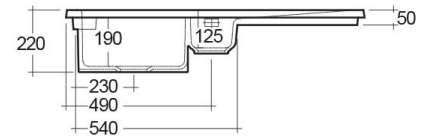
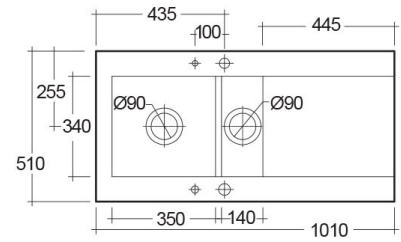


# RAK-DREAM 1 - MATT GREY - 503

Drop In | Kitchen Sink

**RAK**  
CERAMICS



## TECHNICAL SPECIFICATIONS

Suite: RAK-KITCHEN SINKS

Dimensions: 1010 x 510 mm

Weight: 30 Kg

Color: Blue

Vanity space: yes

Code	Name
OC200LHSL503A	DREAM KITCHEN SINK 1 - MATT GREY - 503 - Left Hand Side Drain Board
OC200RHSL503A	DREAM KITCHEN SINK 1 - MATT GREY - 503 - Right Hand Side Drain Board
OC200NTSL503A	DREAM KITCHEN SINK 1 - MATT GREY - 503 - No Tap Hole

Dimensions: All dimensions in mm. Tolerance of vitreous china & fireclay items:  $\pm 5\%$  for below 200mm and  $\pm 3\%$  for above 200mm; for all other items tolerance  $\pm 1\%$ . Note: Due to a continuing development program to improve design and performance, the manufacturer reserves all rights to vary specifications without prior information. Please note accessories are for photographic use only.