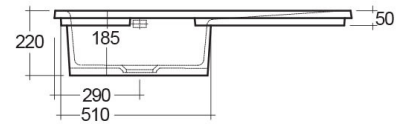
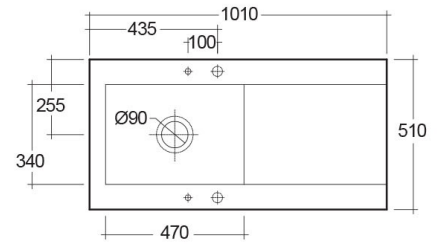


RAK-DREAM 2 - MATT GREY - 503

Drop In | Kitchen Sink

RAK
CERAMICS



TECHNICAL SPECIFICATIONS

Suite: RAK-KITCHEN SINKS

Dimensions: 1010 x 510 mm

Weight: 30 Kg

Color: MATT GREY - 503

Vanity space: yes

Code	Name
OC201LHSL503A	DREAM KITCHEN SINK 2 - MATT GREY - 503 - Left Hand Side Drain Board
OC201RHSL503A	DREAM KITCHEN SINK 2 - MATT GREY - 503 - Right Hand Side Drain Board
OC201INTSL503A	DREAM KITCHEN SINK 2 - MATT GREY - 503 - No Tap Hole

Dimensions: All dimensions in mm. Tolerance of vitreous china & fireclay items: $\pm 5\%$ for below 200mm and $\pm 3\%$ for above 200mm; for all other items tolerance $\pm 1\%$. Note: Due to a continuing development program to improve design and performance, the manufacturer reserves all rights to vary specifications without prior information. Please note accessories are for photographic use only.