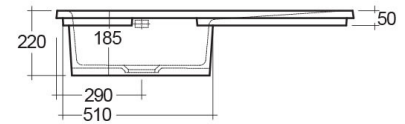
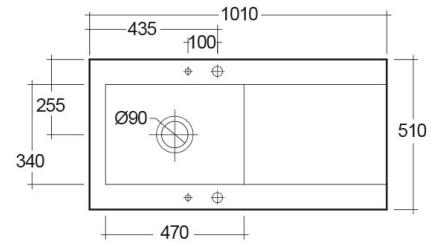


# RAK-DREAM 2 - MATT WHITE - 500

Drop In | Kitchen Sink

**RAK**  
CERAMICS



## TECHNICAL SPECIFICATIONS

|               |                   |
|---------------|-------------------|
| Suite:        | RAK-KITCHEN SINKS |
| Dimensions:   | 1010 x 510 mm     |
| Weight:       | 30 Kg             |
| Color:        | MATT WHITE - 500  |
| Vanity space: | yes               |

| Code           | Name   |
|----------------|--|
| OC201LHSL500A  | DREAM KITCHEN SINK 2 - MATT WHITE - 500<br>- Left Hand Side Drain Board  |
| OC201RHSL500A  | DREAM KITCHEN SINK 2 - MATT WHITE - 500<br>- Right Hand Side Drain Board |
| OC201INTSL500A | DREAM KITCHEN SINK 2 - MATT WHITE - 500<br>- No Tap Hole                 |

Dimensions: All dimensions in mm. Tolerance of vitreous china & fireclay items:  $\pm 5\%$  for below 200mm and  $\pm 3\%$  for above 200mm; for all other items tolerance  $\pm 1\%$ . Note: Due to a continuing development program to improve design and performance, the manufacturer reserves all rights to vary specifications without prior information. Please note accessories are for photographic use only.