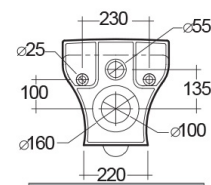
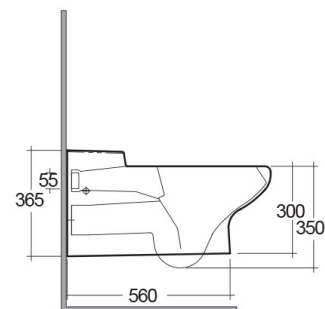
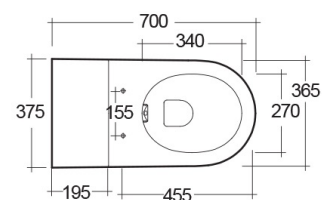


RAK-SPECIAL NEEDS

Wall Hung | Water Closet

RAK
CERAMICS



TECHNICAL SPECIFICATIONS

Suite:	RAK-SPECIAL NEEDS
Type:	Wall Hung
Dimensions:	700 x 365 mm
Weight:	30 Kg
Color:	Alpine White
Trap type:	P Trap
Trapway type:	Concealed
Seat cover options:	Urea
Bowl shape:	Oval
Soft close:	yes
Flush Type:	Dual Flush

Code	Name
CO23AWHA	COMPACT WATER CLOSET RIMLESS WALL HUNG 70CM
YFG085A	Urea Seat & Cover

Dimensions: All dimensions in mm. Tolerance of vitreous china & fireclay items: $\pm 5\%$ for below 200mm and $\pm 3\%$ for above 200mm; for all other items tolerance $\pm 1\%$. Note: Due to a continuing development program to improve design and performance, the manufacturer reserves all rights to vary specifications without prior information. Please note accessories are for photographic use only.

