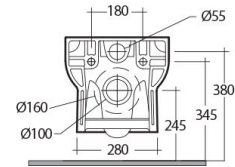
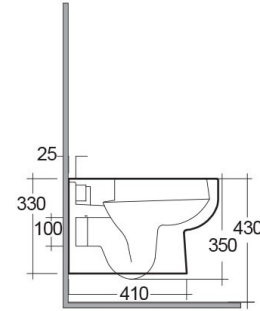
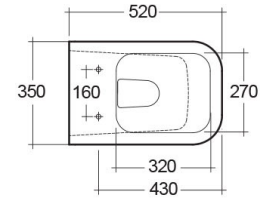


# RAK-SERIES 600 W/HIDDEN FIXATIONS

## Wall Hung | Water Closet

**RAK**  
CERAMICS



### TECHNICAL SPECIFICATIONS

Suite:	RAK-SERIES 600
Type:	Wall Hung
Dimensions:	520 x 350 mm
Weight:	25 Kg
Color:	Alpine White
Trap type:	P Trap
Trapway type:	Concealed
Seat cover options:	Urea
Bowl shape:	Rounded Rectangle
Soft close:	yes
Flush Type:	Dual Flush

Code	Name
SE13AWHA	SERIES 600 WATER CLOSET RIMLESS BACK TO WALL P-TRAP 52CM
YFG187B	RAK-Series 600 Urea Soft Close Seat Cover
YFG187	RAK-Series 600 Urea Seat Cover

Dimensions: All dimensions in mm. Tolerance of vitreous china & fireclay items:  $\pm 5\%$  for below 200mm and  $\pm 3\%$  for above 200mm; for all other items tolerance  $\pm 1\%$ . Note: Due to a continuing development program to improve design and performance, the manufacturer reserves all rights to vary specifications without prior information. Please note accessories are for photographic use only.