

Adjustable Hanging Toilet Bracket

Important remind:

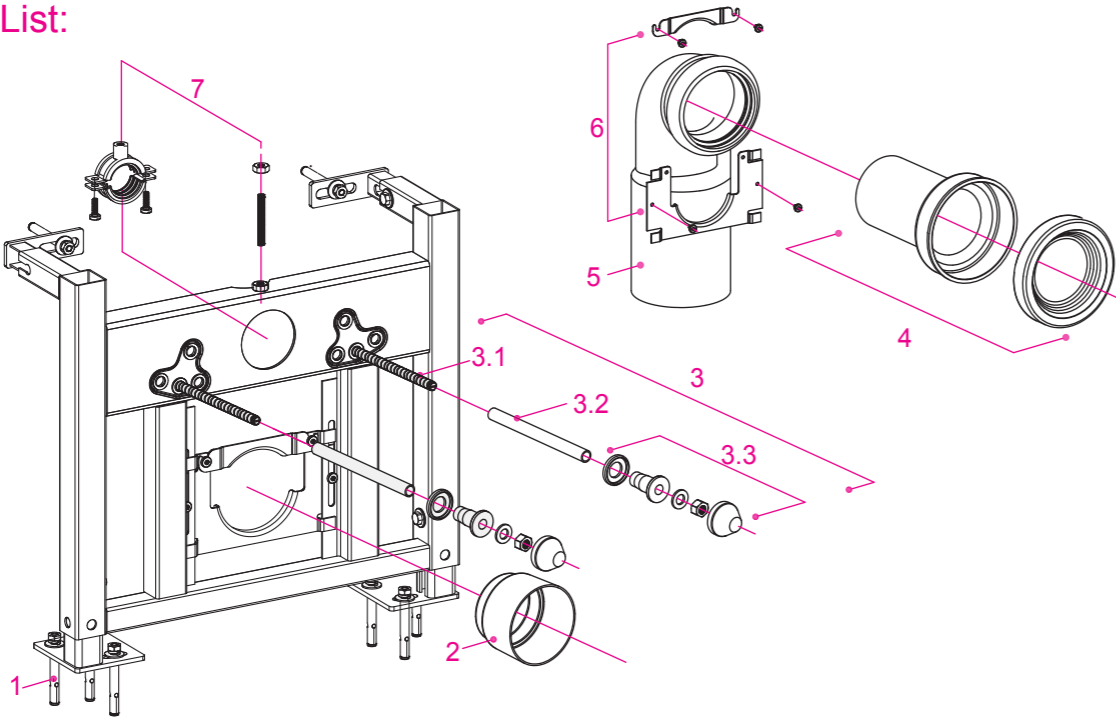
- 1. Please read through this Instructions carefully prior to installation, and this company shall not be responsible for any loss caused by installation not in conformity with this Instructions.
- 2. All data contained is based upon the last product Information available at the time of publication. we reserves the right to implement changes of product characteristics, packaging and availability at any time without further notice.
- 3. Please confirm the FFL according to the overall indoor fitment method. Line out the FFL on the wall and always regard FFL as datum line of 0 height.
- 4. This Toilet Bracket doesn't include tank, admitting pipe, flush pipe clincher and fixing accessory which should be supplied according to customer's special requirements.

Note:

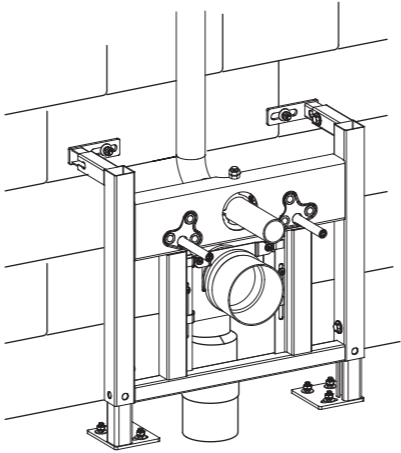
- 1. Please install the frame before paving the tiles. The dimensional unit is millimeter.
- 2. Please subject to the object as right if it is not in conformity with the components in picture.

! FFL 0 FFL of finish face, all dimension is millimeter

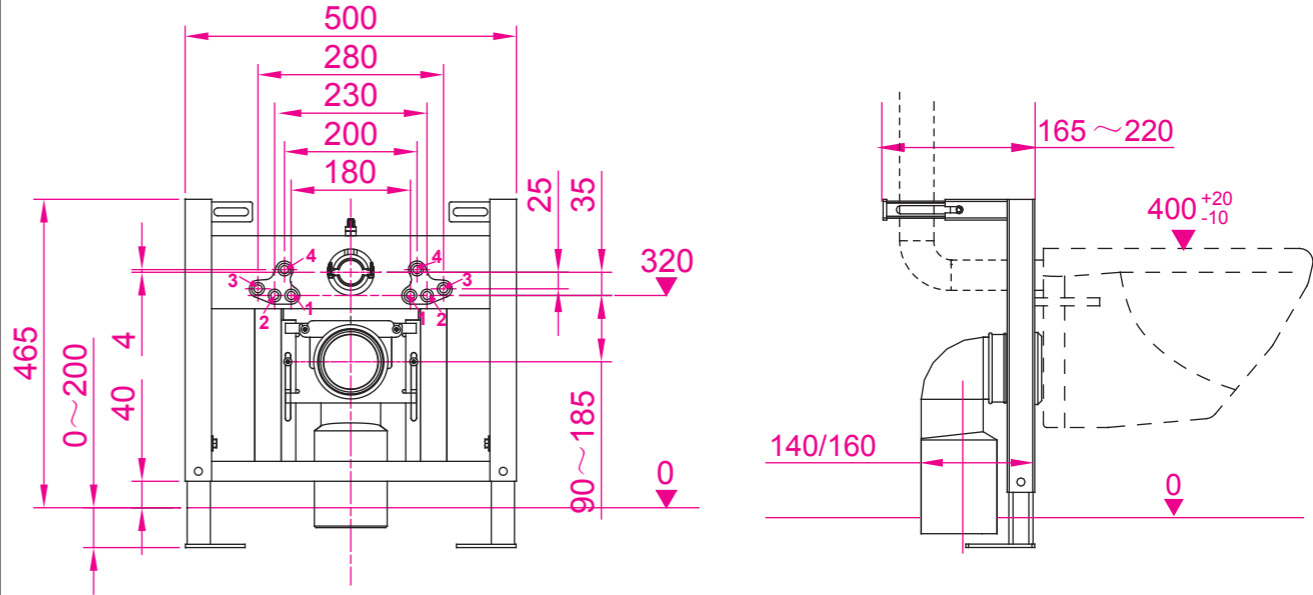
Accessories List:



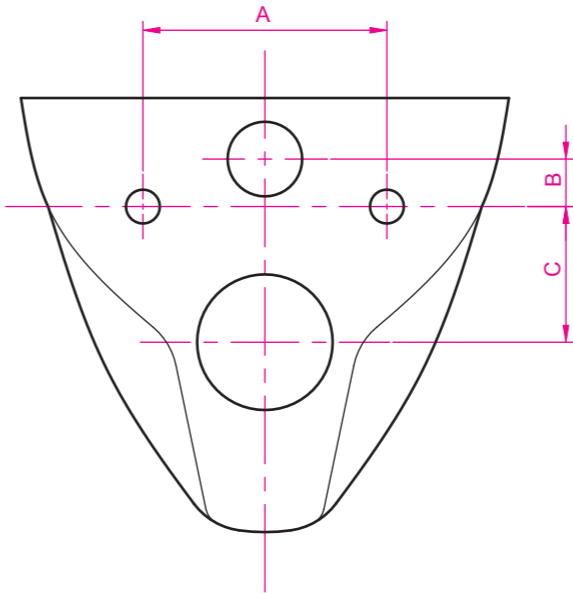
NO.	NAME	QTY	FUNCTION
1	Expansion bolt components	6	To fix frame
2	Plug	1	space reservation for flush straight pipe and water dischargedrain when building the wall
3.1	Long bolt	2	To fix toilet bowl
3.2	Transparent long bolt shield	2	To shield long bolt
3.3	Long bolt components	2	To fix toilet bowl
4	Drainage straight pipe components	1	To connect the bended pipes to toilet bowl
5	Drainage pipe	1	To drain
6	Clamp	1	To fix drainage pipe
7	Flush straight pipe components	1	To supply water to flush



1.Basic measurements



2.First preparation before install bracket:

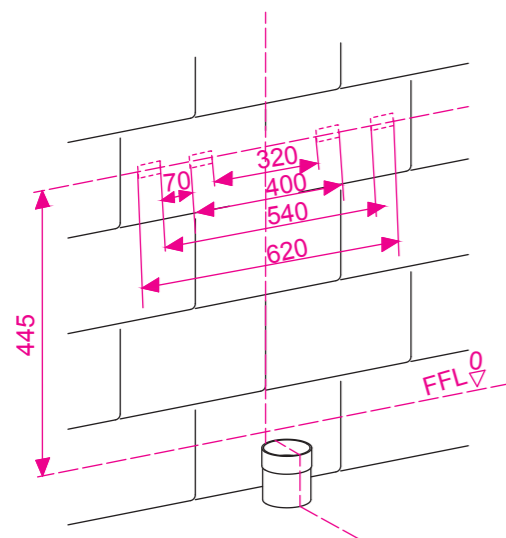


Suited toilet measurements:

Serial number	Measurement			Suited holes for long screw of bracket
	A	B	C	
1	180	25-45	90-185	1-1
2	230	25-45	90-185	2-2
3	280	15-35	100-195	3-3
4	200	-14-6	129-224	4-4

Please confirm A, B, C sizes of toilets used before installation.

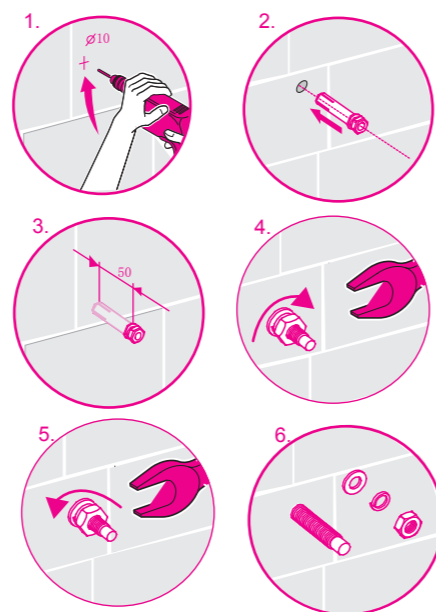
3. Drill on the installation wall and the ground



Step:

1. Draw the central line on the installation wall through center of floor outfall;
2. Draw horizontal line 445mm up the FFL line
3. As the drawing shows, draw four rectangles with the length of 40mm.
4. Drill 10X50 on the the installation wall, center of the hole should at the center line of the rectangles.
5. All side adjustable floor baseboard gliding pipe, as drawing 5 shows, fix on position of floor base board as needs.

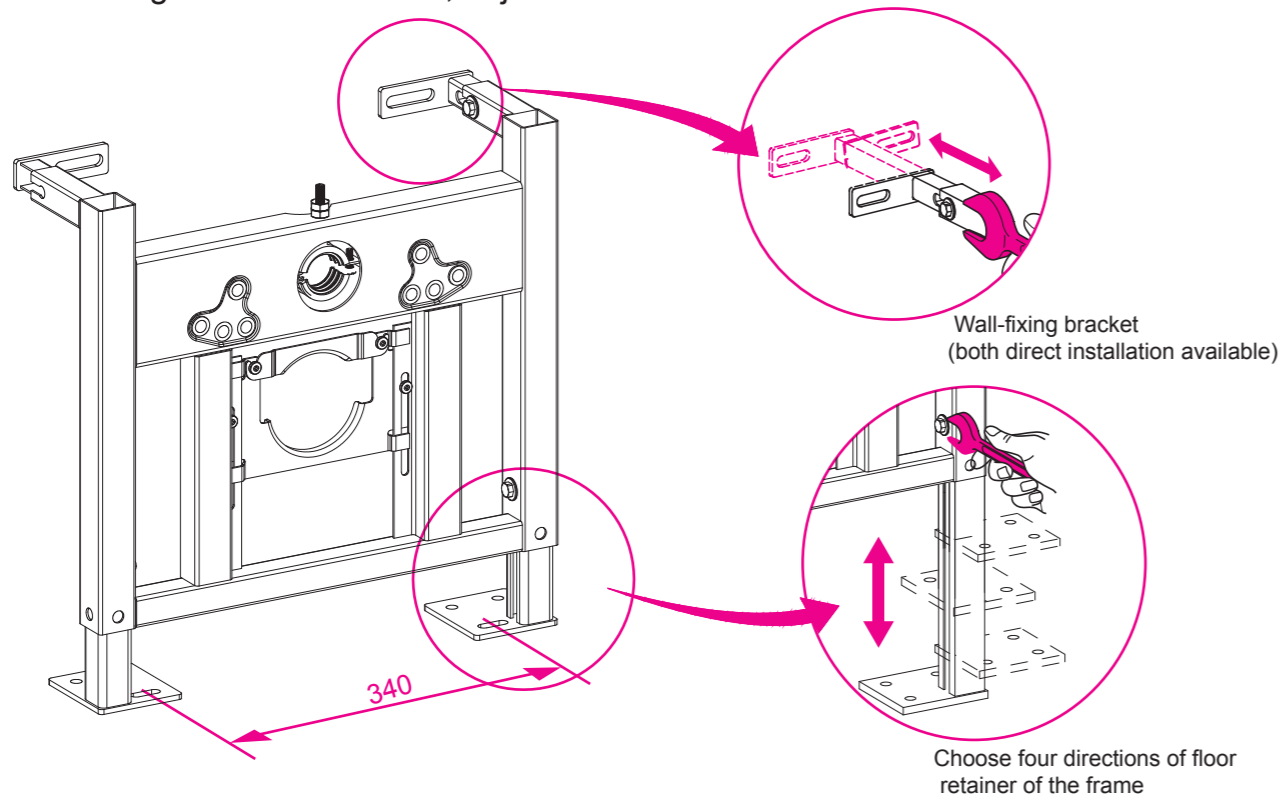
4. Install Expansion Bolts



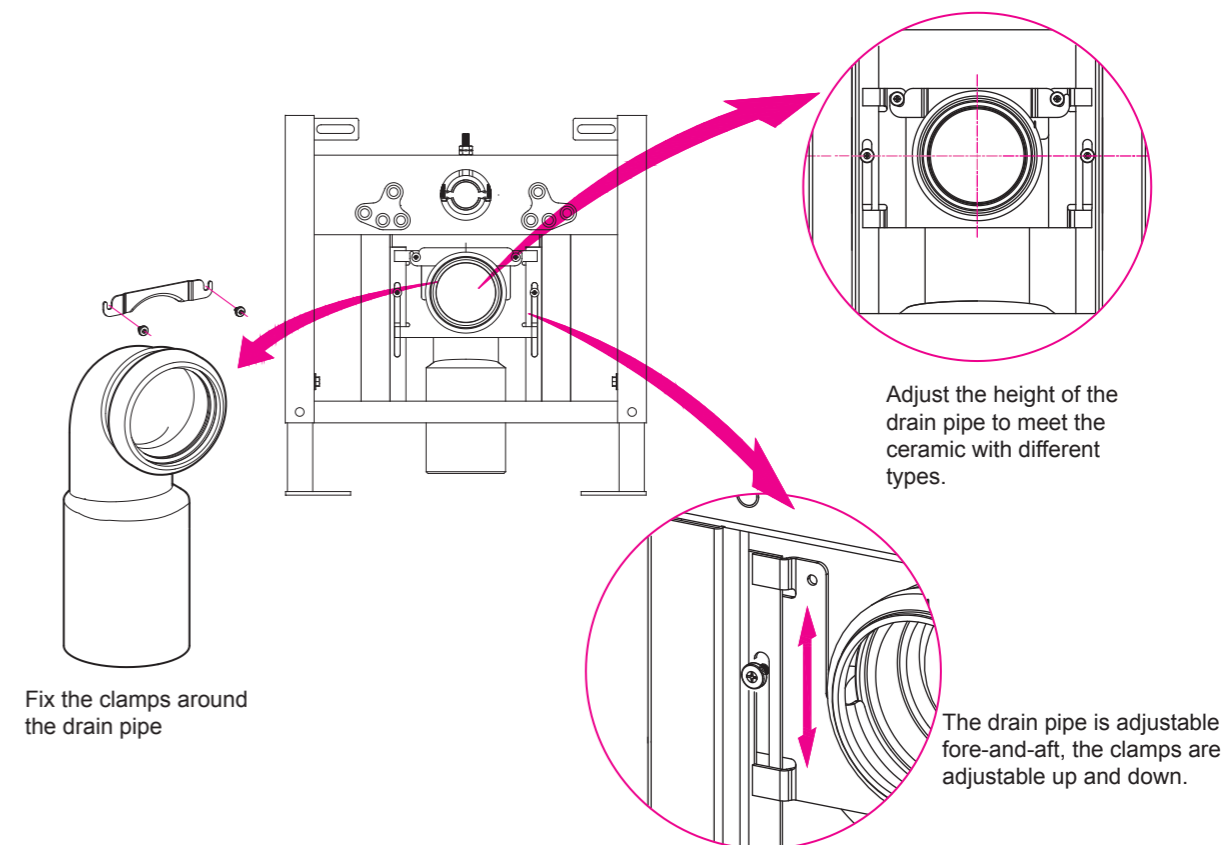
As shown on picture:

1. Drill $\varnothing 10 \times 50$
2. Insert expansion bolt
3. Tighten nut to strain bolt;
4. Unscrew nut;
5. Hold screw and washer for later use.

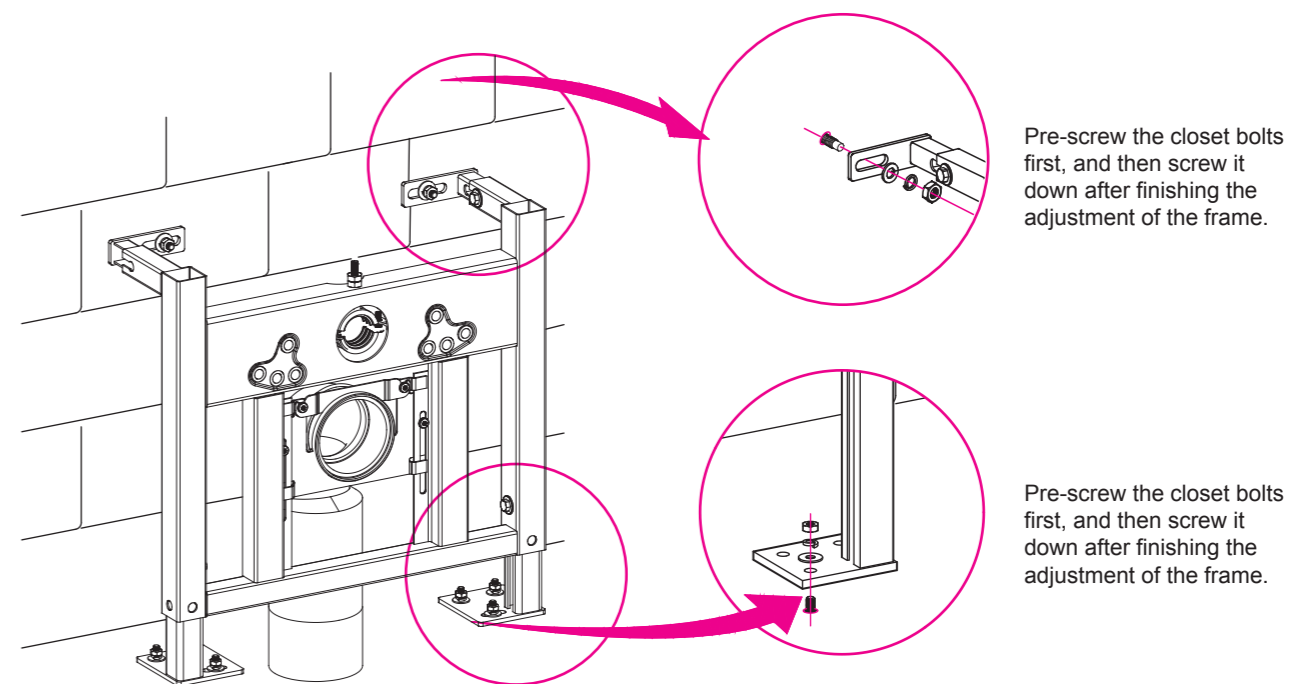
5. Assembling of wall baseboard, adjustment of floor baseboard



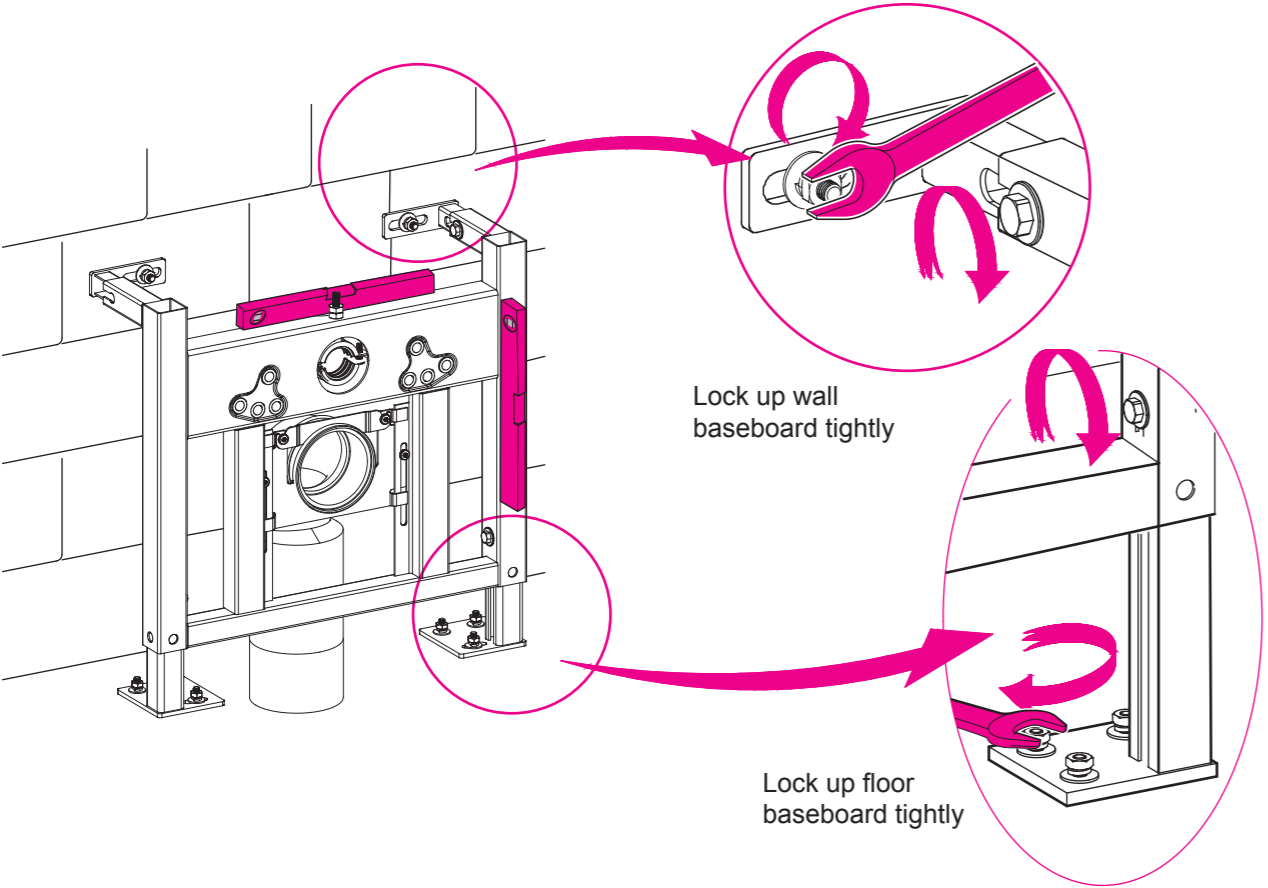
6. Drain pipe installation: install curved drainage to pipe clincher; no need to take out the below clincher.



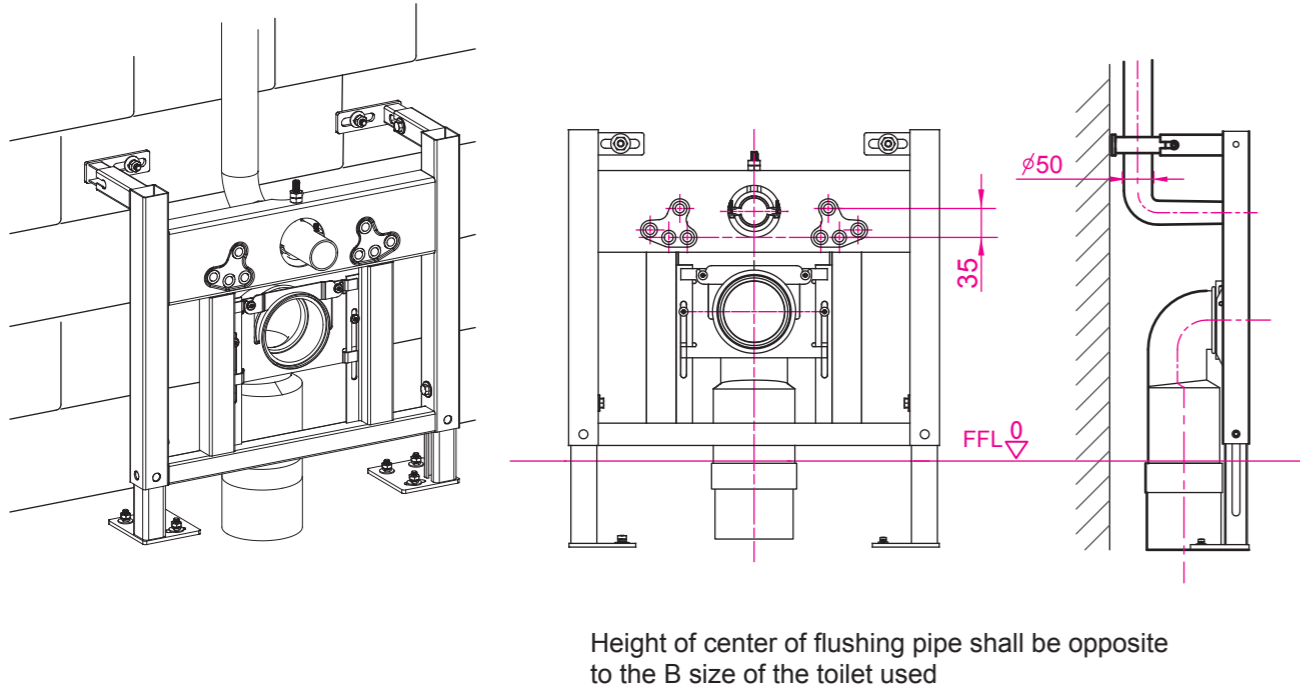
7. Install the drain pipe into the ground drain (Use PVC glue for anti-leaking); Pre-screw the exposure bolts of wall retainer and floor retainer of the frame



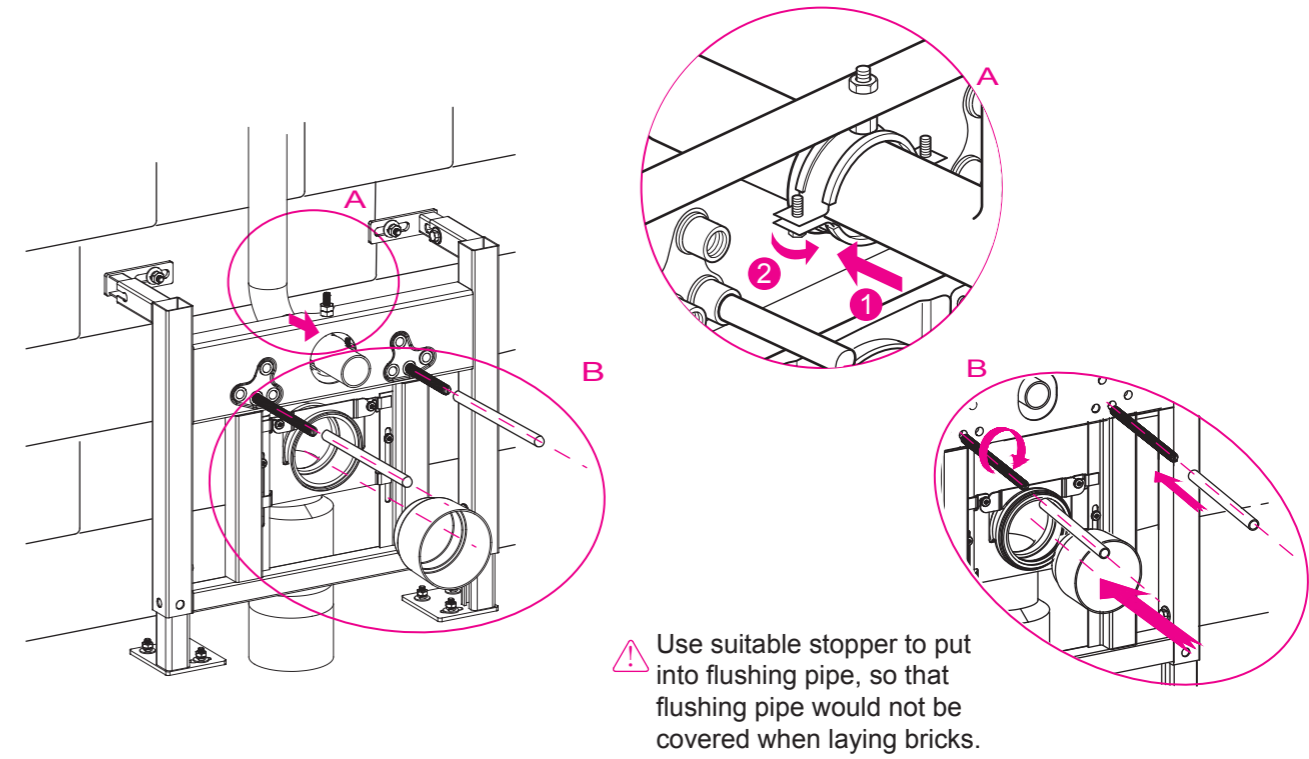
8.Adjust vertical and horizontal of the bracket



9.Installation of flushing pipe

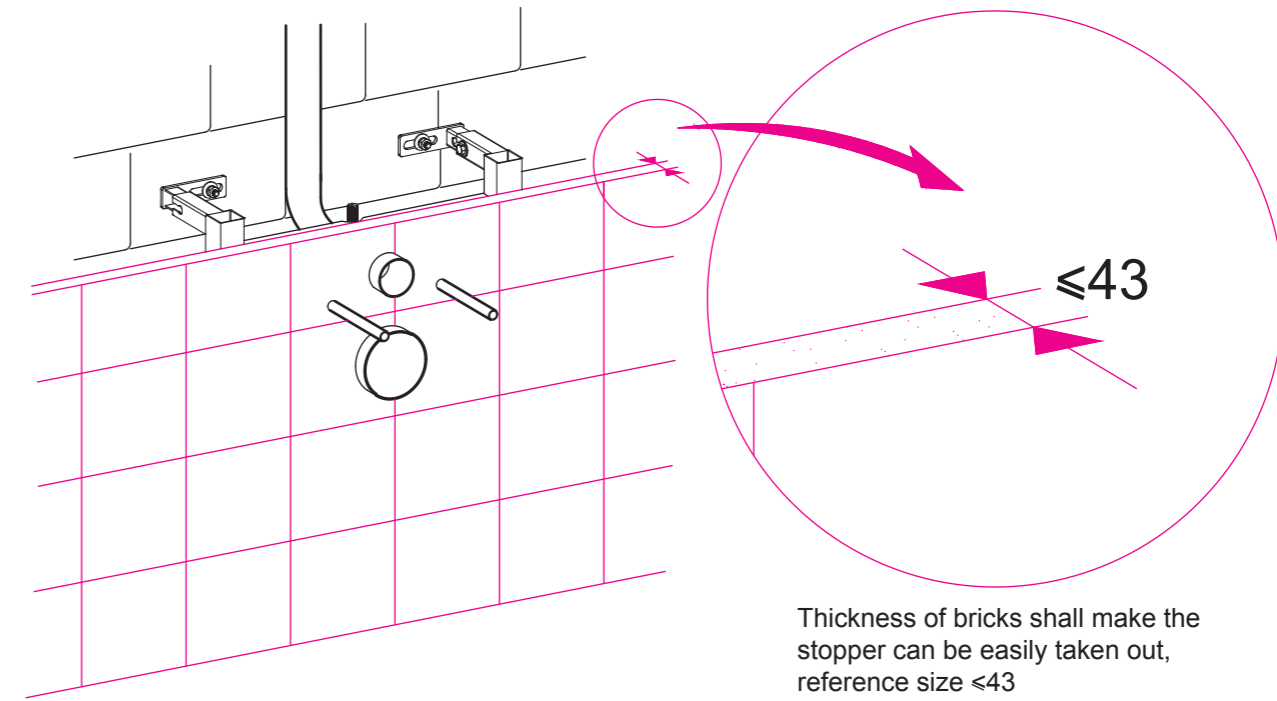


10.Install flushing pipe clip; As need, choose right holes to plug long screw and put the screw cap; Put the stopper into the curved drainpipe.



The clip we supplied is fit for flow pipe of outer diameter 50mm

11.Laying bricks



Thickness of bricks shall make the stopper can be easily taken out, reference size ≤43