

AQUAQUAD DUAL LEVER TAP BRUSHED BRASS

TAQ2BB/



WRAS Approved

RANGEMASTER

SINKS & TAPS

| | |
|---|-------------------------------|
| Overall Height (mm) | 310 |
| Spout Reach (mm) | 192 |
| Spout Height (mm) | 237 |
| Spout Rotation Range | 360° |
| Handle Type | Dual Lever |
| Colour | Brushed Brass |
| Bar Pressure Suitability | |
| Min. Bar Pressure | 0.4 |
| Max. Bar Pressure | 5.5 |
| Mixed Flow Rate at 3 Bar Pressure (l/min) | 14.36 |
| Flow Type | Single Flow |
| Recommended Hot Water Temperature | 46°C |
| Maximum Hot Water Temperature | 70°C |
| Handle Control | Quarter Turn |
| Centre Distance (mm) | - |
| Cartridge Type | Ceramic Disc Cartridge |
| Aerator Type | Honeycomb Aerator |
| Inlet Pipes | 1/2" Stainless Flexible Hoses |
| Anti-Splash Spout | Yes |
| Pull Out Spray | No |
| WRAS Approved | Yes |
| Product Code | TAQ2BB/ |
| Barcode | 5015834051369 |

AGA Rangemaster continuously seeks improvements in specification, design and production of products and thus, alterations take place periodically. Whilst every effort is made to produce up to date resources, the information included here is intended as a guide. Always refer to the installation instructions when fitting, installation work should be completed by a professional tradesman.

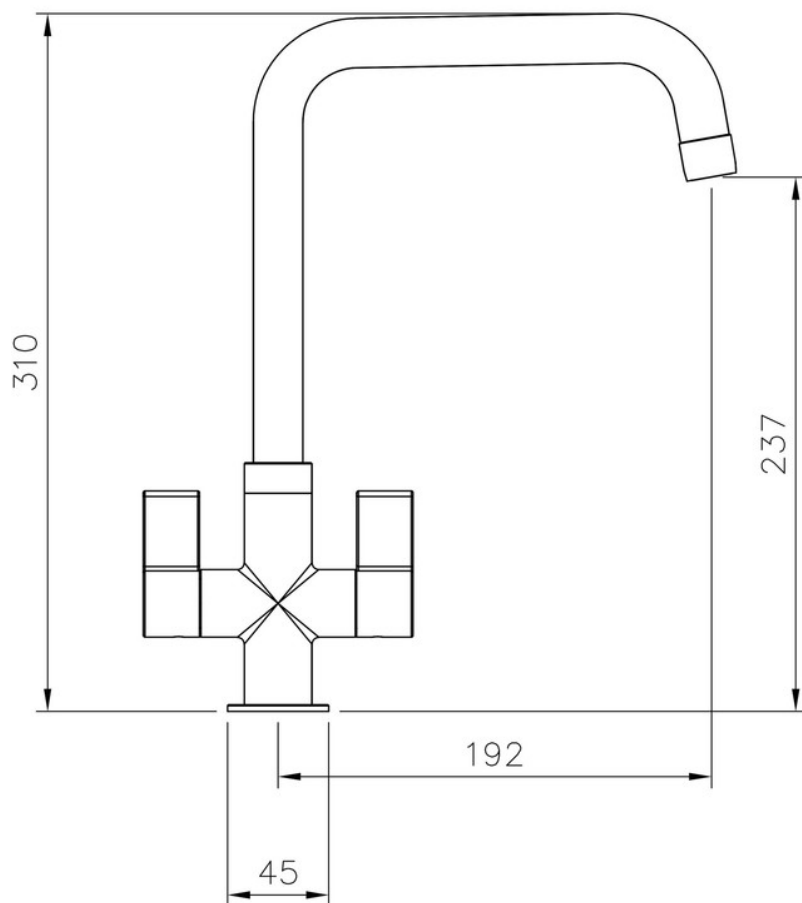
AQUAQUAD DUAL LEVER TAP BRUSHED BRASS

TAQ2BB/

RANGEMASTER

SINKS & TAPS

Technical Drawing



Date of download: July 23, 2025

AGA Rangemaster continuously seeks improvements in specification, design and production of products and thus, alterations take place periodically. Whilst every effort is made to produce up to date resources, the information included here is intended as a guide. Always refer to the installation instructions when fitting, installation work should be completed by a professional tradesman.