

ORIDIAN UNDERMOUNT IGNEOUS GRANITE SINK

ORIUN7602CO/



Size: 760 x 435 mm

Create a modern finished look with the addition of an Oridian granite bowl. The Oridian collection features large bowls offering ample space to wash large pots and pans, available in separate inset and undermount collections.

- Igneous granite material, 80% quartz & 20% acrylic
- Large bowls
- Separate inset and undermount collections
- Waste kit included

RANGEMASTER

SINKS & TAPS

Material	Igneous Granite
Material Gauge	-
Material Finish Bowl	-
Material Finish Drainer	-
Drainer Position	
Overall Length (mm)	760
Overall Width (mm)	435
Main Bowl Length (mm)	343
Main Bowl Width (mm)	395
Main Bowl Depth (mm)	220
Second Bowl Length (mm)	343
Second Bowl Width (mm)	395
Second Bowl Depth (mm)	220
Tap hole Size (mm)	1 x 35
Waste Size (mm)	1 x 90
Waste Kit	Included with sink (2 x 89mm BSW & overflow kit)
Min. Base Unit (mm)	800
Cutout Size Length (mm)	720
Cutout Size Width (mm)	400
Warranty Sinks (years)	20
Product Code	ORIUN7602CO/
Barcode	5015834056890

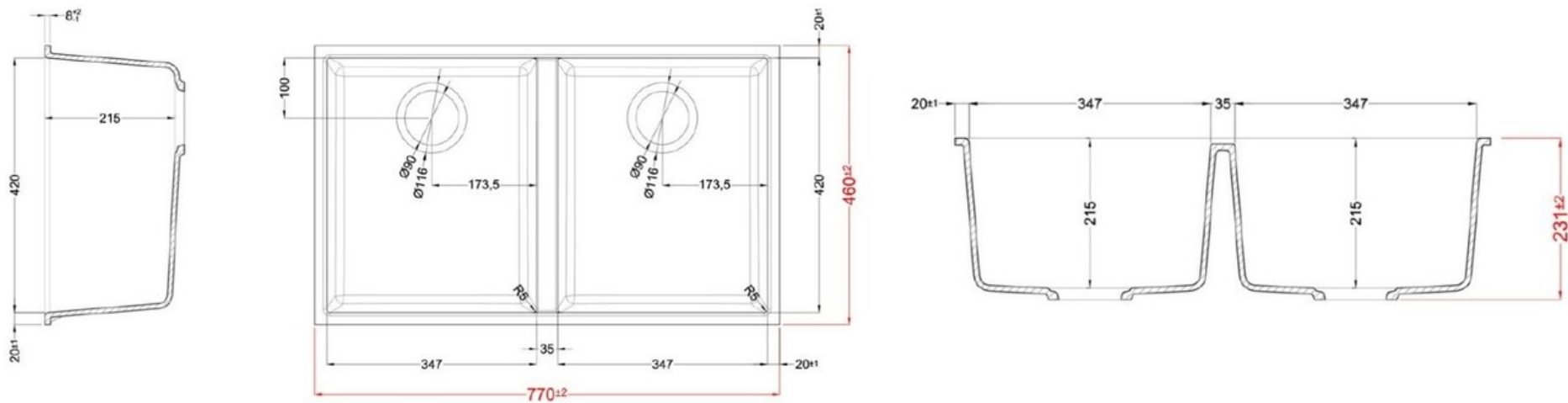
Date of download: July 23, 2025

AGA Rangemaster continuously seeks improvements in specification, design and production of products and thus, alterations take place periodically. Whilst every effort is made to produce up-to date resources, the information included here is intended as a guide. Always refer to the product's installation instructions when fitting, installation work should be completed a professional tradesman.

ORIDIAN UNDERMOUNT IGNEOUS GRANITE SINK

ORIUN7602CO/

Technical Drawing



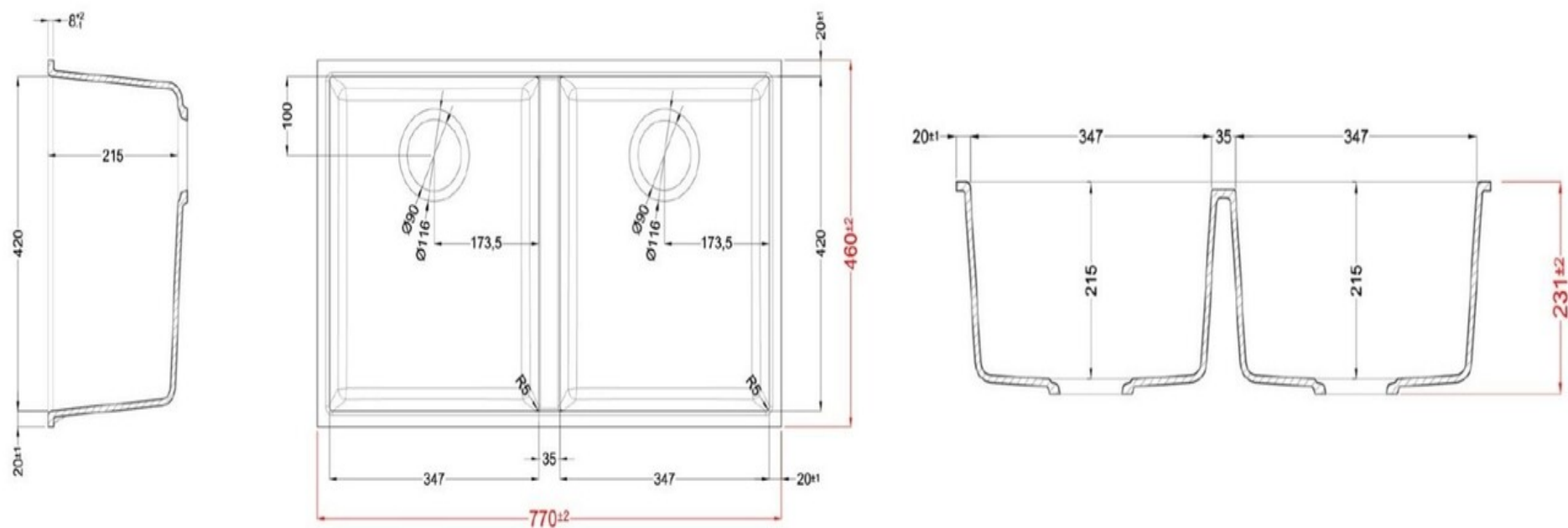
AGA Rangemaster continuously seeks improvements in specification, design and production of products and thus, alterations take place periodically. Whilst every effort is made to produce up-to date resources, the information included here is intended as a guide. Always refer to the product's installation instructions when fitting, installation work should be completed a professional tradesman.

ORIDIAN UNDERMOUNT IGNEOUS GRANITE SINK

ORIUN7602CO/

Cut Out Template

Dimensions in mm. Not to scale.



AGA Rangemaster continuously seeks improvements in specification, design and production of products and thus, alterations take place periodically. Whilst every effort is made to produce up-to date resources, the information included here is intended as a guide. Always refer to the product's installation instructions when fitting, installation work should be completed a professional tradesman.