

AQUAQUAD DUAL LEVER TAP CHROME

TAQ2CM/



Modern in design with a quad style neck and tabbed handles, the Aquaquad is available with dual lever controls and in four on-trend finishes.

- Suitable for all pressure water systems
- Featuring an anti-splash spout with honeycomb aerator design which mixes air with water to emit a water flow with no splash

RANGEmaster
sinks & taps

| | |
|---|-------------------------------|
| Overall Height (mm) | 310 |
| Spout Reach (mm) | 192 |
| Spout Height (mm) | 237 |
| Spout Rotation Range | 360° |
| Handle Type | Dual Lever |
| Colour | Chrome |
| Bar Pressure Suitability | |
| Min. Bar Pressure | 0.4 |
| Max. Bar Pressure | 5.5 |
| Mixed Flow Rate at 3 Bar Pressure (l/min) | 14.36 |
| Flow Type | Single Flow |
| Recommended Hot Water Temperature | 46°C |
| Maximum Hot Water Temperature | 70°C |
| Handle Control | Quarter Turn |
| Centre Distance (mm) | - |
| Cartridge Type | Ceramic Disc Cartridge |
| Aerator Type | Honeycomb Aerator |
| Inlet Pipes | 1/2" Stainless Flexible Hoses |
| Anti-Splash Spout | Yes |
| Pull Out Spray | No |
| WRAS Approved | Yes |
| Product Code | TAQ2CM/ |
| Barcode | 5015834051345 |

Date of download: July 18, 2023

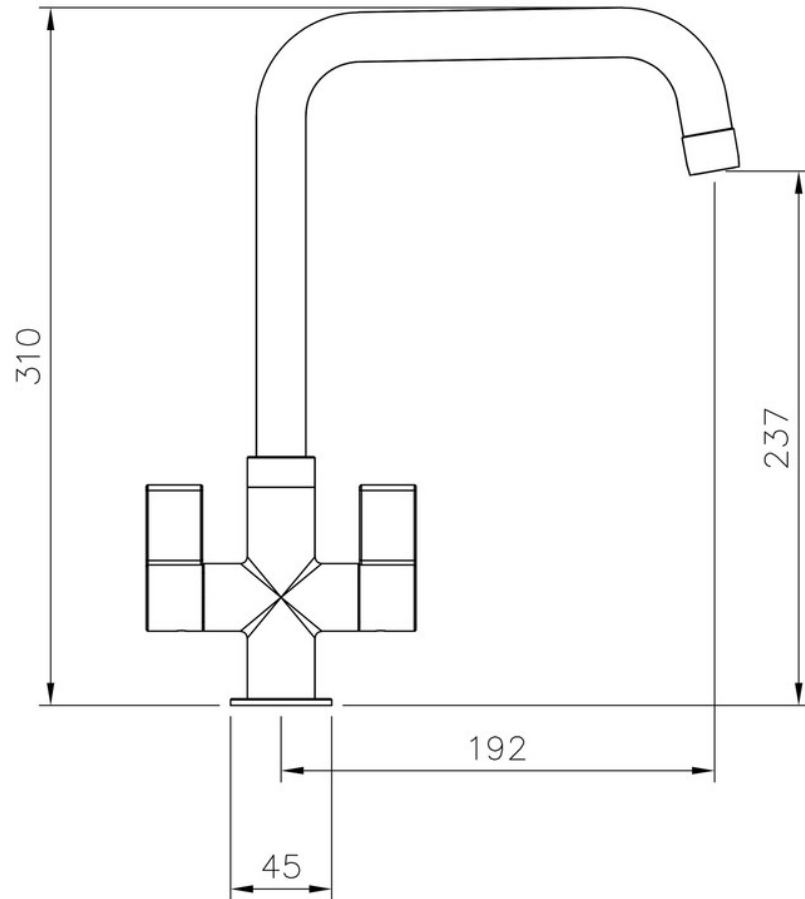
AGA Rangemaster continuously seeks improvements in specification, design and production of products and thus, alterations take place periodically. Whilst every effort is made to produce up to date resources, the information included here is intended as a guide. Always refer to the installation instructions when fitting, installation work should be completed by a professional tradesman.

AQUAQUAD DUAL LEVER TAP CHROME

TAQ2CM/

RANGEmaster
sinks & taps

Technical Drawing



Date of download: July 18, 2023

AGA Rangemaster continuously seeks improvements in specification, design and production of products and thus, alterations take place periodically. Whilst every effort is made to produce up to date resources, the information included here is intended as a guide. Always refer to the installation instructions when fitting, installation work should be completed by a professional tradesman.