



# AmberMat

## Installation Manual





# Thank you for investing in our Amber underfloor heating system

In this instruction manual you will find important information regarding the installation of your underfloor heating system. Please follow the step by step instructions, ensuring complete care is taken. Check with the floor manufacturer if you have any doubt about the suitability of laying our heating mat/s under your floor covering.

All our underfloor heating mats come with a 12 year warranty. Please register your product within 30 days from completion of installation, using our warranty registration form, which can be found at [www.amberufh.co.uk](http://www.amberufh.co.uk).

This warranty is only valid if installed by an IET 17th Edition qualified electrician/ electrical contractor. The installation must conform to Part P of the Building Regulations 2005. For full terms and conditions relating to our warranty please visit our website [www.amberufh.co.uk](http://www.amberufh.co.uk)

**Please note:** The warranty does not extend to costs of relaying, replacing or repairing any floor covering or floor. The warranty is not valid if faults are caused by damage, incorrect installation or mis-use.



4	DO's and DONT's
5	Floor Coverings
6-8	Step-by-Step Installation Guide
9	Resistance Values
10	Floor Plan
11	Floor Build-ups

Unit 4, Brickfields Business Park  
Old Stowmarket Road  
Woolpit Suffolk IP30 9QS

Phone: 0800 056 0494

Fax: 0800 652 4165

For technical support: [technical@amberufh.co.uk](mailto:technical@amberufh.co.uk)

Website: [www.amberufh.co.uk](http://www.amberufh.co.uk)

## DO's

- ✓ **DO** read through the instructions carefully before beginning work
- ✓ **DO** ensure your floor base has no sharp debris or objects such as nail heads protruding before beginning your installation
- ✓ **DO** cover both heating cable and connection joint under the flooring.
- ✓ **DO** check the AmberMat will fit into the free floor area of the room, prior to unpacking
- ✓ **DO** test the cable before installing, and then before and after covering AmberMat
- ✓ **DO** ensure the AmberMat is encapsulated in flexible tile adhesive / flexible levelling compound, prior to your floor finish being laid
- ✓ **DO** be careful not to damage the cable at any stage during the installation
- ✓ **DO** check the heat loss if this is to be the sole heat source
- ✓ **DO** ensure the system is controlled by a thermostat with a floor sensor
- ✓ **DO** consider additionally insulating your sub-floor before installing the underfloor heating system
- ✓ **DO** ensure the system is protected by a suitable dedicated RCD (30mA)

## DONT's

- ✗ **DON'T** install the mat across two or more rooms
- ✗ **DON'T** place the cable under any fixed furniture such as kitchen units, baths or showers
- ✗ **DON'T** touch or cross the heating cables
- ✗ **DON'T** cut the yellow heating cable
- ✗ **DON'T** lay the system so that any cables are closer than 3cm to each other
- ✗ **DON'T** install the floor temperature sensor close to other heat sources such as hot water pipes
- ✗ **DON'T** turn on the heating mat while it is rolled up
- ✗ **DON'T** install the system if the ambient temperature is below 5°C as the cables can become less flexible
- ✗ **DON'T** bend the joint between the heating cable and the black cold tail



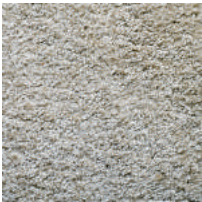
# Floor Finishes & Coverings

The underfloor heating system is compatible with the following most common floor finishes, such as:



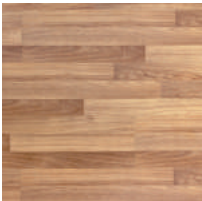
## Tile / Stone

Fully encapsulate the AmberMat within either a flexible smoothing compound or flexible tile adhesive, prior to the tile / floor finish being laid. Amber recommends the use of a plastic trowel when laying tile adhesive, to protect the underfloor heating cable from accidental damage.



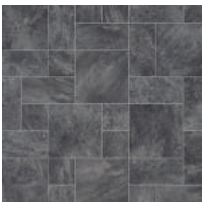
## Carpet

Fully encapsulate the AmberMat within a 10mm bed of flexible smoothing compound, to provide a minimum of 5mm above the top of the heating element., prior to the carpet floor finish being laid. Avoid rubber or foam backed carpets. Please check with the carpet manufacturer to ensure the carpet is suitable for underfloor heating.



## Timber

Fully encapsulate the AmberMat within a nominal 10mm bed of flexible smoothing compound layer, prior to the timber floor finish being laid. When installing natural wood floors it is recommended that soft wood floors should not exceed 20mm in thickness, hard wood floors should not exceed 30mm in thickness.



## Vinyl

Fully encapsulate the AmberMat within a 10mm bed of flexible smoothing compound, to provide minimum of 5mm coverage above the top of the heating element, prior to the vinyl floor finish being laid.

\*Floor coverings should not exceed  $0.15 \text{ m}^2\text{K}/\text{W}$  (1.5 tog)

Please note that thermally resistive items should not be left or installed onto underfloor heating in a way where heat can become trapped. This trapped heat could cause failure if left without due care or attention.

Possible examples of thermally resistive items could be heavy rugs, bean bags or a mattress laid in direct contact with the floor. Some items of furniture that do not allow air flow could also cause concern. **If you are unsure please contact Amber.**

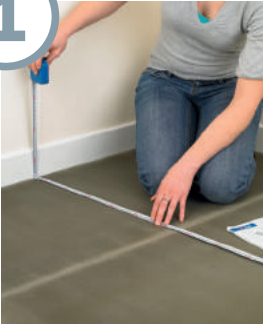
# Installing the **AmberMat**

## Step-by-step guide

Tools Required:



1



### Let's get started

**A. Plan:** Use your plan to calculate the heated area, working out how to lay the mat evenly across the floor whilst avoiding all floor obstructions and close floor fitting objects (pipes, baths, cupboards). Detail on your plan the location of the cold tail (where the mat starts), floor sensor and connection box. It is acceptable to lay the AmberMat under suspended cupboards, wash basins and wall mounted toilet pans.

**B. Once the floor is prepared:** Mark the positions of the floor fitting objects that will be installed once the floor is finished, so these can be avoided when laying the mat.

2



### Testing your AmberMat

At each stage of the installation it is recommended that you test your AmberMat for the following:

**CONTINUITY** - This checks that the heating cable (blue and black wires) are intact and have the correct resistance. Checked with a multimeter, the resistance reading should match the rating on the cold tail label with a tolerance of -5 to +10%. Ensure your multimeter is capable of reading values between 28-800 ohms.

**INSULATION** - This checks that the earth screen around the heating cable has not been damaged and shorted to the heating cables. The test can be made with a multimeter and can be done by testing both the path between the blue cable and the earth screen, and also the black cable and the earth screen - both should read infinity.

3



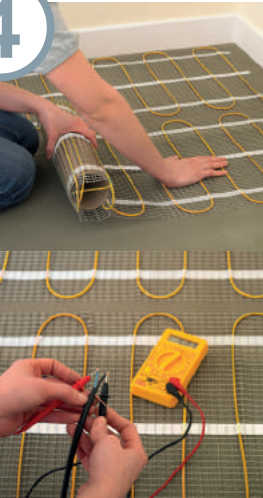
### Preparation

The subfloor must be prepared as normally required for tiling, ensure the installation surface is even, stable, dry, clean and free of sharp objects. When installing onto existing floorboards, it will be necessary to brace the floor with WBP plywood of standard recommended thickness or tile backer boards.

Each mat is supplied with a piece of flexible tubing (only one tube is required for each thermostat), this is to house the floor sensor, so that in the unlikely event that the sensor fails, it can be easily removed and replaced without lifting the floor. The sensor should be laid between two cable loops 15-20cm into the floor, avoiding any heat sources.

In some situations a small channel may have to be made in the floor to accommodate the tubing. If so, cut a channel from the thermostat position approximately 20-30cm across the floor.

4



### Fitting the mat

Remove the plastic outer and place the cold tail of the mat at the connection point. The AmberMat has a self-adhesive backing, lay this towards the floor and roll the mat out, referring to your layout plan. Upon reaching the end of the run, simply cut the grey mesh (NOT THE YELLOW CABLE) and turn the mat, positioning the next piece beside the first.

When cutting and turning the mat ensure there is a minimum 50mm gap between the cable loops. To avoid risk of damage at a later stage do not lay the mat where objects will be put onto or fixed to the floor.

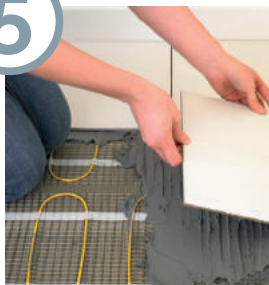
After fitting, measure the resistance value of the mat again. Use the same procedure as in step 2 - then make a note of the values on the commissioning certificate.

**Note: If required, the cable can be removed from the mesh and loops formed manually, but ensure the cables are spaced at 75mm (the same distance as those on the mat).**

# Installing the **AmberMat**

## Step-by-step guide continued

5



### Fitting/Final Measurement

The mat can now be covered in one of two methods:

#### **CONCRETE AND WOODEN FLOORS USING FLEXIBLE TILE ADHESIVES**

Working with a width of AmberMat at a time, apply flexible tile adhesive through the mat with a rubber back trowel or similar so that the heating cable is covered, making sure there are no air pockets. Another layer of adhesive can then be applied carefully using a suitable notched trowel to comb the adhesive before applying the tiles.

#### **CONCRETE AND WOODEN FLOORS USING SELF-LEVELLING COMPOUNDS**

An alternative method is to cover the AmberMat with a suitable self levelling/latex type compound. This product will find its own level giving you a level surface to then apply a layer of flexible tile adhesive using a suitable notched trowel to comb the adhesive before applying the tiles.

**Please note: Other floor finishes can be applied, please see page 5 for more details.**

After covering the mat, measure the resistance value of the mat again. Use the same procedure as in step 2 – then make a note of the values on the commissioning certificate.

**For professional guidance refer to your adhesive manufacturers recommendations.**

6



### Finishing

After the work has been completed the floor must dry completely before the floor heating and thermostat are connected.

This process usually takes 8-10 days, but you should refer to the adhesive and floor finish manufacturers guidelines. To connect the thermostat, please refer to the installation guidelines supplied with the thermostat.





# Resistance Values

## AmberMat 100W/m<sup>2</sup>

Product Code	Mat Area (m <sup>2</sup> )	Output Wattage	Resistance (Ohms)
A100010	1.0	100	529
A100015	1.5	150	353
A100020	2.0	200	265
A100025	2.5	250	212
A100030	3.0	300	176
A100035	3.5	350	151
A100040	4.0	400	132
A100050	5.0	500	106
A100060	6.0	600	88.2
A100070	7.0	700	75.6
A100080	8.0	800	66.1
A100090	9.0	900	58.8
A100100	10.0	1000	52.9
A100120	12.0	1200	44.1

## AmberMat 150W/m<sup>2</sup>

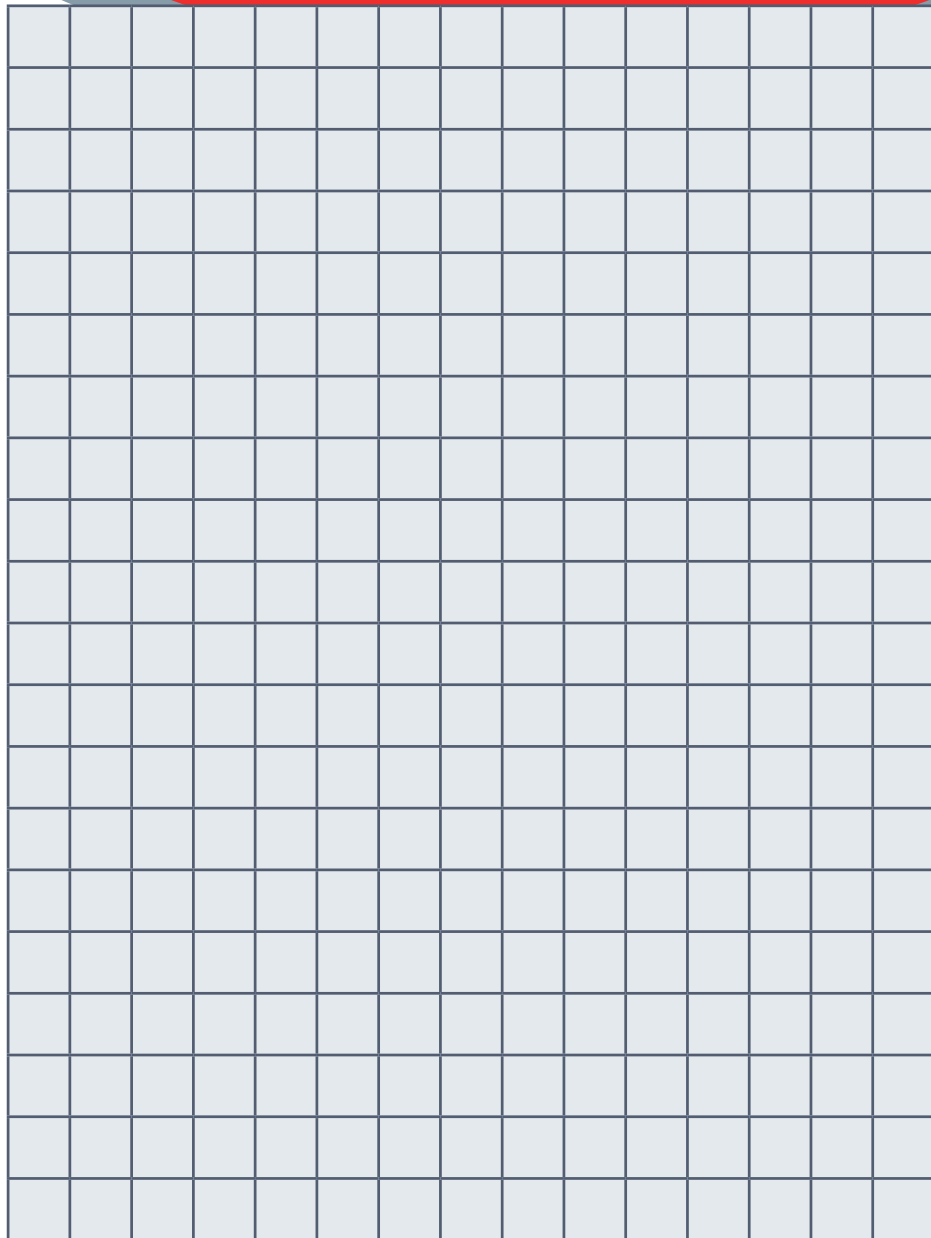
Product Code	Mat Area (m <sup>2</sup> )	Output Wattage	Resistance (Ohms)
A150005	0.5	75	705
A150010	1.0	150	353
A150015	1.5	225	235
A150020	2.0	300	176
A150025	2.5	375	141
A150030	3.0	450	118
A150035	3.5	525	101
A150040	4.0	600	88.2
A150050	5.0	750	70.5
A150060	6.0	900	58.8
A150070	7.0	1025	50.4
A150080	8.0	1200	44.1
A150090	9.0	1350	39.2
A150100	10.0	1500	35.3
A150120	12.0	1800	29.4

Please sketch your floor plan of the room and show the following:

Layout of the mats/cables, indicating your heated area

Placement of junction boxes

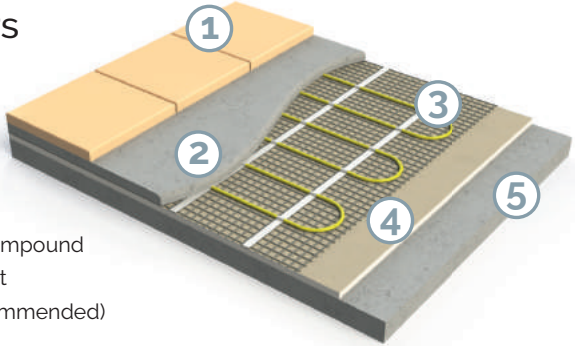
Placement of floor sensor and thermostat





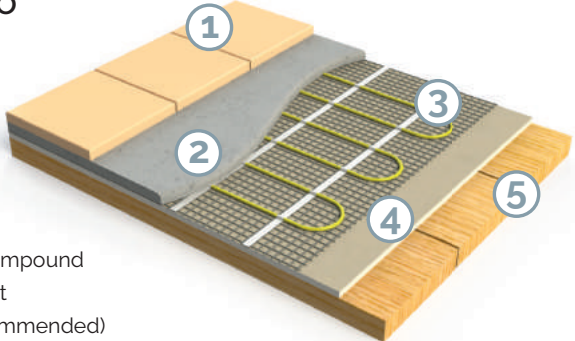
# AmberMat Installation Build-Up

## AmberMat onto Concrete Floors



- 1 – Floor Finish
- 2 – Adhesive/Levelling Compound
- 3 – Underfloor Heating Mat
- 4 – Tilebacker Board (recommended)
- 5 – Concrete Sub-Floor

## AmberMat onto Timber Floors



- 1 – Floor Finish
- 2 – Adhesive/Levelling Compound
- 3 – Underfloor Heating Mat
- 4 – Tilebacker Board (recommended)
- 5 – Timber Sub-Floor

For optimum performance, Amber always recommends the use of suitable insulation, helping to increase the performance of the heating system.



**Need technical help?**  
Call us on 0800 056 0494



Unit 4, Brickfields Business Park  
Old Stowmarket Road  
Woolpit Suffolk IP30 9QS

Phone: 0800 056 0494

Fax: 0800 652 4165

For technical support: [technical@amberufh.co.uk](mailto:technical@amberufh.co.uk)

Website: [www.amberufh.co.uk](http://www.amberufh.co.uk)