

COMMERCIAL PRODUCTS

2015



LAURA ACCESS DOC M PACK



MERIDIAN ACCESS DOC M PACK



MERIDIAN AMBULANT PACK



MERIDIAN ALTERNATIVE SETTING



URINALS

006-013

DOC M PACKS

Laura Access

Meridian Access

014-017

AMBULANT PACKS

Laura Access

Meridian Access

018-021

ALTERNATIVE LAYOUTS

Laura Access

Meridian Access

022-023

URINALS

Site Frontal

Hall

Spun

Chic

024

CLEANER'S SINK

Hamito Sink

FREQUENTLY ASKED QUESTIONS

What is Part M?

Part M of the building regulations addresses the access to and use of buildings.

What is WRAS?

Products approved by the UK's Water Regulations Advisory Scheme (WRAS) scheme comply with high standards set out by the Water Fittings Regulations.

What is a TMV (thermostatic mixing valve)?

A TMV is a valve which combines hot and cold water to ensure a constant temperature to prevent scalding. Roca's TMV & thermostatic basin mixer are both suitable for domestic or commercial use.

What is BS 8300?

BS 8300 provides guidance on good practice in the design of domestic and non-domestic buildings, and their approaches meaning they are convenient for use by disabled people.

What is the difference between a regular WC and an accessible WC?

Both WC's fully comply with BS EN 997:2012, however an accessible WC is larger so that a wheelchair user can easily transfer from a wheelchair to the pan, as the height of the pan with the seat is the same height as the wheelchair. Both Meridian Access and Laura Access pans project 750mm and are 480mm high (to the top of the seat).

What is the difference between exposed and concealed grab rails?

Screws and fixings will be visible when exposed grab rails are fitted; concealed grab rails include covers which hide the fittings, offering a deluxe finish which is ideal for hotel specifications.

What is LABC and what are the benefits?

LABC (formerly known as LANTAC) register products which comply with Part M building regulations enabling local authority building control teams to quickly accept and approve specifications. Registration reassures customers that the products being installed are fully compliant and safe to use.

What are the benefits of copper tails with the thermostatic basin mixer?

Copper tails included with the thermostatic basin mixer reduces the risk of contamination and discourages bacteria growth making them ideal for healthcare and hospital areas.

What does the term 'Ambulant Disabled' mean?

Ambulant disabled refers to people who suffer from a disability but are not necessarily reliant on using a wheelchair. Ambulant disabled people still require assistance within the bathroom space such as a raised pan or contrasting grab rails.

Where should wheelchair accessible toilets be located within a building?

There are several provisions of where a unisex wheelchair accessible washroom should be located within a building:

- As close as possible to the entrance/ waiting area of the building.
- Not in a way which would compromise the privacy of the user.
- Located in a similar position on each floor of a multi-storey building, and allow for right and left hand transfer on alternate floors.
- When it is the only toilet facility in the building, it must be a unisex wheelchair accessible washroom, and the width must be increased from 1.5m to 2m and should include a standard height washbasin in addition to the finger rinse basin.
- On an accessible route which is direct and obstruction free.
- Any wheelchair user should not have to travel more than 40m on the same floor or more than 40m on a combined horizontal distance where the unisex washroom is on another floor but is accessible via a passenger lift.

FACTS

- 1 in every 20 rooms must supply an accessible washroom for disabled use
- New houses must offer a WC facility on the entry level floor suitable for wheelchair access
- If there is only one toilet facility available it must be a large unisex wheelchair accessible washroom
- All washrooms must have one ambulant cubicle
- Where there are four cubicles, including an ambulant cubicle an enlarged cubicle must also be provided

FEATURES AND BENEFITS OVERVIEW

Laura Access

LABC Approved



Meridian Access

LABC Approved





Laura Access Doc M Pack

Unisex Wheelchair Accessible Washroom

A timeless design, where both style and budget are important, the Laura Access Doc M pack provides an affordable solution in one box, fully LABC registered and designed to meet Part M regulations.

The pack includes a close-coupled WC, seat, anti-vandal bracket, basin, basin mixer, thermostatic mixing valve, waste, chrome bottle trap and grab rails. Seat & grab rails are available in three colour options and there is the option of a left or right hand basin, making it suitable for a unisex wheelchair accessible washroom.

The hinged grab rail with integrated toilet roll holder provides additional support next to the WC.



Seat retaining buffers offer extra support during transfer.





1. Laura Access Doc M pack with left hand basin

Pack includes: Laura Access WC with cistern, lever, fixing kit, anti-vandal bracket, seat, left hand basin, basin mixer, thermostatic mixing valve, press-down waste, chrome bottle trap and grab rails*.

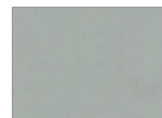
Pack price with white seat and grab rails	£920.00	(£1,104.00)	0010020WH
Pack price with blue seat and grab rails	£920.00	(£1,104.00)	0010020BL
Pack price with grey seat and grab rails	£920.00	(£1,104.00)	0010020GR



0010020WH White



0010020BL Blue



0010020GR Grey



2. Laura Access Doc M pack with right hand basin

Pack includes: Laura Access WC with cistern, lever, fixing kit, anti-vandal bracket, seat, right hand basin, basin mixer, thermostatic mixing valve, press-down waste, chrome bottle trap and grab rails*.

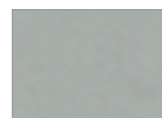
Pack price with white seat and grab rails	£920.00	(£1,104.00)	0010010WH
Pack price with blue seat and grab rails	£920.00	(£1,104.00)	0010010BL
Pack price with grey seat and grab rails	£920.00	(£1,104.00)	0010010GR



0010010WH White



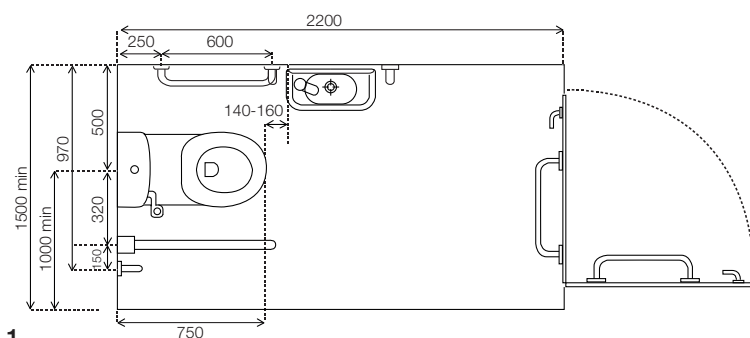
0010010BL Blue



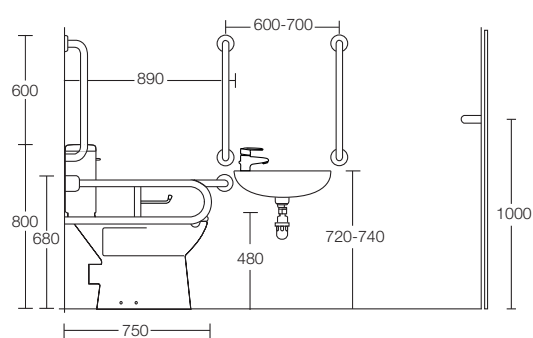
0010010GR Grey

*Included in the Doc M pack are five 600mm grab rails and one hinged grab rail.

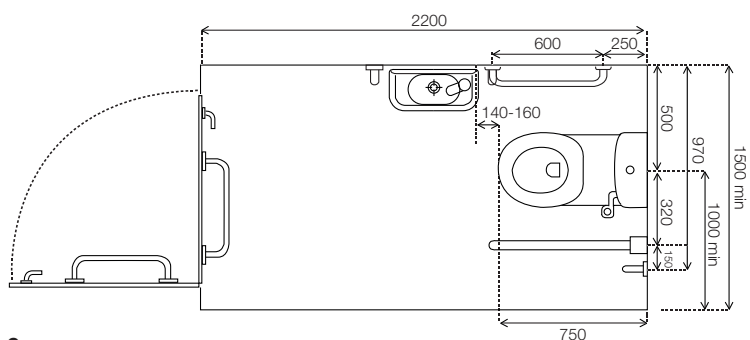
Left hand basin



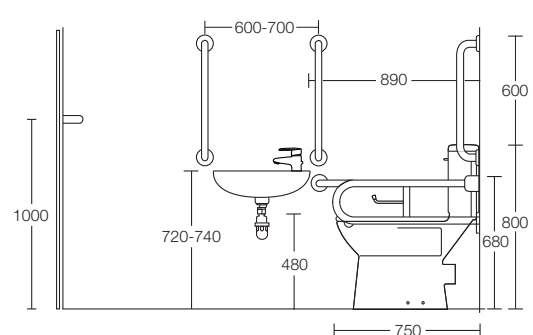
1.



Right hand basin



2.



Laura Access Doc M Range Components



1. Close-coupled WC

Pan - open back including floor fixing kit	£246.75	(£296.10)	342238000
Cistern including fittings	£197.40	(£236.88)	341232000
Cistern lever	£12.60	(£15.12)	00122A510
Anti-vandal bracket	£10.50	(£12.60)	003399880
White seat	£73.50	(£88.20)	801300221
Blue seat	£73.50	(£88.20)	801300223
Grey seat	£73.50	(£88.20)	801300222

Note: Anti-vandal bracket and lever to be ordered with the cistern.



LH



RH

2. Basins

RH basin including wall fixing kit*	£60.90	(£73.08)	327231000
LH basin including wall fixing kit*	£60.90	(£73.08)	327232000
Press-down waste (slotted)	£14.03	(£16.84)	D50010005
Bottle trap - chrome	£37.59	(£45.11)	506401614

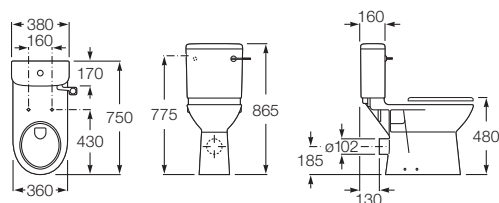
*Handed by the tap



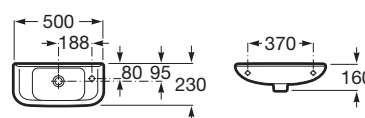
3. Basin mixer

Basin mixer	£99.75	(£119.70)	001234567
Thermostatic mixing valve	£78.75	(£94.50)	001224567

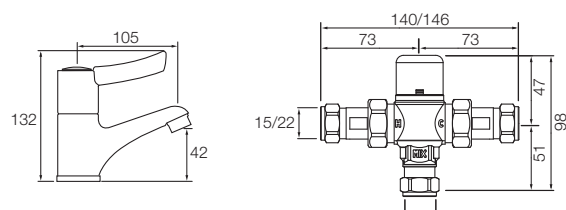
Note: Thermostatic mixing valve to be used with basin mixer to prevent scalding.



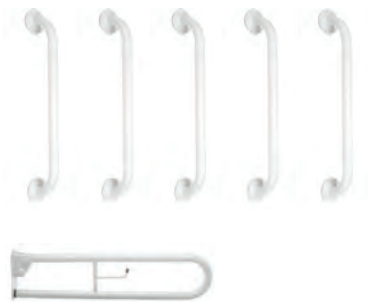
1.



2.



3.



4. Grab rail packs*

White grab rails pack	£131.25	(£157.50)	001120014
Blue grab rails pack	£131.25	(£157.50)	001120016
Grey grab rails pack	£131.25	(£157.50)	001120018

* Includes five 600mm grab rails and one hinged grab rail



5. Individual grab rails

White 600mm	£16.80	(£20.16)	001110014
Blue 600mm	£16.80	(£20.16)	001110016
Grey 600mm	£16.80	(£20.16)	001110018

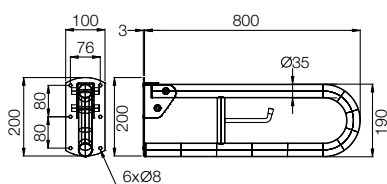
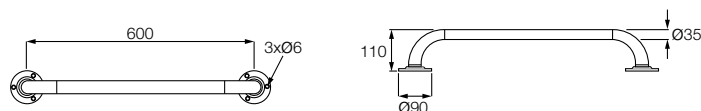


6. Individual hinged grab rails

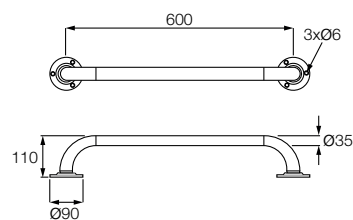
White hinged 800mm*	£47.25	(£56.70)	001130014
Blue hinged 800mm*	£47.25	(£56.70)	001130016
Grey hinged 800mm*	£47.25	(£56.70)	001130018

*Includes integrated toilet roll holder

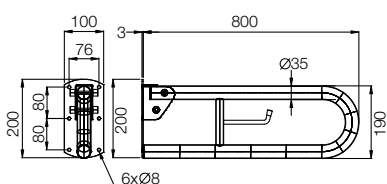
Note: Fixings are not supplied with the grab rails, please consult a qualified tradesman before fitting.



4.



5.



6.



Meridian Access Doc M Packs

Unisex Wheelchair Accessible Washroom

With stunning modern lines and concealed grab rails, Meridian Access packs create a luxury setting. The pack includes a close-coupled WC, seat, anti-vandal bracket, basin, basin mixer with an integrated thermostatic mixing valve, waste, bottle trap and concealed grab rails. Seat & grab rails are available in three colour options and there is the option of a left or right hand basin, making it suitable for a unisex wheelchair accessible solution.

The basin mixer features copper tails which are extremely hygienic and prevent the growth of bacteria.



The cistern and cistern lid are fixed to the wall with the anti-vandal bracket.





1. Meridian Access Doc M pack with left hand basin

Pack includes: Meridian Access WC with cistern, lever, fixing kit and anti-vandal bracket, seat, left hand basin, thermostatic basin mixer, press-down waste, chrome bottle trap and grab rails.*

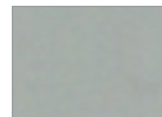
Pack price with white seat and grab rails	£1,430.00	(£1,716.00)	0020020WH
Pack price with blue seat and grab rails	£1,430.00	(£1,716.00)	0020020BL
Pack price with grey seat and grab rails	£1,430.00	(£1,716.00)	0020020GR



0020020WH White



0020020BL Blue



0020020GR Grey



2. Meridian Access Doc M pack with right hand basin

Pack includes: Meridian Access WC with cistern, lever, fixing kit and anti-vandal bracket, seat, right hand basin, thermostatic basin mixer, press-down waste, chrome bottle trap and grab rails.*

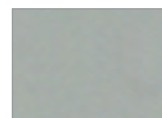
Pack price with white seat and grab rails	£1,430.00	(£1,716.00)	0020010WH
Pack price with blue seat and grab rails	£1,430.00	(£1,716.00)	0020010BL
Pack price with grey seat and grab rails	£1,430.00	(£1,716.00)	0020010GR



0020010WH White



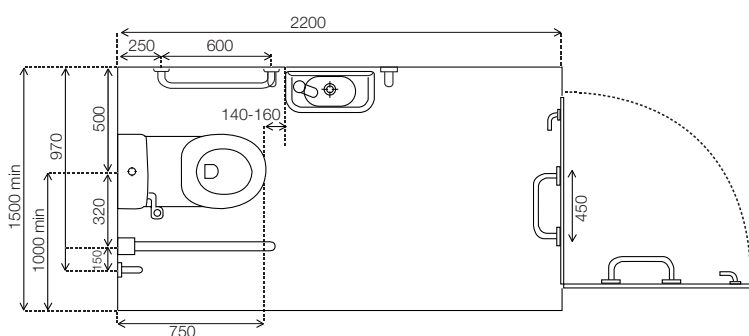
0020010BL Blue



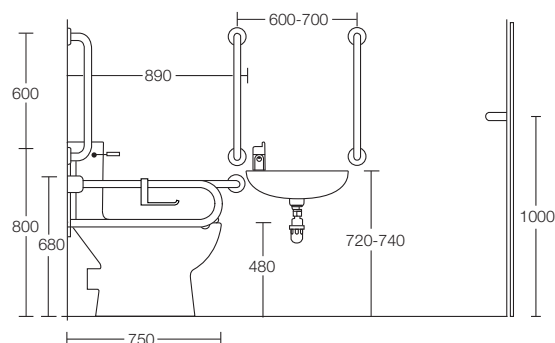
0020010GR Grey

*Included in the Doc M pack are four 600mm grab rails, one 450mm grab rail and one hinged grab rail.

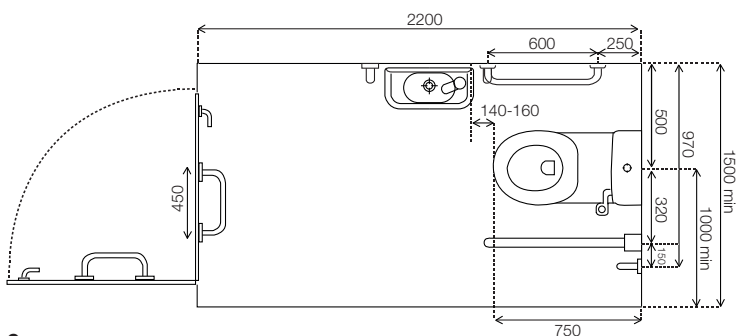
Left hand basin



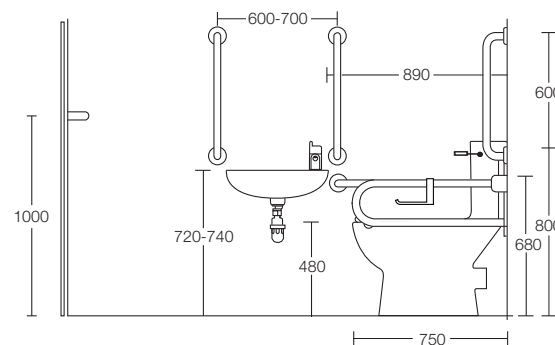
1.



Right hand basin



2.



Meridian Access Doc M Range Components



1. Close-coupled WC

Pan - open back including floor fixing kit	£313.95	(£376.74)	34224H000
Cistern including fittings	£313.95	(£376.74)	34124K000
Cistern lever	£12.60	(£15.12)	00122A510
Anti-vandal bracket	£10.50	(£12.60)	003399880
White seat	£73.50	(£88.20)	801300221
Blue seat	£73.50	(£88.20)	801300223
Grey seat	£73.50	(£88.20)	801300222

Note: Anti-vandal bracket and lever to be ordered with the cistern.



LH



RH

2. Basins

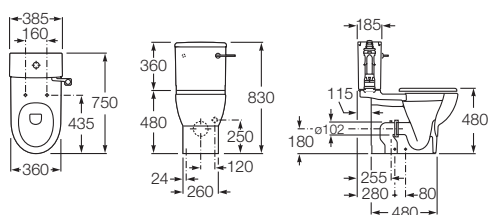
RH basin including wall fixing kit*	£60.90	(£73.08)	327231000
LH basin including wall fixing kit*	£60.90	(£73.08)	327232000
Press-down waste (slotted)	£14.03	(£16.84)	D50010005
Bottle trap - chrome	£37.59	(£45.11)	506401614

*Handed by the tap

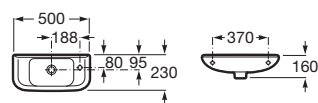


3. Thermostatic basin mixer

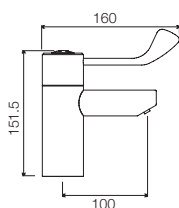
Thermostatic basin mixer with copper tails	£309.75	(£371.70)	001224568
--------------------------------------------	---------	-----------	-----------



1.



2.



3.



4. Grab rail packs*

White grab rails pack	£325.50	(£390.60)	001120015
Blue grab rails pack	£325.50	(£390.60)	001120017
Grey grab rails pack	£325.50	(£390.60)	001120019

Please note that the toilet roll holder must be ordered separately.

* Includes four 600mm grab rails, one 450mm grab rail and one 800mm hinged grab rail



5. Individual grab rails

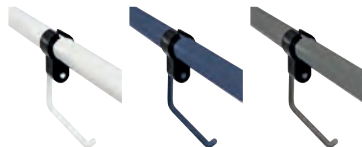
White 450mm	£39.90	(£47.88)	001140015
Blue 450mm	£39.90	(£47.88)	001140017
Grey 450mm	£39.90	(£47.88)	001140019
White 600mm	£39.90	(£47.88)	001110015
Blue 600mm	£39.90	(£47.88)	001110017
Grey 600mm	£39.90	(£47.88)	001110019



6. Individual hinged grab rails

White hinged 800mm	£126.00	(£151.20)	001130015
Blue hinged 800mm	£126.00	(£151.20)	001130017
Grey hinged 800mm	£126.00	(£151.20)	001130019

Please note that the toilet roll holder must be ordered separately.

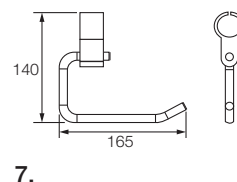
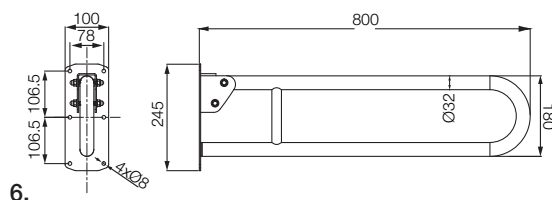
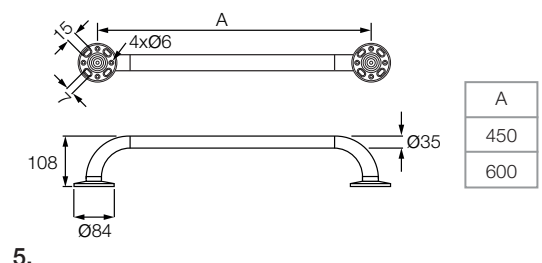
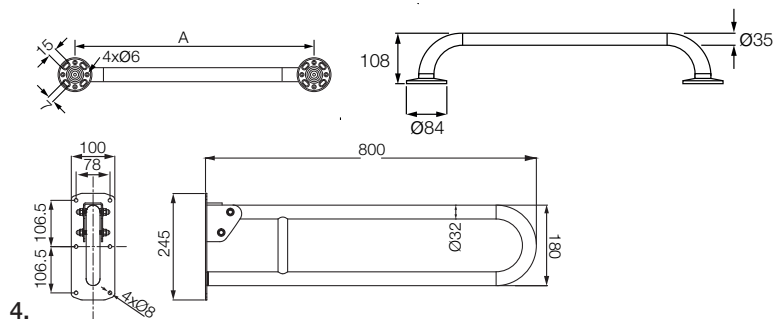


7. Toilet roll holders*

White toilet roll holder	£26.25	(£31.50)	001150015
Blue toilet roll holder	£26.25	(£31.50)	001150017
Grey toilet roll holder	£26.25	(£31.50)	001150019

*The toilet roll holder is designed to fit on the hinged grab rail.

Note: Fixings are not supplied with the grab rails, please consult a qualified tradesman before fitting.

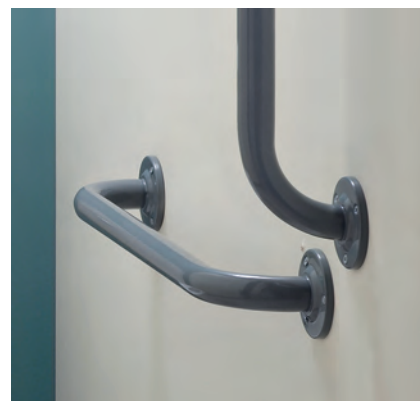




Laura Access Ambulant Packs

An affordably priced ambulant WC pack, including a raised height WC and grab rails, provides ease of use for those who do not require a fully equipped disabled washroom.

There should be four grab rails placed in the cubicle to aid use.



There are two holes on the cistern so that the lever can be positioned on the left or the right.



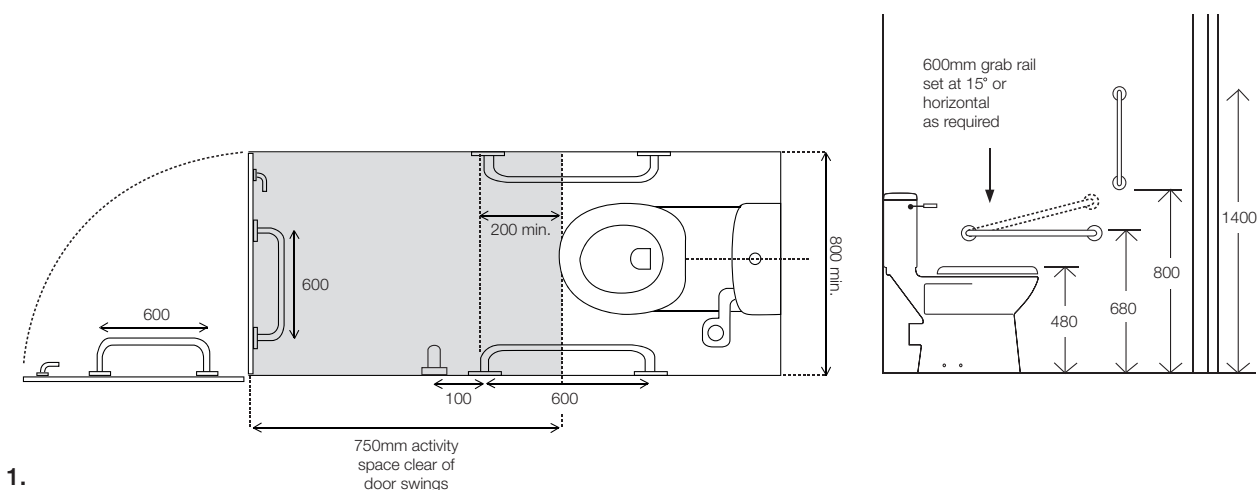


1. Laura Access Ambulant pack

Pack includes: Laura Access WC with cistern, spatula lever, fixing kit, anti-vandal bracket, seat and grab rails*.

Pack price with white seat and grab rails	£579.00	(£694.80)	0030010WH
Pack price with blue seat and grab rails	£579.00	(£694.80)	0030010BL
Pack price with grey seat and grab rails	£579.00	(£694.80)	0030010GR

*Included in the ambulant pack are four 600mm grab rails



Laura Access Ambulant Range Components



Close-coupled WC

Pan - open back including floor fixing kit	£246.75	(£296.10)	342238000
Cistern including cistern fittings	£197.40	(£236.88)	341232000
Cistern lever	£12.60	(£15.12)	00122A510
Anti-vandal bracket	£10.50	(£12.60)	003399880
White seat	£73.50	(£88.20)	801300221
Blue seat	£73.50	(£88.20)	801300223
Grey seat	£73.50	(£88.20)	801300222



Individual Grab Rails

White 600mm	£16.80	(£20.16)	001110014
Blue 600mm	£16.80	(£20.16)	001110016
Grey 600mm	£16.80	(£20.16)	001110018

Note: Fixings are not supplied with the grab rails, please consult a qualified tradesman before fitting.

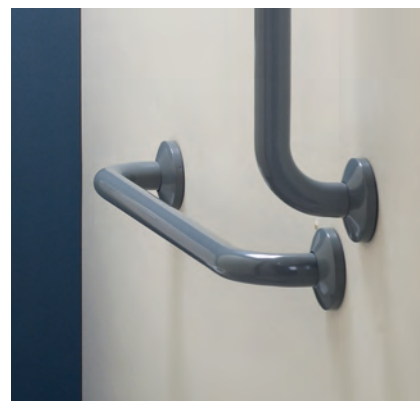


Meridian Access Ambulant Packs

.....
An elegant WC cubicle facility for ambulant disabled people who do not require a full Doc M solution.

Concealed grab rails ensure the fittings are not visible when fitted.

.....



The WC benefits from secure floor fittings which offer extra stability in public places.

.....



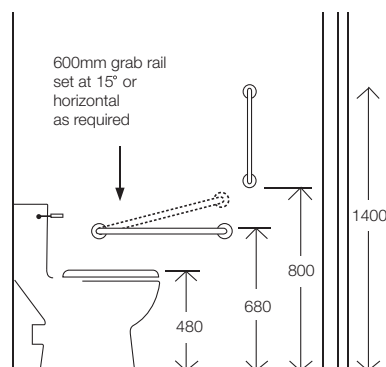
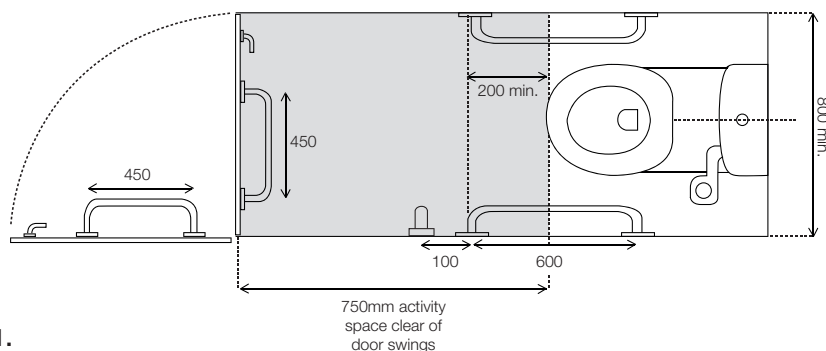


1. Meridian Access Ambulant pack

Pack includes: Meridian Access WC with cistern, spatula lever, fixing kit and anti-vandal bracket, seat and grab rails*.

Pack price with white seat and grab rails	£842.00	(£1,010.40)	0040010WH
Pack price with blue seat and grab rails	£842.00	(£1,010.40)	0040010BL
Pack price with grey seat and grab rails	£842.00	(£1,010.40)	0040010GR

*Included in the ambulant pack are three 600mm grab rails and one 450mm grab rail.



1.

Meridian Access Ambulant Range Components



Close-coupled WC

Pan - open back including floor fixing kit	£313.95	(£376.74)	34224H000
Cistern including cistern fittings	£313.95	(£376.74)	34124K000
Cistern lever	£12.60	(£15.12)	00122A510
Anti-vandal bracket	£10.50	(£12.60)	003399880
White Seat	£73.50	(£88.20)	801300221
Blue Seat	£73.50	(£88.20)	801300223
Grey Seat	£73.50	(£88.20)	801300222



Individual grab rails

White 450mm	£39.90	(£47.88)	001140015
Blue 450mm	£39.90	(£47.88)	001140017
Grey 450mm	£39.90	(£47.88)	001140019
White 600mm	£39.90	(£47.88)	001110015
Blue 600mm	£39.90	(£47.88)	001110017
Grey 600mm	£39.90	(£47.88)	001110019

Note: Fixings are not supplied with the grab rails, please consult a qualified tradesman before fitting.



Laura Access Alternative setting

Designed to provide access from both sides of the WC, the alternative room setting is ideal for larger spaces.

A larger basin option makes this setting accessible for all users.



Grab rails must stand out from the tile colour to aid the visually impaired



Laura Access Range Components



Close-coupled WC

Pan - open back including floor fixing kit	£246.75	(£296.10)	342238000
Cistern including cistern fittings	£197.40	(£236.88)	341232000
Cistern lever	£12.60	(£15.12)	00122A510
Anti-vandal bracket	£10.50	(£12.60)	003399880
White seat	£73.50	(£88.20)	801300221
Blue seat	£73.50	(£88.20)	801300223
Grey seat	£73.50	(£88.20)	801300222



Basin

Laura basin 560x460mm 1 taphole	£65.10	(£78.12)	326393005
Wall-hung basin fixing kit	£7.22	(£8.66)	822045500
Chrome bottle trap	£37.59	(£45.11)	506401614
Press-down waste	£14.03	(£16.84)	D50010005



Basin mixer

Basin mixer	£99.75	(£119.70)	001234567
Thermostatic mixing valve	£78.75	(£94.50)	001224567



Individual grab rails

White 600mm	£16.80	(£20.16)	001110014
Blue 600mm	£16.80	(£20.16)	001110016
Grey 600mm	£16.80	(£20.16)	001110018

Note: This setting requires five 600mm grab rails

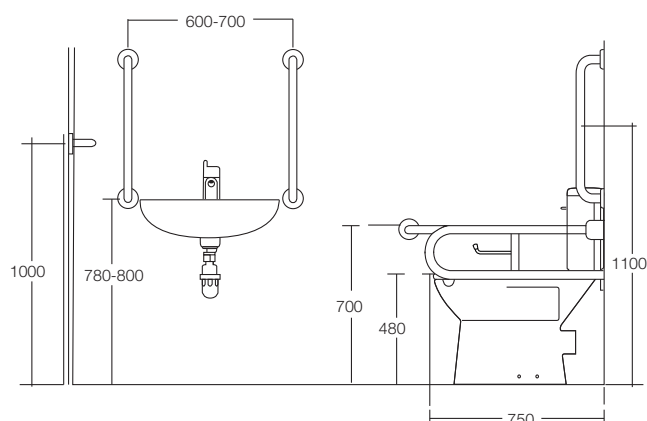
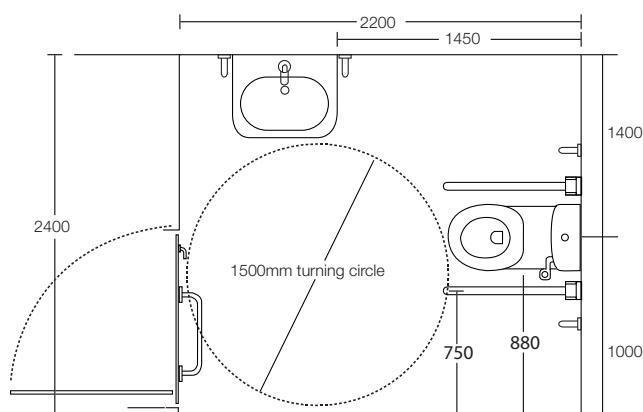


Individual hinged grab rails

White hinged with toilet roll holder	£47.25	(£56.70)	001130014
Blue hinged with toilet roll holder	£47.25	(£56.70)	001130016
Grey hinged with toilet roll holder	£47.25	(£56.70)	001130018
White hinged	£47.25	(£56.70)	001160014
Blue hinged	£47.25	(£56.70)	001160016
Grey hinged	£47.25	(£56.70)	001160018

Note: This setting requires one of each hinged grab rail

Note: Fixings are not supplied with the grab rails, please consult a qualified tradesman before fitting.





Meridian Access Alternative setting

Where aesthetics are important the Meridian Access alternative solution provides a clean, modern approach for a larger setting.

With a hinged grab rail either side of the WC, access can be achieved easily.



The seat buffers ensure the seat is secure during transfer.



Meridian Access Range Components



Close-coupled WC

Pan - open back including floor fixing kit	£313.95	(£376.74)	34224H000
Cistern including cistern fittings	£313.95	(£376.74)	34124K000
Cistern lever	£12.60	(£15.12)	00122A510
Anti vandal bracket	£10.50	(£12.60)	003399880
White seat	£73.50	(£88.20)	801300221
Blue seat	£73.50	(£88.20)	801300223
Grey seat	£73.50	(£88.20)	801300222



Basin

Meridian basin 550x460mm 1 taphole	£173.87	(£208.64)	327243000
Chrome Bottle Trap	£37.59	(£45.11)	506401614
Press-down Waste	£14.03	(£16.84)	D50010005



Thermostatic basin mixer

Thermostatic basin mixer	£309.75	(£371.70)	001224568
--------------------------	---------	-----------	-----------



Individual grab rails

White 600mm	£39.90	(£47.88)	001110015
Blue 600mm	£39.90	(£47.88)	001110017
Grey 600mm	£39.90	(£47.88)	001110019

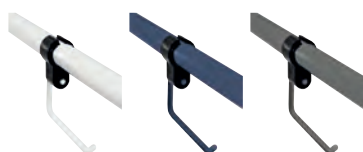
Note: This setting requires five 600mm grab rails



Individual hinged grab rails

White hinged 800mm	£126.00	(£151.20)	001130015
Blue hinged 800mm	£126.00	(£151.20)	001130017
Grey hinged 800mm	£126.00	(£151.20)	001130019

Note: This setting requires two hinged grab rails

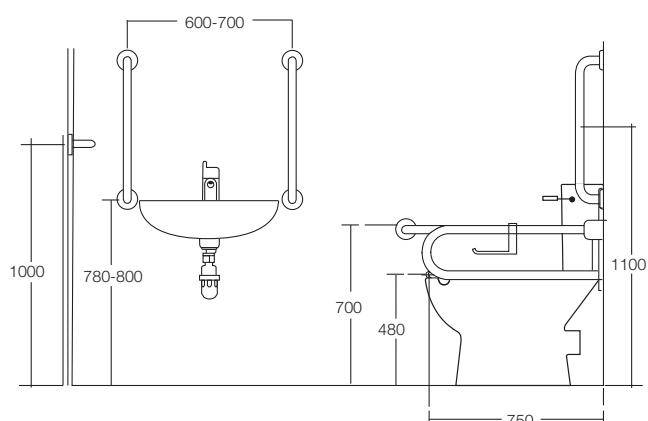
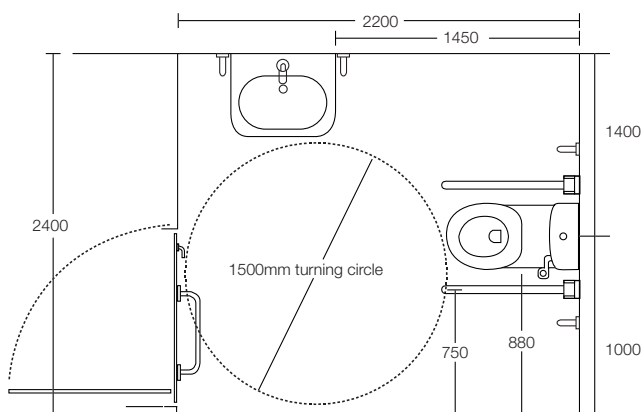


Toilet roll holders*

White toilet roll holder	£26.25	(£31.50)	001150015
Blue toilet roll holder	£26.25	(£31.50)	001150017
Grey toilet roll holder	£26.25	(£31.50)	001150019

Note: This setting requires one toilet roll holder only

Note: Fixings are not supplied with the grab rails, please consult a qualified tradesman before fitting.





Urinals

Our new range of urinals are as much a style statement as a practical washroom solution.

The new stylish and practical Site Frontal Urinal offers design and installation flexibility.

The modern design of Chic with the option of a concealed or exposed overflow, make it a statement bathroom piece.



Spun urinals are available with a concealed overflow



1. Site Frontal

For concealed pipework	£341.67	(£410.00)	35960A000
For exposed pipework	£341.67	(£410.00)	35960B000
Waste - 75mm trap	£20.00	(£24.00)	HCUP50UK0
Includes wall fixings			



2. Hall

For concealed pipework	£308.33	(£370.00)	353623000
Waste - 75mm trap	£20.00	(£24.00)	HCUP50UK0
Includes wall fixings			



3. Spun

For concealed pipework	£266.67	(£320.00)	35314A000
Waste - 75mm trap	£20.00	(£24.00)	HCUP50UK0
Wall fixings	£7.61	(£9.13)	V0009400R



4. Chic

For concealed pipework	£162.50	(£195.00)	35945A000
For exposed pipework	£162.50	(£195.00)	35945B000
Waste - 75mm trap	£20.00	(£24.00)	HCUP50UK0
Includes wall fixings			



5. Wing Divider

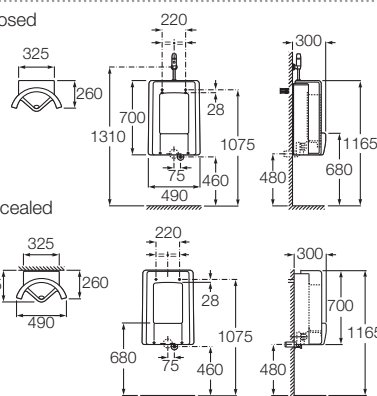
Wing divider	£181.17	(£217.40)	387090000
Includes wall fixings			



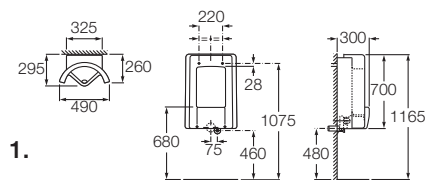
6. Spun Divider

Spun divider	£108.33	(£130.00)	387091000
Includes wall fixings			

Exposed



Concealed

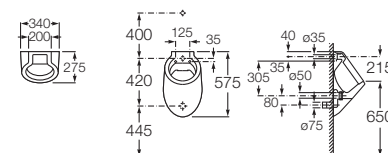
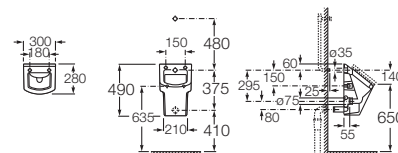


1.

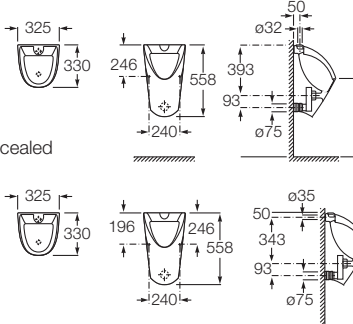
2.

3.

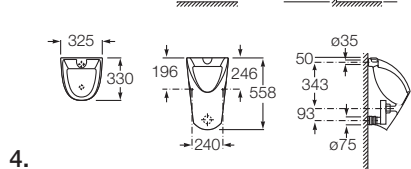
For urinal flushing solutions Roca recommends Dart Valley and Cisterniser.



Exposed



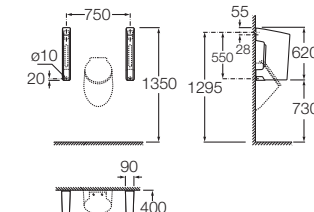
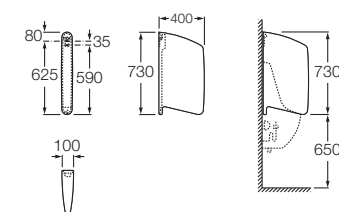
Concealed



4.

5.

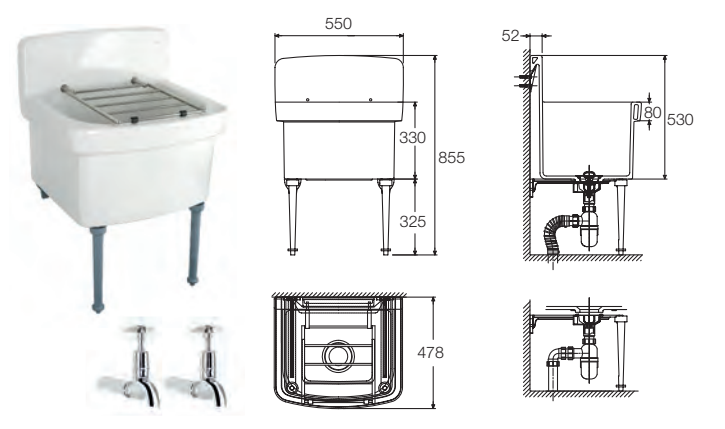
6.



Cleaner's Sink

An essential feature for every commercial building, our cleaner's sink is perfect for both hygiene and housekeeping. Suitable for all environments from hotels to hospitals.

Hamito set – Includes sink, grate, legs & brackets	£492.58	(£591.10)	037145555
Hamito sink	£210.00	(£252.00)	371459000
Hamito sink grate	£120.00	(£144.00)	037144000
Leg (code is for 1 leg)	£40.00	(£48.00)	037145222
Leg bracket (code is for 1 bracket)	£20.00	(£24.00)	037145111
Wall-mounted bib taps (pair)	£40.00	(£48.00)	037145333
Wall-mounted 100mm extension for bib taps (pair)	£28.50	(£34.20)	037145444



For further information on urinal flushing solutions, please contact Dart Valley Systems or Cistermiser.



Dart Valley Systems

Kemmings Close
Long Road
Paignton
Devon
TQ4 7TW
Telephone: 01803 529021
Email: sales@dartvalley.co.uk



Cistermiser

Unit 1, Woodley Park Estate
59-69 Reading Road
Woodley
Berkshire
RG5 3AN
Telephone: 0118 969 1611
Email: sales@cistermiser.co.uk

Notes



Roca London Gallery

Station Court
Townmead Road
London, SW6 2PY

+44 (0)20 7610 9503

info.londongallery@roca.net

 @RocaLONGallery

Opening times:

Mondays to Fridays from 9am to 5:30pm.

Saturdays from 11am to 5pm.

Open until 8pm on the last Tuesday of every month.



Roca Solutions.

Roca offers you a multitude of solutions for the various elements that make up your bathroom. For further information, please consult your Roca Dealer or visit www.uk.roca.com



United Kingdom

Roca Limited

Samson Road
Hermitage Industrial Estate
Coalville, Leicestershire.
LE67 3FP – UK
Telephone +44 1530 830080
Fax +44 1530 830010
www.uk.roca.com

Roca London Gallery

Station Court
Townmead Road
London
SW6 2PY – UK
Telephone +44 20 7610 9503
www.rocalondongallery.com

Roca Ireland

Unit 628A Jordanstown Avenue
Greenogue Industrial Estate
Rathcoole
Co. Dublin
Telephone +35 31 401 9340

Head Office

Roca Sanitario, S.A.

Avda. Diagonal, 513
08029 Barcelona – Spain
Telephone +34 93 366 1200
Fax +34 93 419 4501
www.es.roca.com
www.roca.es

Roca Barcelona Gallery

Joan Güell, 211-213
08028 Barcelona – Spain
Telephone +34 93 366 12 12
Fax + 34 93 339 68 74
www.rocabarcelonagallery.com

Roca Madrid Gallery

José Abascal, 57
28003 Madrid – Spain
Telephone +34 91 442 3034
Fax + 34 91 399 2227
www.rocamadridgallery.com

Expo Bath Barcelona

Avda. Sarriá, 131-135
08017 Barcelona – Spain
Telephone +34 93 280 2929
Fax +34 93 280 0236

Roca in Europe

Germany
Roca GmbH
Feincheswiese 17
D-56424 Staudt – Germany
Telephone +49 2602 93 610
Fax +49 2602 93 6122
www.roca.com/de

Austria

Laufen Austria, AG.
Mariazeller Strasse, 100
A-3150 Wilhelmsburg – Austria
Telephone +43 2746 60 60 0
Fax +43 2746 60 60 390
www.roca.com

Benelux

Laufen Benelux, B.V.
Postbus 2702
NL-3821 BM Amersfoort –
The Netherlands
Telephone +31 0 33 450 20 90
Fax +31 0 33 450 20 91
www.rocabathrooms.nl

Bulgaria

Roca Bulgaria A.D
5, Pirotska Str.
1301 Sofia – Bulgaria
Telephone +359 2 9305910
Fax +359 2 9305919
www.roca-bulgaria.bg

Showroom Sofia
16, Maria Luiza Blvd
1000 Sofia – Bulgaria
Telephone +359 2 939 60 90
Fax +359 2 939 60 80

Croatia

Inker
Industrijska, 1
10290 Zapresic – Croatia
Telephone +385 133 103 64
Fax +385 133 102 75
www.roca.com

Slovakia

Laufen SK s.r.o.
Štefanovic'ova 12
811 04 Bratislava – Slovakia
Telephone +421 252 621 024
Fax +421 252 621 025
www.roca.cz

Spain

Roca Sanitario, S.A.
Avda. Diagonal, 513
08029 Barcelona – Spain
Telephone +34 93 366 1200
Fax +34 93 419 4501
www.roca.com

Showroom Madrid
José Abascal, 57
28003 Madrid – Spain
Telephone +34 91 441 3500
Fax + 34 91 442 4802

Showroom Barcelona
Avda. Sarriá, 131-135
08017 Barcelona – Spain
Telephone +34 93 280 2929
Fax +34 93 280 0236

France

Roca
B.P. 90422
95005 Cergy – Pontoise Cedex –
France
Telephone +33 134 40 3900
Fax +33 130 37 0265 / 134 64 1355
www.roca.fr

Greece

Roca Hellas, S.A.
59, Agiou Konstantinou&Elenis street
Ag. Dimitrios
17342 Athens – Greece
Telephone +30 210 8054721
Fax +30 210 8054721
www.roca.com

Hungary

Laufen CZ s.r.o.
Ördögárok u. 121
H-1029 Budapest – Hungary
Telephone +36 1 376 96 24
Fax +36 1 376 96 24
www.roca.com

Italy

Roca S.r.l.
Via Leonardo da Vinci, 24
20080 Casarile (MI) – Italy
Telephone +39 02 90 02 51
Fax +39 02 90 52174
www.roca-italia.it

Baltic states

Laufen CZ s.r.o. – Baltic Office
Užupio g. 30
LT-01203 Vilnius – Lithuania
Telephone +370 5 215 3076
Fax +370 5 215 3086
www.roca.lt

Nordic countries

Laufen Nordic Aps
Fejervej 8
DK-4652 Hårlev – Denmark
Telephone +45 56 287 287
Fax +45 56 287 237
www.roca.com

Poland

Roca Polska Sp. z o.o.
ul. Wyszczolkowskiego, 20
44-109 Gliwice – Poland
Telephone +48 32 339 4100
Fax +48 32 339 4102
www.roca.pl

Portugal

Roca S.A.
Apartado 575
Ponte da Madalena
2416 – 905 Leiria – Portugal
Telephone +351 244 720 000
Fax +351 244 722 373
www.roca.pt

United Kingdom

Roca Limited
Samson Road
Hermitage Industrial Estate
Coalville, Leicestershire. LE67 3FP –
UK
Telephone +44 1530 830080
Fax +44 1530 830010
www.uk.roca.com

Czech Republic

Laufen CZ s.r.o.
V Tuřích 3/1637
CZ-120 00 Praha 2 – Czech Republic
Telephone +420 296 337 716
Fax +420 296 337 713
www.roca.cz

Showroom Praha
I.P. Pavlova 5
CZ-120 00 Praha 2 – Czech Republic
Telephone +420 296 337 701

Romania

Roca Obiecte Sanitare S.R.L.
Boulevard Preciziei, 1 nr. 1 Sector 6
062202 – Bucurest – Romania
Telephone +4031 822 2310
Fax +4021 318 1418
www.roca.com

Russia

Roca Santechnik
Promyshlennaya Str. 7, Tosno,
Leningrad region, 187000 – Russia
Telephone +7 812 347 94 49
Fax +7 812 347 94 50
www.roca-russia.ru

Roca Santechnik (Moscow)
Altufievskoye shosse, 1/7
Moscow, 127106 – Russia
Telephone +7 495 956 33 30 / 230
65 48
Fax +7 495 234 07 97
www.roca-russia.ru

Ukraine

Laufen CZ s.r.o. – Ukraine Office
19, Ak. Tupoleva str., office "Laufen"
Kiev 04128 – Ukraine
Telephone +380 44 499 0620
Fax +380 44 499 0621
www.roca.net.ua

Roca in Asia

China

Roca (China) Co., Ltd.
Room 503-505 City Gateway
No.396 Cao Xi Road North
200030 Shanghai – China
Telephone +86 21 33688822
Fax +86 21 33688299
www.roca.cn
Showroom Shanghai
1F City Gateway
No.396 Cao Xi Road North
200030 Shanghai – China
Telephone +86 21 33688300
Fax +86 21 33688301

Showroom Beijing
Roca Showroom
1st Floor of Tianheng Plaza
No.46 of Dongzhimenwai Street
Dongcheng district
100027 Beijing – China
Telephone +86 10 84608586 /
+86 10 84608588
Fax +86 10 64176997

Hong Kong

Roca Asia Limited
Room 2303, 23/F
148 Electric Road. North Point –
Hong Kong
Telephone +852 25 06 24 38
Fax +852 25 06 24 92
www.roca.hk

India

Parryware Roca Pvt. Ltd.
Dare House, 234. N.S.C. Bose Road
Chennai 600 001 – India
Telephone +91 44 2530 6789
Fax +91 44 2534 0034
www.rocaindia.com

Malaysia

Johnson Suisse Sdn. Bhd. (257640-V)
Lot 2, Jalan 225, Petaling Jaya,
46100 Selangor Darul Ehsan –
Malaysia
Telephone +603 7952 2522
Fax +603 7958 6860
www.roca.com

Middle East

Roca Sanitario, S.A.
(Representation Office)
Sheikh Zayed Road, 4th Interchange
Gold & Diamond Park, Building 5,
Office
111 P.O. Box 282337, Al Quoz Branch
Dubai – United Arab Emirates
Telephone +971 4 347 64 00
Fax +971 4 347 64 08
www.roca.com

Singapore

Johnson Suisse (Singapore) Pte Ltd
No. 2, Clementi Loop, #04-01
Logishub @ Clementi
Singapore 129809
Tel +65 6261 6133
Fax +65 6265 5979
www.roca.com

Roca in Africa

Morocco

Roca Maroc, S.A.
Route de Marrakech, Km. 2,5
B.P. 571 – 26000 Settat – Morocco
Telephone +212 23 40 5941 / 40 3939
Fax +212 23 40 5942
www.roca.com

Showroom Casablanca
96, Bd Massira Al Khadra
20100 Casablanca – Morocco
Telephone +212 22 39 6096
Fax +212 22 36 6019

Roca in America

Argentina

Roca Argentina, S.A.
Camino Gral. Belgrano,
2873 – B1824JRH
Lanús – Buenos Aires – Rep. Argentina
Telephone +54 11 4365 5000
Fax +54 11 4365 5024
www.roca-argentina.com.ar

Brazil

Roca Brasil Ltda.
Av. 14 de Dezembro, 2800
Vila Mafalda 13206 – 105
Jundiaí – SP – Brazil
Telephone +51 11 3378 4827
Fax +51 11 3378 4629
www.rocabrasil.com.br

Showroom São Paulo
Avenida Brasil, 2188
Jardim América
São Paulo – SP – CEP 01430-001
– Brazil
Telephone +51 11 3061 5266

Roca in Oceania

Australia

Roca
Macquarie House
Level 13, Office 1318
167 Macquarie Street
Sydney NSW 2000 – Australia
Telephone +61 (0) 2 86673069
www.roca.com

For additional images and bathroom solutions please visit www.uk.roca.com

The new Roca website, more functional and dynamic

In 2014 we launched our new, user friendly website, including an advanced search engine and a product comparison tool.

Available on computers, smartphones and tablets, providing instant access 24 hours a day, 7 days a week.

Visit us at www.uk.roca.com today!



Roca Catalogue App

available for iPad and Android

All of our products at your fingertips.

Providing easy access to over 2,500 products, plan your ideal bathroom quickly and easily.

Available free of charge.



Roca Ltd.

Samson Road, Hermitage Ind. Estate
Coalville, Leicestershire, LE67 3FP
Tel: 01530 830 080
Fax: 01530 830 010
www.uk.roca.com

Roca Ireland.

Unit 628A, Jordanstown Avenue,
Greenogue Industrial Estate,
Rathcoole, County Dublin
Tel: (01) 401 9340

