

CONTESA

Rectangular steel bath with anti-slip base



DIMENSIONS

Length 1700 mm.

Width 700 mm.

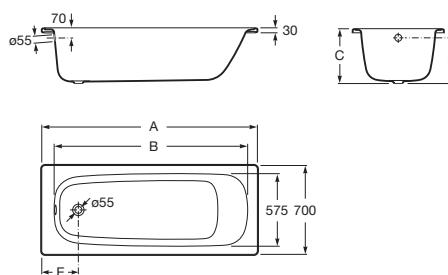
Height 400 mm.

COLOURS AND FINISHES



00 White

TECHNICAL DRAWINGS



FEATURES

Anti-slip type: Added

Capacity (people): 1

Drain: Not included

Installation type: Drop-in, With front panel

Shape: Rectangular

Taphole configuration: 2 tapholes (diameter 36mm)

Water capacity to overflow (l): 195

Contesa

This collection is instantly recognisable because of the femininity of its design and the sobriety of its finish. Refined lines where functionality and elegance go hand in hand in a perfect and thought-provoking balance.

