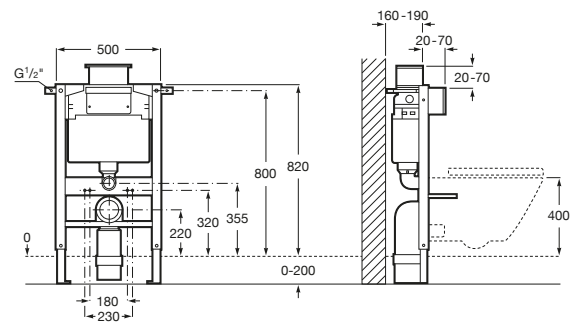


IN-WALL

**Duplo WC L with AG valve (under window)**  
**820mm high concealed cistern and frame for**  
**wall-hung WCs**



TECHNICAL DRAWINGS



FEATURES

Dynamic pressure range: 0,1 - 10 Bar

Elbow connection: DN100 (110 mm), DN90 (90 mm)

Flushing type preset: Dual flush 3/6 litres

Minimum fixation depth (mm): 180

Operating panel position: Frontal, Top

Suitable for: Wall-hung WC

Tank depth (mm): 130

Water inlet position: Lateral

COMPATIBLE WITH



**PLS DUAL - Dual flush  
operating plate for  
concealed cistern**

89009900.



**PL4 DUAL - Dual flush  
operating plate for  
concealed cistern**

89009800.



**PL3 PRO DUAL - Vandal-  
proof stainless steel dual  
flush operating plate for  
concealed cistern**

890097004



**PL2 DUAL - Dual flush  
operating plate for  
concealed cistern**

89009600.



**PL1 DUAL - Dual flush  
operating plate for  
concealed cistern**

89009500.



**PL10 DUAL - Dual flush  
operating plate for  
concealed cistern with matt  
finishes**

89008920.



**PL10 DUAL - Dual flush  
operating plate for  
concealed cistern**

89008900.



**PL7 DUAL - Dual flush  
operating plate for  
concealed cistern**

89008830.



**PL7 DUAL - Dual flush  
operating plate for  
concealed cistern**

89008820.

## In-Wall

Systems that combine efficiency and technology, turning them into solutions that look after the design and adapt perfectly to the space concerned. Innovation and the avant-garde join forces to guarantee the best features, where convenience, saving and style are to be found in every detail.

