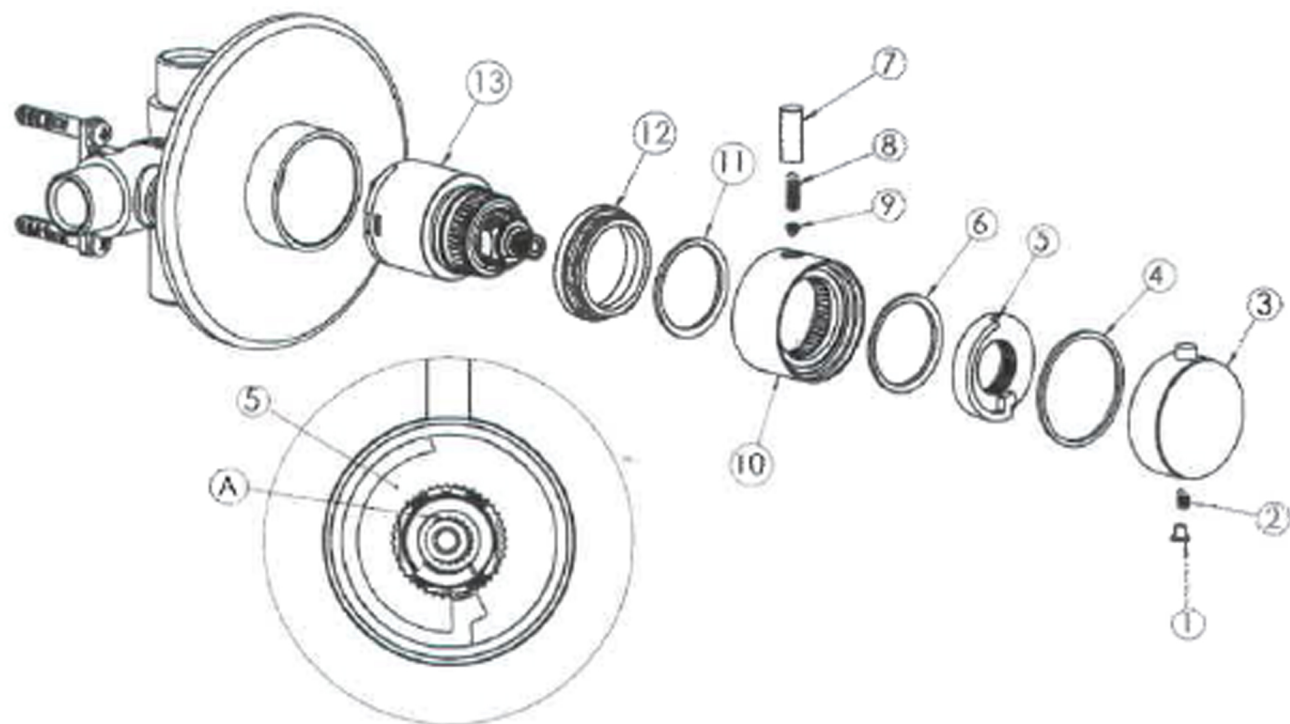


## CARTRIDGE CHANGE AND CLEANING

Through years of use impurities and limescale could restrict flow of water through the filters of the cartridge.

To clean it follow the instructions hereunder :

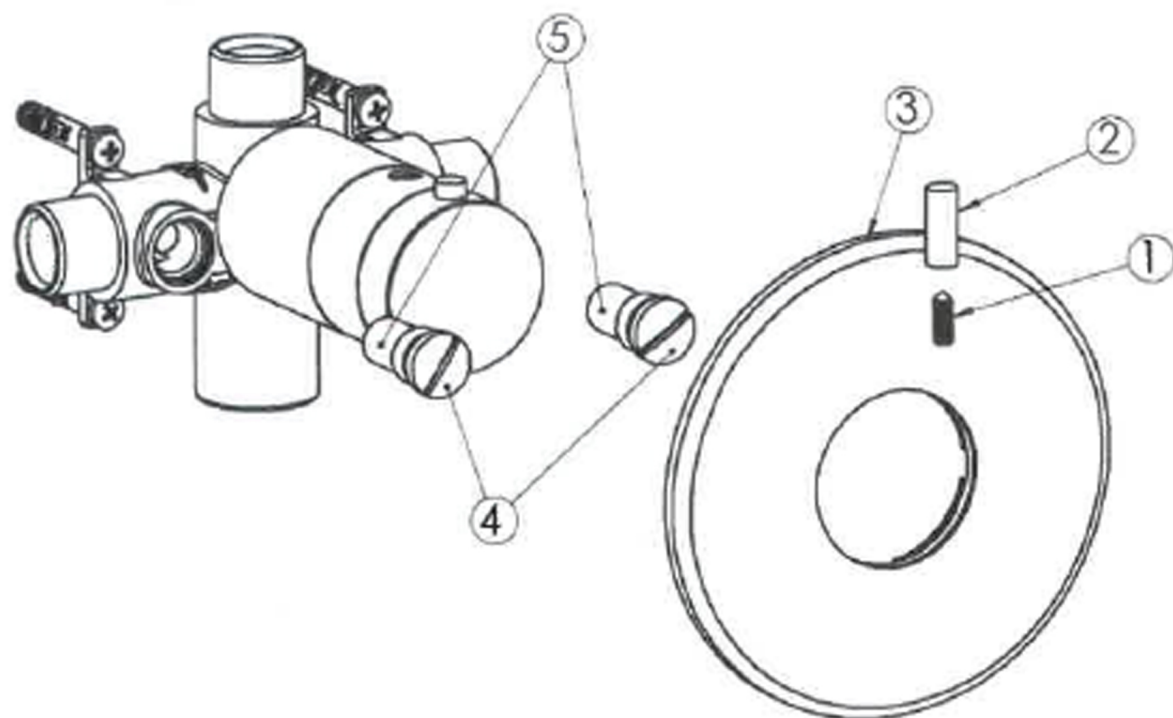
- Shut off water supply to both inlets.
- Remove the cap (1) and the grub screw (2) with an allen key 2 mm and take off the temperature control knob (3).
- Remove the Teflon ring (4), remove the plastic stop (5) and remove the Teflon ring (6).
- Remove the lever (7), the grub screws (8) and (9) with an allen key 2 mm and take off the closure ring (10).
- Remove the Teflon ring (11).
- Unscrew the flange (12) with a 32 mm wrench, and remove the cartridge (13):
- Wash the filters under running water or leave to soak in vinegar or de-scaling agent.
- Follow the above instructions in reverse order for assembly.
- Re-assemble the plastic stop (5) according to the drawing and turn spindle (A) until you reach required temperature 38°C.



## FILTER CLEANING

Through years of use impurities and limescale could restrict flow of water through the filters. To clean it follow the instructions hereunder:

- Shut off water supply to both inlets.
- Unscrew the lever (1) and the grub screws (2) with an Allen key 2 mm.
- Remove the cover plate (3).
- Unscrew the two filter caps (4).
- Remove the filter (5).
- Wash filters under running water or leave them to soak in vinegar or de-scalding agent.
- Follow the above instructions in reverse order for assembly.



## **IMPORTANT – CARE OF YOUR PRODUCT CLEANING**

After use all finishes should be maintained by wiping with a soft, damp, clean cloth and then polished using a dry duster. NO abrasive powder, detergents or polishes should be used. Cleaner containing alcohol, acid or corrosive chemicals should not be used.

## **NOTE**

- ◆ Some household bleaches and denture cleaners can damage plated or coloured finishes and if splashed onto a fitting should be immediately washed off with cold water.
- ◆ If these instructions are followed we believe this fitting will give many years of satisfactory use.
- ◆ We have a policy of continuous improvement and reserve the right to change specification without notice.
- ◆ In case of prolonged disuse of the mixer in winter time, it is recommended to close the system and empty the mixer to avoid damages caused by frost.

## **GUARANTEE**

This shower mixer is guaranteed for a period of 5 years against any defects of materials and workmanship from date of purchase, subject to correct installation, maintenance and use in accordance with this instruction leaflet. Please retain proof of purchase.

During the guarantee period parts will be replaced or repaired at our option. No labour costs will be reimbursed unless prior agreement has been obtained from the factory in writing.

This guarantee is offered as an extra benefit and does not affect your statutory rights as a consumer in any way whatsoever.