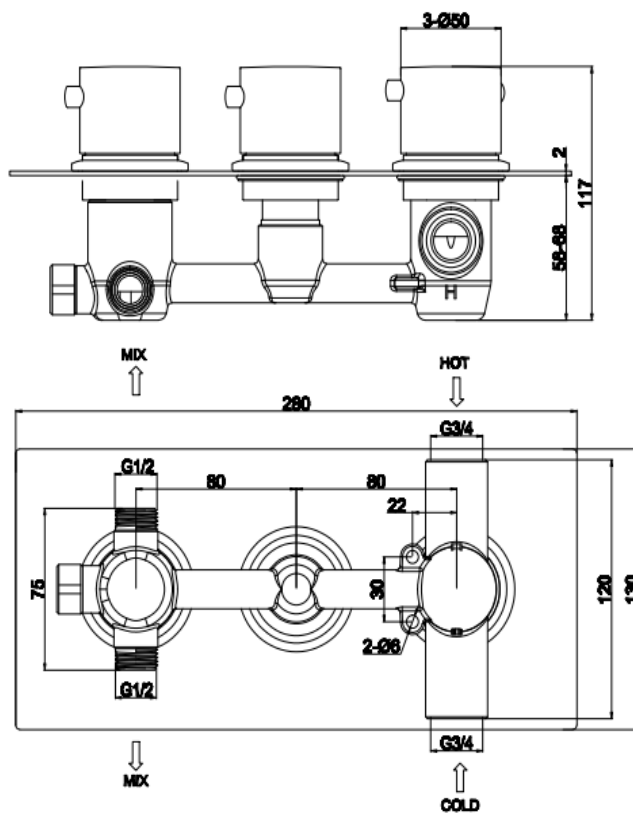


# SAGITTARIUS LTD

## DA277 Thermo Conc Shower Valve SQ Handle 3 way

<b>Barcode</b>	,7081245924620
<b>Product Code</b>	<b>DA277</b>
<b>Construction</b>	Brass Body (CuZn38b18)
<b>Finishes</b>	Chrome plated to BS EN 248
<b>Product Type</b>	Contemporary
<b>Water Pressure</b>	Min.1.0 bar, Max. 7.0 bar
<b>Plumbing Systems</b>	Suitable for all plumbing systems, preferably balanced.Min. supply pressure differential requirement is 5:1
<b>Standards</b>	Complies with BSEN 1111
<b>Certification</b>	Manufactured to comply with TMV2
<b>Cartridge</b>	Thermostatic
<b>Fitting</b>	
<b>Packaging</b>	34.5 x 16 x 17cm / carton (153 carton/pallet 1.2m/1.0m/1.6m )
<b>Guarantee</b>	10 years (3 year on working parts/decorative finish)
<b>Additional Information</b>	1.Temperature: Pre-set 38°C, with push button override to 48°C. 2.Automatic shut off in the event of hot or cold water supply failure.



### Flow Rates (Litres per minute)

System Pressure	0.1 Bar	0.2 Bar	0.3 Bar	0.5 Bar	1.0 Bar	1.5 Bar	2.0 Bar	3.0 Bar	4.0 Bar	5.0 Bar
<b>DA277</b>	2.1	4.3		7.4	11.7		14.4	18.9	-	-

The information contained on this page was correct at date of issue. Fitting dimensions are provided as a guide only. Some variation may occur due to manufacturing tolerances. We pursue a policy of continuing improvement in design and performance of our products and so reserve the right to change specifications without prior notice.