

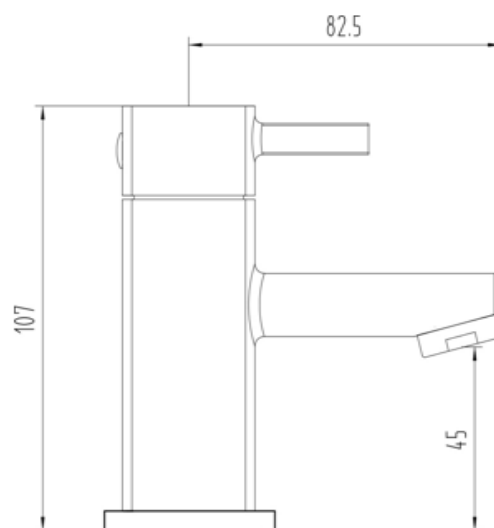
SAGITTARIUS

TAPS & SHOWERING

Construction	Brass Body Zinc alloy Handle
Finishes	Chrome
Product Type	Contemporary
Water Pressure	Min. 0.1 bar, Max. 6.0 bar
Plumbing Systems	Suitable for all plumbing systems
Standards	Complies with BS5412, BS EN200
Certification	-
Cartridge	Ceramic Disc
Net Weight (Tap only)	1237g
Aerator	Laminar spout
Fitting	1/2" BSP
Packaging	31 x 31 x 35cm / carton (10 boxes / carton)
Guarantee	10 years against manufacturing faults (excluding serviceable parts).

AXIS BASIN TAPS CHROME

AX/101/C



Flow Rates (litres per minute)

System Pressure	0.1 Bar	0.2 Bar	0.3 Bar	0.5 Bar	1.0 Bar	1.5 Bar	2.0 Bar	3.0 Bar	4.0 Bar	5.0 Bar
	2.20	4.30	-	7.30	10.40	13.00	15.10	18.50	-	-

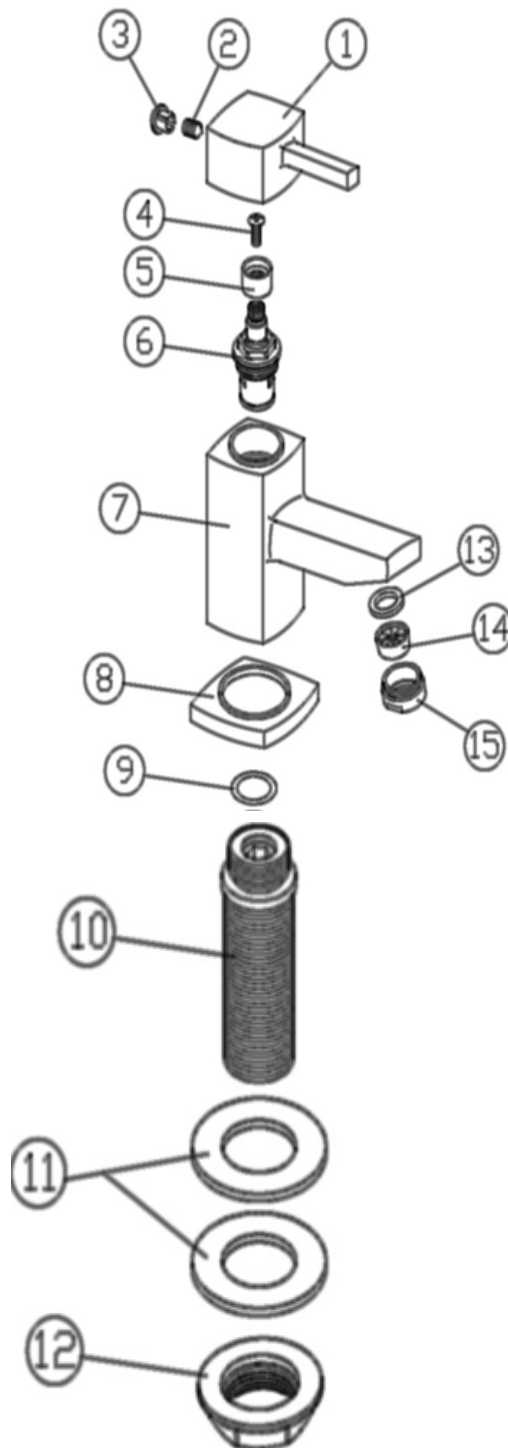
The information contained on this page was correct at the date of issue. Fitting dimensions are provided as a guide only. Some variation may occur due to manufacturing tolerances.

FOR FURTHER ADVICE PLEASE CONTACT :-

SAGITTARIUS LTD UNIT 1 LOWER VICTORIA STREET—CHADDERTON—OLDHAM—OL9 9TU TEL:0616 6202029

EMAIL:TECHNICAL@SAGITTARIUSTAPS.CO.UK

Exploded parts drawing model AX/101/X



NO.	DESCRIPTION	QTY
1	HANDLE	2
2	M10 SCREW	2
3	HANDLE COVER	2
4	M10 SCREW	2
5	PLASTIC CORE	2
6	61/2" CARTRIDGE	2
7	TAP BODY	2
8	BASE PLATE	2
9	O' RING	2
10	61/2" INLET	2
11	61/2" WASHER	4
12	BACK NUT	2
13	10*12.5*2 WASHER	2
14	AERATOR	2
15	NOZZLE	2

The information contained on this page was correct at the date of issue. Fitting dimensions are provided as a guide only. Some variation may occur due to manufacturing tolerances.
We pursue a policy of continuing improvement in design and performance of our products and so reserve the right to change specifications without prior notice

FOR FURTHER ADVICE PLEASE CONTACT :-
SAGITTARIUS LTD UNIT 1 LOWER VICTORIA STREET—CHADDERTON—OLDHAM—OL9 9TU TEL:0616 6202029
EMAIL:TECHNICAL@SAGITTARIUSTAPS.CO.UK