

SAGITTARIUS

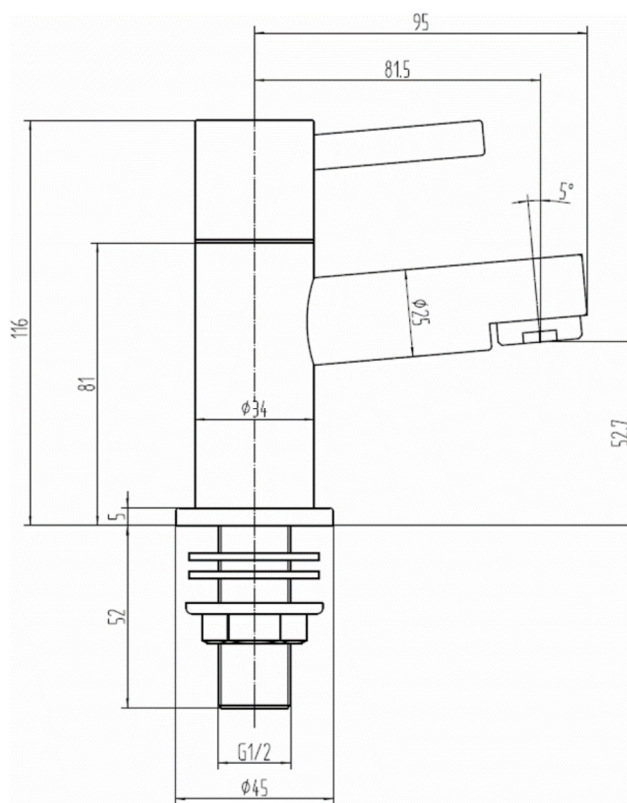
TAPS & SHOWERING

PIAZA BATH TAPS

CHROME

PI/102/C

| | |
|------------------------------|---|
| Construction | Brass Body CuZn40Pb2, EN CW617N (equivalent to BS CZ122) Zinc alloy handle |
| Finishes | Chrome plated to BS EN 248 |
| Product Type | Contemporary |
| Water Pressure | Min. 0.1 bar, Max. 6.0 bar |
| Plumbing Systems | Suitable for all plumbing systems |
| Standards | Complies with BS5412, BS EN200 |
| Certification | - |
| Cartridge | 1/4 Turn 3/4" Ceramic Disc Valves |
| Net Weight (Tap only) | 1149g |
| Aerator | Laminar spout |
| Fitting | 1/2" BSP |
| Packaging | 33.5 x 30.5 x 34.5cm / carton (10 boxes / carton) |
| Guarantee | 10 years against manufacturing faults (excluding serviceable parts). |



Flow Rates (Litres per minute)

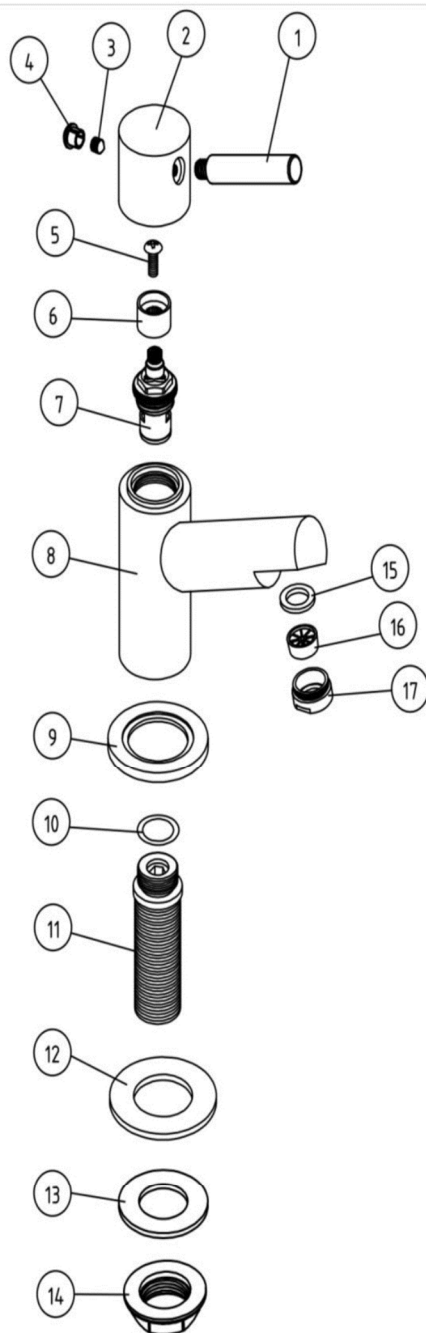
| System Pressure | 0.1 Bar | 0.2 Bar | 0.3 Bar | 0.5 Bar | 1.0 Bar | 1.5 Bar | 2.0 Bar | 3.0 Bar | 4.0 Bar | 5.0 Bar |
|-----------------|---------|---------|---------|---------|---------|---------|---------|---------|---------|---------|
| PI/102/C | 4.7 | 7.4 | - | 9.5 | 14.5 | 17.6 | 20.2 | 23.5 | - | - |

The information contained on this page was correct at the date of issue. Fitting dimensions are provided as a guide only. Some variation may occur due to manufacturing tolerances. We pursue a policy of continuing improvement in design and performance of our products and so reserve the right to change specifications without prior notice

FOR FURTHER ADVICE PLEASE CONTACT :-

SAGITTARIUS LTD UNIT 1 LOWER VICTORIA STREET—CHADDERTON—OLDHAM—OL9 9TU TEL:0616 6202029

EMAIL:TECHNICAL@SAGITTARIUSTAPS.CO.UK



| NO | NAME | QTY |
|----|----------------|--------|
| 1 | HANDLE LEVER | 2 |
| 2 | HANDLE | 2 |
| 3 | GRUB SCREW | 2 |
| 4 | CAP | 2 |
| 5 | SCREW | 2 |
| 6 | PVC CORE | 2 |
| 7 | 1/2" CARTRIDGE | 1 PAIR |
| 8 | TAP BODY | 2 |
| 9 | BASE PLATE | 2 |
| 10 | "O" RING | 2 |
| 11 | 1/2" BSP TAIL | 2 |
| 12 | O-RING | 2 |
| 13 | O-RING | 2 |
| 14 | BACKNUT | 2 |
| 15 | O-RING | 2 |
| 16 | AERATOR | 2 |
| 17 | NOZZEL | 2 |

The information contained on this page was correct at the date of issue. Fitting dimensions are provided as a guide only. Some variation may occur due to manufacturing tolerances.
We pursue a policy of continuing improvement in design and performance of our products and so reserve the right to change specifications without prior notice

FOR FURTHER ADVICE PLEASE CONTACT :-
SAGITTARIUS LTD UNIT 1 LOWER VICTORIA STREET—CHADDERTON—OLDHAM—OL9 9TU TEL:0616 6202029
EMAIL:TECHNICAL@SAGITTARIUSTAPS.CO.UK