

SAGITTARIUS

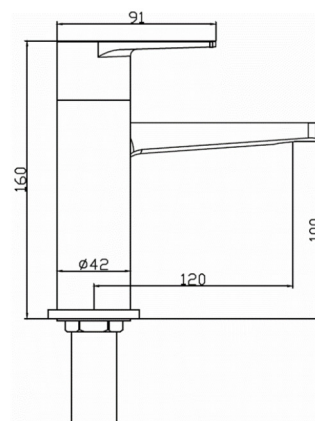
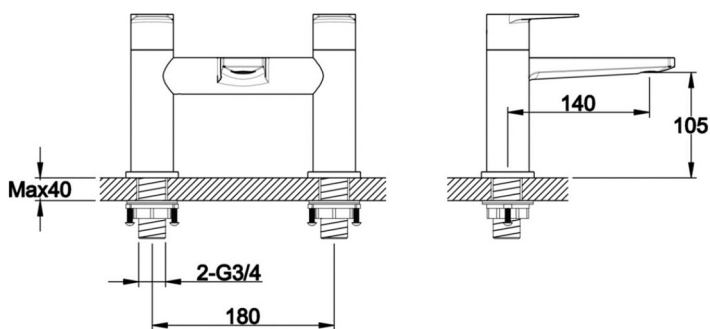
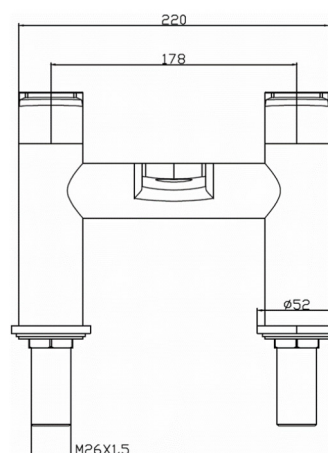
TAPS & SHOWERING

Construction	Brass Body CuZn40Pb2, EN CW617N (equivalent to BS CZ122); Zinc alloy handle
Finishes	Chrome : Ni : 8-12um, Cr : 0.25-0.3um
Product Type	Contemporary
Water Pressure	Min. 0.5 bar, Max. 5.0 bar
Plumbing Systems	Suitable for all plumbing systems
Standards	Complies with BS5412, BS EN200
Certification	Manufactured to comply with WRAS (1709044)
Cartridge	1/4 Turn 1/2" Ceramic Disc Valves
Spout	Neoperl aerator
Fitting	Brass 3/4" BSP Tails
Packaging	50x29.5x38cm/(4 boxes / carton), Net weight: 3.07kg /pcs
Guarantee	10 years against manufacturing faults (excluding serviceable parts).

BARI BATH

FILLER CHROME

BA/104/C



Flow Rates (Litres per minute)

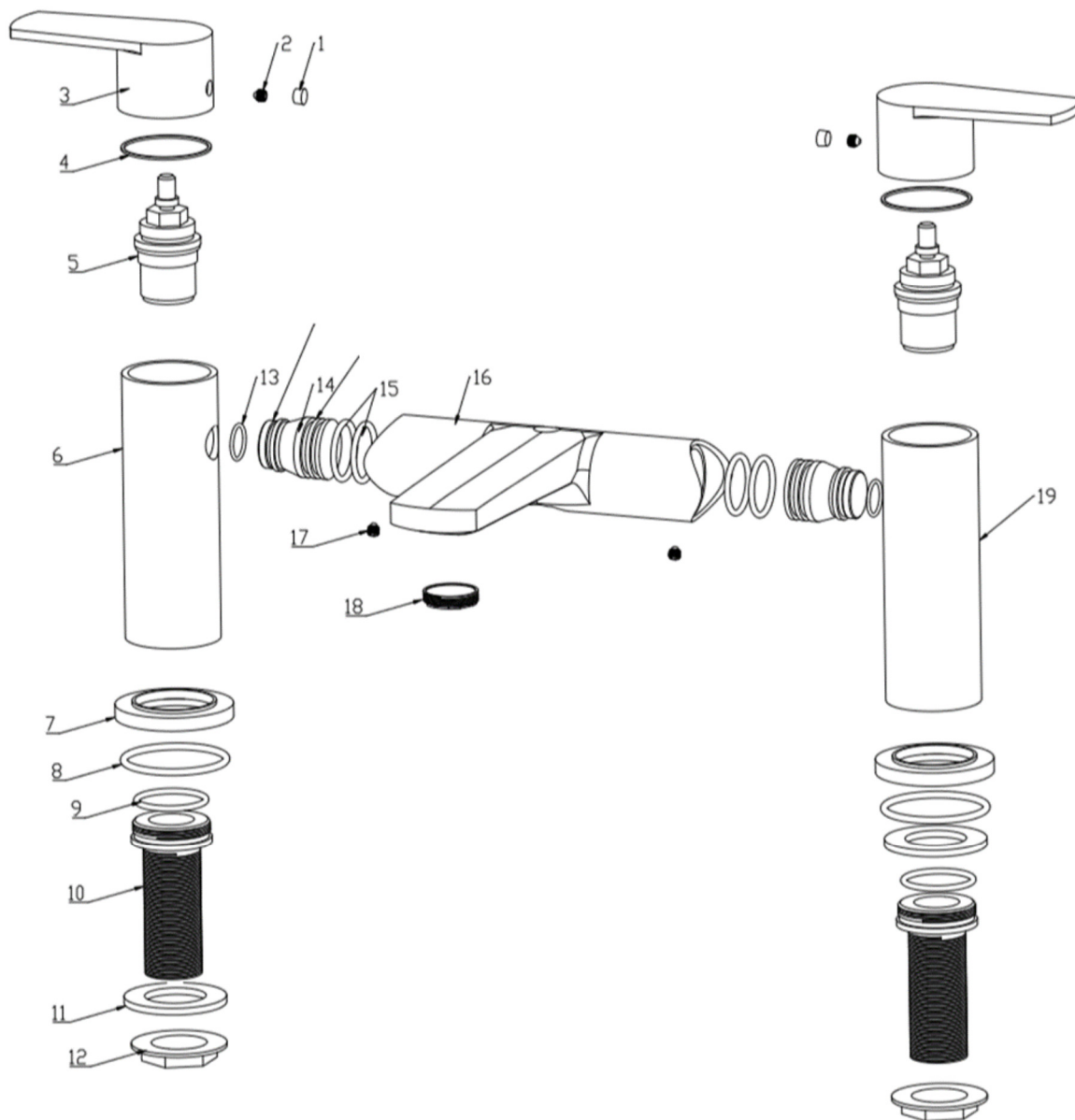
System Pressure	0.1 Bar	0.2 Bar	0.3 Bar	0.5 Bar	1.0 Bar	1.5 Bar	2.0 Bar	3.0 Bar	4.0 Bar	5.0 Bar
BA/104/C	3.00	5.00	-	10.10	15.20	-	21.30	26.40	-	-

The information contained on this page was correct at the date of issue. Fitting dimensions are provided as a guide only. Some variation may occur due to manufacturing tolerances. We pursue a policy of continuing improvement in design and performance of our products and so reserve the right to change specifications without prior notice

FOR FURTHER ADVICE PLEASE CONTACT :-

SAGITTARIUS LTD UNIT 1 LOWER VICTORIA STREET—CHADDERTON—OLDHAM—OL9 9TU TEL:0616 6202029

EMAIL:TECHNICAL@SAGITTARIUSTAPS.CO.UK



10	BSP TAIL	2			
9	O-RING	2	19	RIGHT PILLAR	1
8	O-RING	2	18	AERATOR	1
7	BASE PLATE	2	17	SCREW	2
6	LEFT PILLAR	1	16	TAP BODY	1
5	CARTRIDGE	2	15	O-RING	4
4	RUBBER GASKET	2	14	CONNECTOR	2
3	HANDLE	2	13	O-RING	2
2	SCREW	2	12	LOCK NUT	2
1	COVER	2	11	WASHER	2
No.	DESCRIPTION	QTY	No.	DESCRIPTION	QTY

The information contained on this page was correct at the date of issue. Fitting dimensions are provided as a guide only. Some variation may occur due to manufacturing tolerances. We pursue a policy of continuing improvement in design and performance of our products and so reserve the right to change specifications without prior notice

FOR FURTHER ADVICE PLEASE CONTACT :-

SAGITTARIUS LTD UNIT 1 LOWER VICTORIA STREET—CHADDERTON—OLDHAM—OL9 9TU TEL:0616 6202029

EMAIL:TECHNICAL@SAGITTARIUSTAPS.CO.UK