

SAGITTARIUS

TAPS & SHOWERING

Construction Brass Body & Cover (H58), Stainless steel, Polyethylene Pipe, Polypropylene & POM

Finishes Chrome plated to BS EN 248

Product Type Contemporary

Water Pressure Tested Between Standards Min. 1.0 bar, Max. 6.0 bar

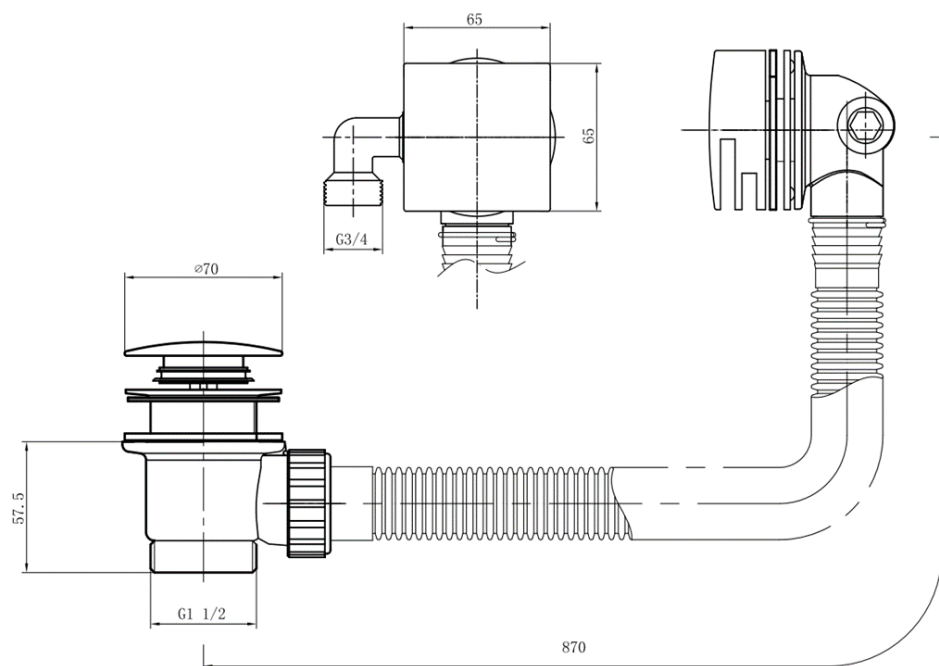
Complies with BS EN 200

Fitting Inlet: Brass G3/4" BSP Male thread;
Waste: PP G1-1/2" BSP Male thread

Guarantee 1 year against manufacturing faults (excluding serviceable parts)

Additional Information Centre to centre length : 85cm; suitable for Bathtub with 5-17mm thickness

MINIMAL CUBE BATH CENTRA-FILL WASTE CHROME
WBT/431/C



The information contained on this page was correct at the date of issue. Fitting dimensions are provided as a guide only. Some variation may occur due to manufacturing tolerances. We pursue a policy of continuing improvement in design and performance of our products and so reserve the right to change specifications without prior notice

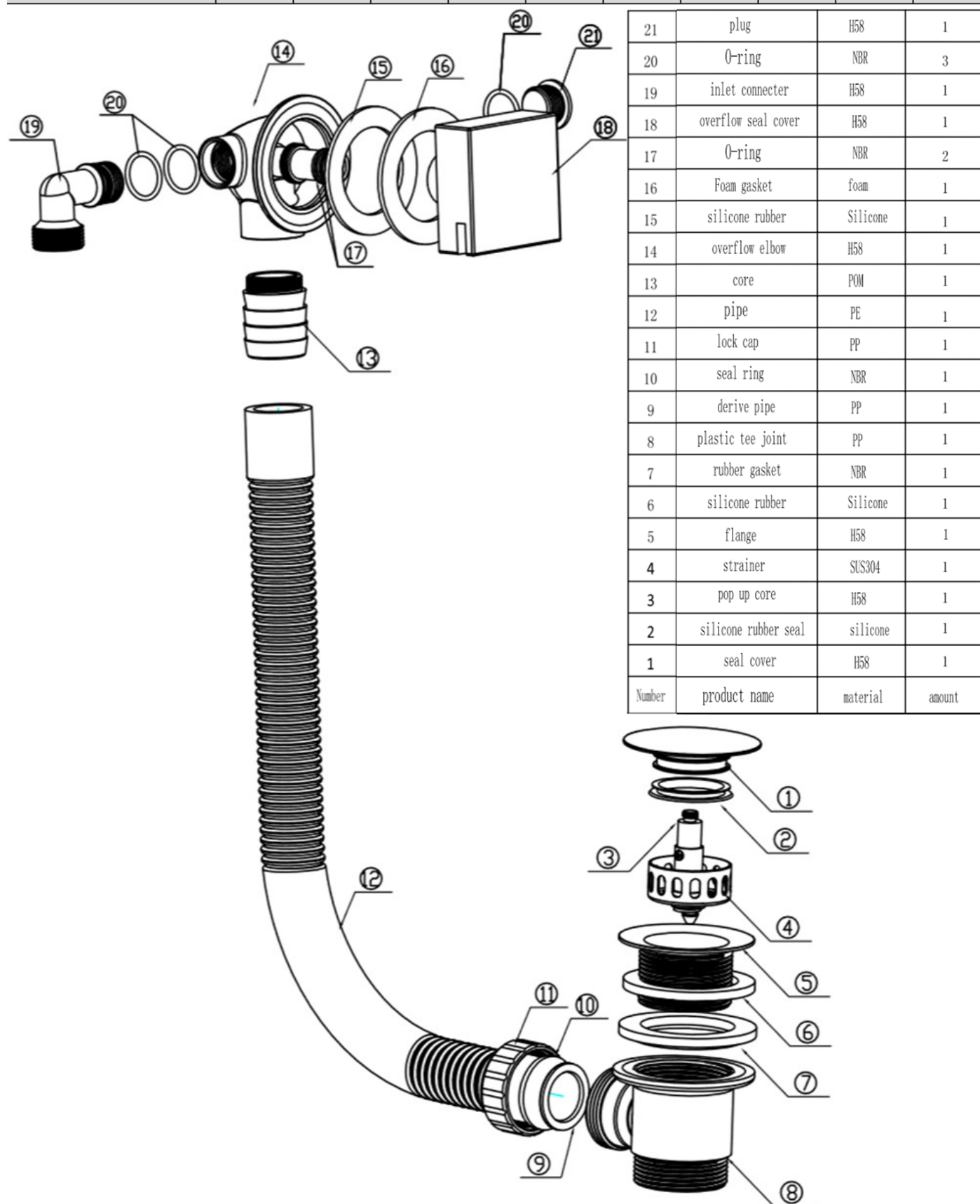
FOR FURTHER ADVICE PLEASE CONTACT :-

SAGITTARIUS LTD UNIT 1 LOWER VICTORIA STREET—CHADDERTON—OLDHAM—OL9 9TU TEL:0616 6202029

EMAIL:TECHNICAL@SAGITTARIUSTAPS.CO.UK

Flow Rates (Litres per minute)

System Pressure	0.1 Bar	0.2 Bar	0.3 Bar	0.5 Bar	1.0 Bar	1.5 Bar	2.0 Bar	3.0 Bar	4.0 Bar	5.0 Bar
	-	6.1	-	10.5	15.3	-	21.7	26.6	-	-



FOR FURTHER ADVICE PLEASE CONTACT :-

SAGITTARIUS LTD UNIT 1 LOWER VICTORIA STREET—CHADDERTON—OLDHAM—OL9 9TU TEL:0616 6202029

EMAIL:TECHNICAL@SAGITTARIUSTAPS.CO.UK