

SAGITTARIUS

TAPS & SHOWERING

Construction
Finishes
Product Type

Brass Body (CuZn40Pb18)
Chrome plated to BS EN 248
Contemporary

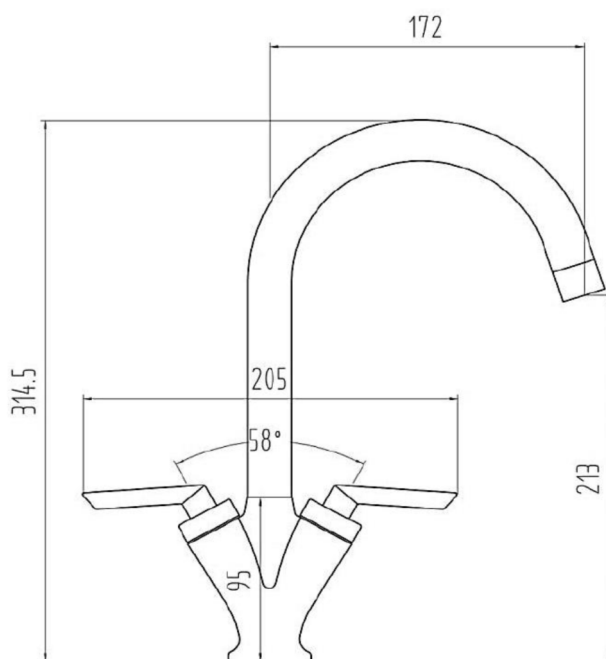
CODA LEVER MONOBLOC

SINK MIXER CHROME

CO/156/C

Standards
Certification
Cartridge
Fitting
Packaging
Guarantee

Complies with BS5412, BS EN200
Manufactured to comply with WRAS
1/4 Turn 1/2" Ceramic Disc Valves
M10 x 15mm flexible connection pipes
45.5 x 37 x 29.5cm / carton (10 boxes / carton)
10 years against manufacturing faults (excluding serviceable parts).
3 years serviceable parts, 1 year on Black or Nickle plating



The information contained on this page was correct at the date of issue. Fitting dimensions are provided as a guide only. Some variation may occur due to manufacturing tolerances.
We pursue a policy of continuing improvement in design and performance of our products and so reserve the right to change specifications without prior notice

FOR FURTHER ADVICE PLEASE CONTACT :-

SAGITTARIUS LTD UNIT 1 LOWER VICTORIA STREET—CHADDERTON—OLDHAM—OL9 9TU TEL:0616 6202029

EMAIL:TECHNICAL@SAGITTARIUSTAPS.CO.UK