

# SAGITTARIUS

## TAPS & SHOWERING

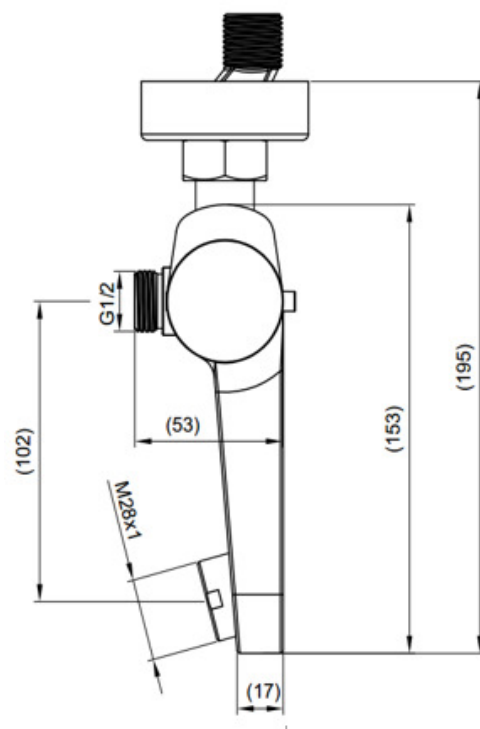
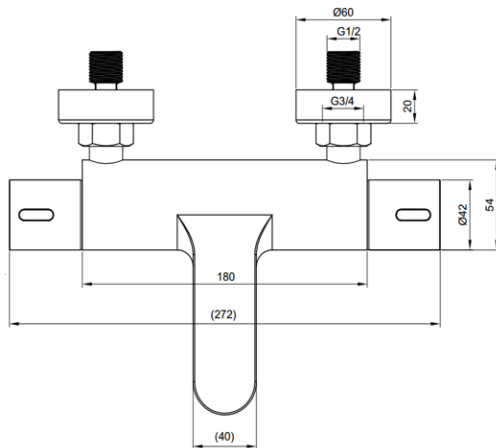
**Construction**  
**Finishes**  
**Product Type**

Brass Body (CuZn38Pb18); Zinc alloy handle  
Chrome plated to BS EN 248  
Contemporary

**Standards**  
**Certification**  
**Check Valve**  
**Aerator**  
**Cartridge**  
**Fitting**  
**Packaging**  
**Guarantee**  
**Additional Information**

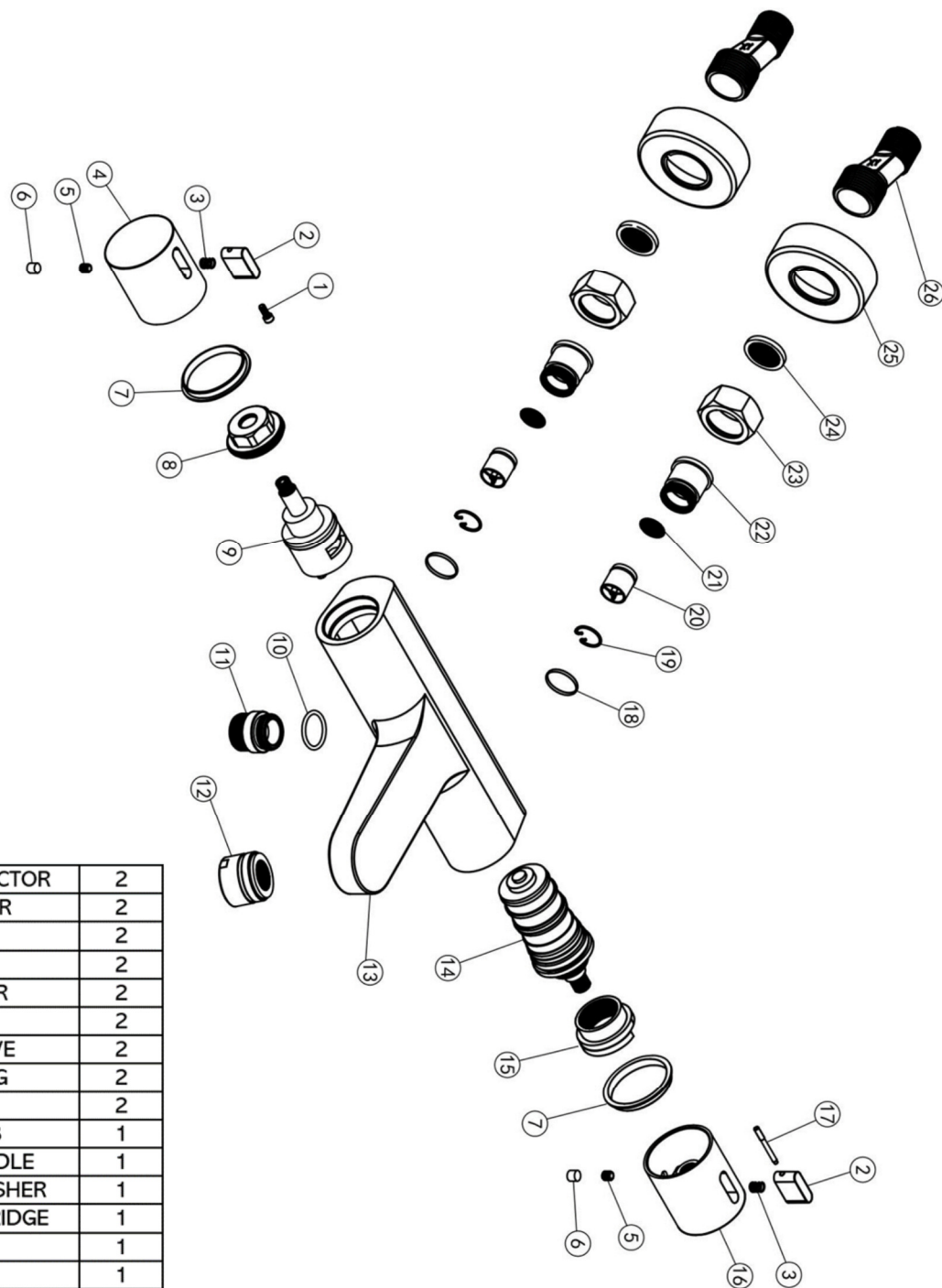
Complies with BSEN 1111  
-  
0.5-10 gpm  
Neoperl Aerator  
Thermostatic, Integrate diverter ceramic disc valve  
Easy fit  
55 x 35 x 35cm / carton (8 boxes / carton)  
10 years against manufacturing faults (excluding serviceable parts).  
1. Temperature: Pre-set 38°C, with push button override to 48°C.  
2. Automatic shut off in the event of hot or cold water supply failure.

## MESSINO THERMOSTATIC BATH SHOWER MIXER ME/198/C



The information contained on this page was correct at the date of issue. Fitting dimensions are provided as a guide only. Some variation may occur due to manufacturing tolerances.  
We pursue a policy of continuing improvement in design and performance of our products and so reserve the right to change specifications without prior notice

FOR FURTHER ADVICE PLEASE CONTACT :-  
SAGITTARIUS LTD UNIT 1 LOWER VICTORIA STREET—CHADDERTON—OLDHAM—OL9 9TU TEL:0616 6202029  
EMAIL:TECHNICAL@SAGITTARIUSTAPS.CO.UK



26	OFFSET-CONNECTOR	2
25	WALL-COVER	2
24	WASHER	2
23	NUT	2
22	CONNECTOR	2
21	FILTER	2
20	CHECK VALVE	2
19	CALMP-RING	2
18	O-RING	2
17	LEVER ROB	1
16	THERMO-HANDLE	1
15	MOUNTING WASHER	1
14	THERMO-CARTRIDGE	1
13	BODY	1
12	AERATOR	1
11	CONNECTOR	1
10	O-RING	1
9	DIVERTER	1
8	NUT	1
7	WASHER	2
6	CAP	2
5	GRUB	2
4	FLOW HANDLE	1
3	SPRING	2
2	BUTTON	2
1	SCREW	1
No.	DESCRIPTION	QTY

The information contained on this page was correct at the date of issue. Fitting dimensions are provided as a guide only. Some variation may occur due to manufacturing tolerances.  
We pursue a policy of continuing improvement in design and performance of our products and so reserve the right to change specifications without prior notice

FOR FURTHER ADVICE PLEASE CONTACT :-  
SAGITTARIUS LTD UNIT 1 LOWER VICTORIA STREET—CHADDERTON—OLDHAM—OL9 9TU TEL:0616 6202029  
EMAIL:TECHNICAL@SAGITTARIUSTAPS.CO.UK