

# SAGITTARIUS

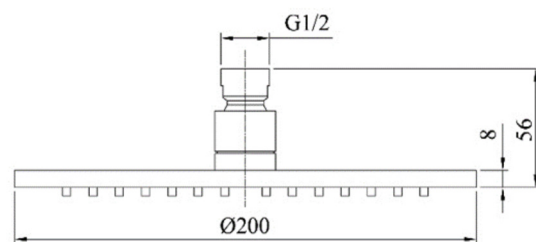
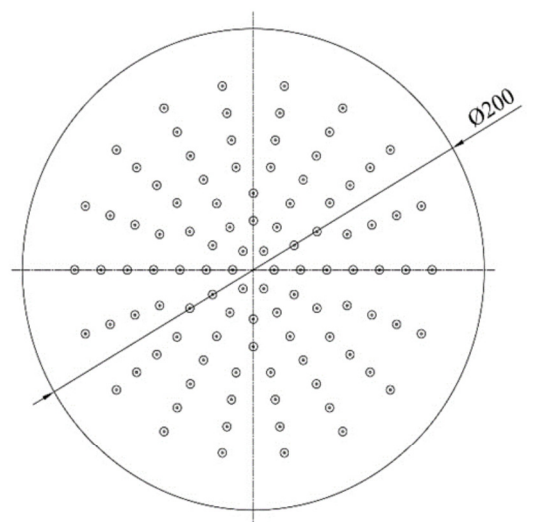
## TAPS & SHOWERING

**Construction** Brass (CuZn38Pb18)  
**Finishes** Chrome plated to BS EN 248  
**Product Type** Contemporary

**Certification** Manufactured to comply with WRAS  
**Size** Ø200mm  
**Fitting** G1/2"  
**Packaging** 45x24x40cm/carton(10pcs), Box size: 22x22x8.5cm, Weight: 0.98kg  
**Guarantee** 1 year against manufacturing faults (excluding serviceable parts).  
**Additional Information** 1. Rub-clean rubber nozzle  
2. 100% Chromed  
3. Swivel connector

DRENCH 200mm FIXED  
HEAD & ARM CHROME

SH/348/C



Ø200\*8mm

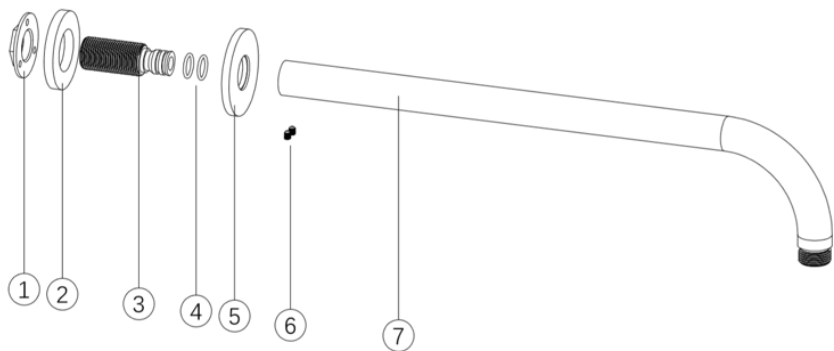
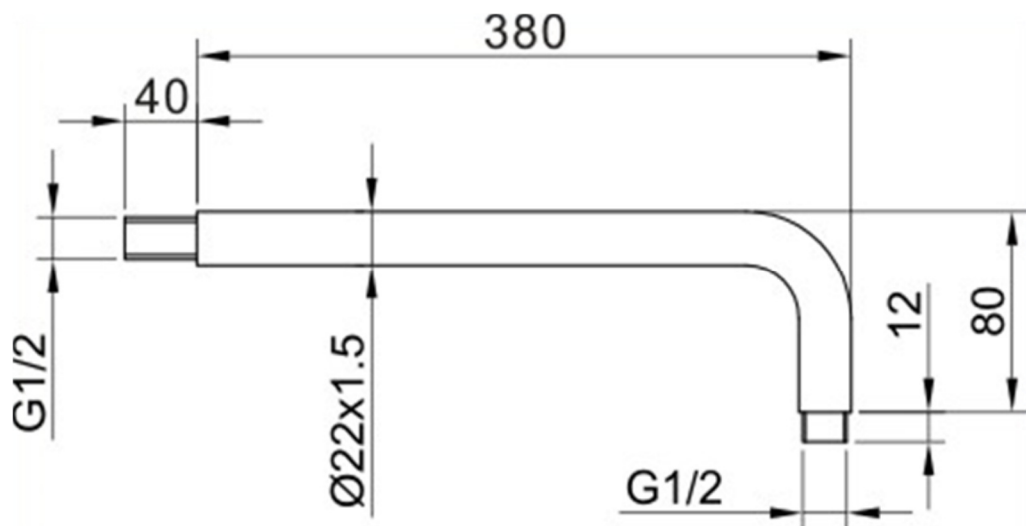
The information contained on this page was correct at the date of issue. Fitting dimensions are provided as a guide only. Some variation may occur due to manufacturing tolerances. We pursue a policy of continuing improvement in design and performance of our products and so reserve the right to change specifications without prior notice

FOR FURTHER ADVICE PLEASE CONTACT :-

SAGITTARIUS LTD UNIT 1 LOWER VICTORIA STREET—CHADDERTON—OLDHAM—OL9 9TU TEL:0616 6202029

EMAIL:TECHNICAL@SAGITTARIUSTAPS.CO.UK

Construction	Brass Body (CuZn38Pb18)
Finishes	Chrome plated to BS EN 248
Product Type	Contemporary
Plumbing Systems	Suitable for all plumbing systems
Certification	-
Fitting	G1/2" BSP
Packaging	53.5 x 47 x 38cm / carton (50 boxes / carton)
Guarantee	5 years against manufacturing faults (excluding serviceable parts).



7	BODY	1
6	SCREW	2
5	BASE PLATE	1
4	O-RING	2
3	CONNECTOR	1
2	WASHER	1
1	BACK NUT	1
No.	DESCRIPTION	QTY

The information contained on this page was correct at the date of issue. Fitting dimensions are provided as a guide only. Some variation may occur due to manufacturing tolerances. We pursue a policy of continuing improvement in design and performance of our products and so reserve the right to change specifications without prior notice