

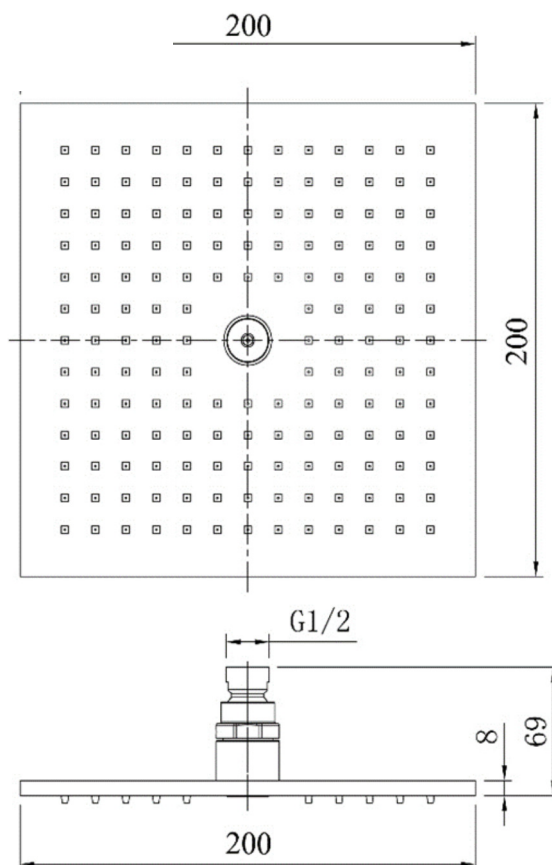
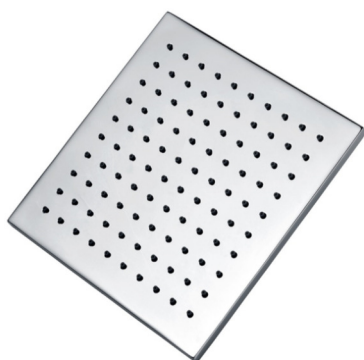
SAGITTARIUS

TAPS & SHOWERING

Construction Brass Body (CuZn38Pb18)
Finishes Chrome plated to BS EN 248
Product Type Contemporary

**EVOLUTION 200mm FIXED
HEAD & ARM CHROME
SH/358/C**

Certification -
Size 200 x 200mm
Fitting G1/2"
Packaging 45.5 x 44 x 24.5cm / carton (10 boxes / carton)
Guarantee 1 year against manufacturing faults (excluding serviceable parts).
Additional Information 1. Rub-clean rubber nozzle
2. 100% Chromed
3. Swivel connector

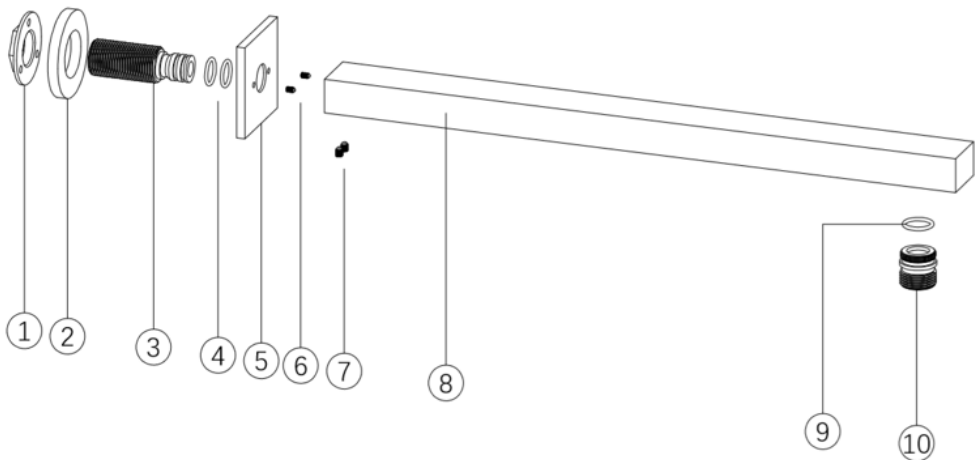
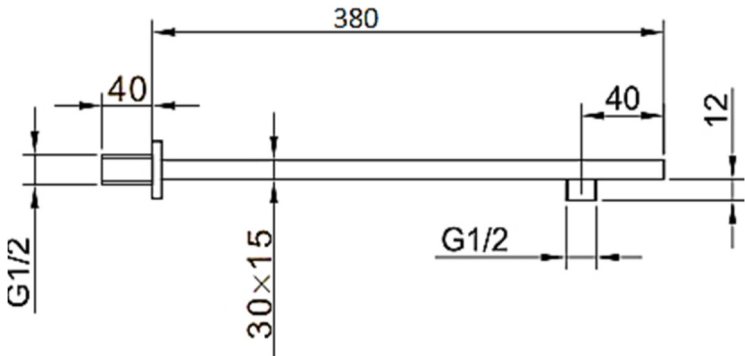


The information contained on this page was correct at the date of issue. Fitting dimensions are provided as a guide only. Some variation may occur due to manufacturing tolerances.
We pursue a policy of continuing improvement in design and performance of our products and so reserve the right to change specifications without prior notice

FOR FURTHER ADVICE PLEASE CONTACT :-

SAGITTARIUS LTD UNIT 1 LOWER VICTORIA STREET—CHADDERTON—OLDHAM—OL9 9TU TEL:0616 6202029
EMAIL:TECHNICAL@SAGITTARIUSTAPS.CO.UK

Construction	Brass Body (CuZn38Pb18)
Finishes	Chrome plated to BS EN 248
Product Type	Contemporary
Plumbing Systems	Suitable for all plumbing systems
Certification	-
Fitting	G1/2" BSP
Packaging	73 x 48 x 37cm / carton (50 boxes / carton)
Guarantee	5 years against manufacturing faults (excluding serviceable parts).



10	SHOWER CONNECTOR	1
9	O-RING	1
8	BUDY	1
7	SCREW	2
6	SCREW	2
5	BASE PLATE	1
4	O-RING	2
3	CONNECTOR	1
2	WASHER	1
1	BACK NUT	1
No.	DESCRIPTION	QTY

The information contained on this page was correct at the date of issue. Fitting dimensions are provided as a guide only. Some variation may occur due to manufacturing tolerances. We pursue a policy of continuing improvement in design and performance of our products and so reserve the right to change specifications without prior notice