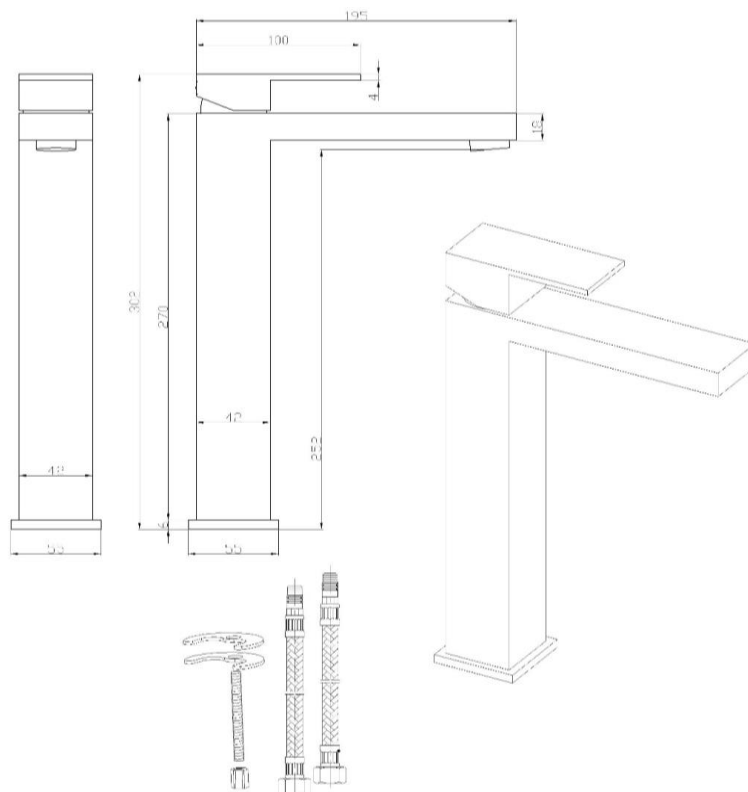
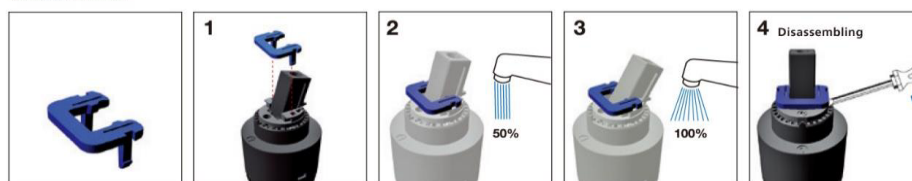


TECHNICAL DATA SHEET

BL109 Tall Basin Mono Mixer Inc. Sprung Waste

Barcode	7081248177047
Product Code	BL109
Construction	Brass Body CuZn40Pb2, EN CW617N (equivalent to BS CZ122)
Finishes	Chrome plated to BS EN 248
Product Type	Contemporary
Water Pressure	Min. 0.2 bar, Max. 6.0 bar
Plumbing Systems	Suitable for all plumbing systems
Standards	Complies with BS5412, BS EN200
Certification	Manufactured to comply with WRAS
Cartridge	35mm Triduon ceramic disc cartridge
Aerator	Neoperl Adjustable Slim Air
Fitting	M10 x 350mm ½" BSP Female Flexi Tails
Packaging	46 x 28.5 x 34.5cm / carton (8 boxes / carton)
Guarantee	10 years against manufacturing faults (excluding serviceable parts).
Additional Information	1.Supplied with G 1¼" sprung waste 2.Incorporates water saving optional feature : Triduon Volume Limiter

Volume Limiter



Flow Rates (Litres per minute)

System Pressure	0.1 Bar	0.2 Bar	0.3 Bar	0.5 Bar	1.0 Bar	1.5 Bar	2.0 Bar	3.0 Bar	5.0 Bar
BL109	2.8	4.1	5.1	7.1	10.1	12.6	14.8	17.9	-