

Installation and operation instruction

I. Installation Notice

1. Floor drain should be installed in the location of the tap.
2. Flush pipes to get rid of any debris blocked in pipes before installation.
3. After installation, turn all the joints to make sure they are firmly connected. Then turn water on and off repeatedly to ensure there are no leaks around the joints then the product can be used normally at this stage.

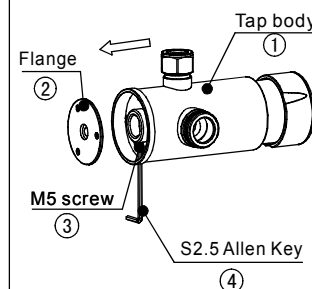
II. Operation Notice

1. The product is used between water pressure 0.5 to 5bar, water temperature 0-70°C.
2. **Installed 2 pcs $\phi 15$ brass tubes and the centre-to-centre spacing is 150mm (as figure 2).**
3. Regularly clean the tap with soft damp cloth.
4. Read all the instructions completely before proceeding.

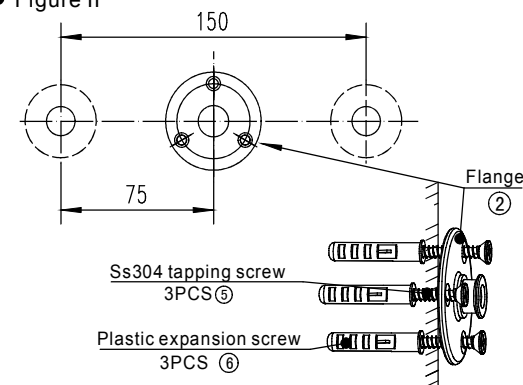
III. Installing steps (Figure II)

1. Revolve (3) M5 screw by S2.5 Allen Key, take (2) fixed tray apart from the tap body (As figure 1).
2. Using 3 pcs Ss304 tapping screws fixed (2) fixed tray on the wall (notice the inlet tube position of two ends (as picture 2)).
3. put (9) rubber washer into (8) lock nut, then screw onto (1) the tap body (notice 7# inlet elbow direction, as figure 3).
4. put 2 pcs 12# Decorative covers on to Out-flow elbow, then put 10# 11# on to $\phi 15$ tube respectively which was installed in advance. put the tap body to 2# fixed tray, adjusted right direction and location, screw tight 10# and 8# brass nuts by wrench. Finally, use S2.5 Allen Key revolve M5 fixed screw, make the faucet body fixed on 2# fixed tray, (As figure 4)
5. Use one end of $\phi 15$ brass tube traverse 13, 14, the other end passes through the 16, 17, and then use handle screw the 14 copper nut to the faucet body; screw 17# copper nut to Shower body. Draw flange position on the wall by mark pen, then screw Shower body out from Flange and 13, 16, 17.
6. With three 6# Plastic expansion screw and three Flanges 5# Ss304 tapping screw to fixed flange on the wall, then the Shower body is mounted to the 13, 16, 17 #, the height is adjusted, the Shower body into Flange, S2.5 Allen Key turn the M5 screws fixed Shower body. At last, with the spanner to screw tight 14, 17 (as figure 5).

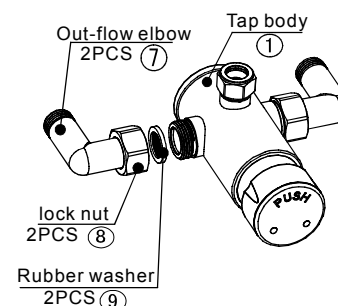
● Figure I



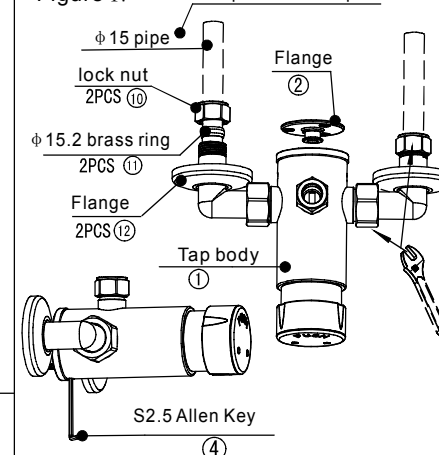
● Figure II



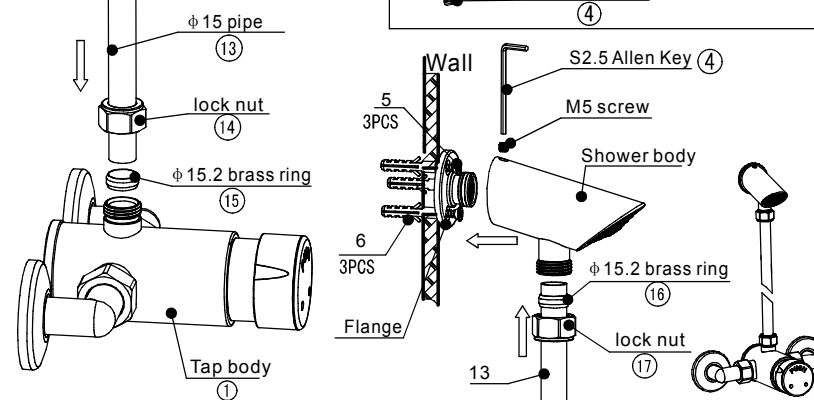
● Figure III



● Figure IV



● Figure V

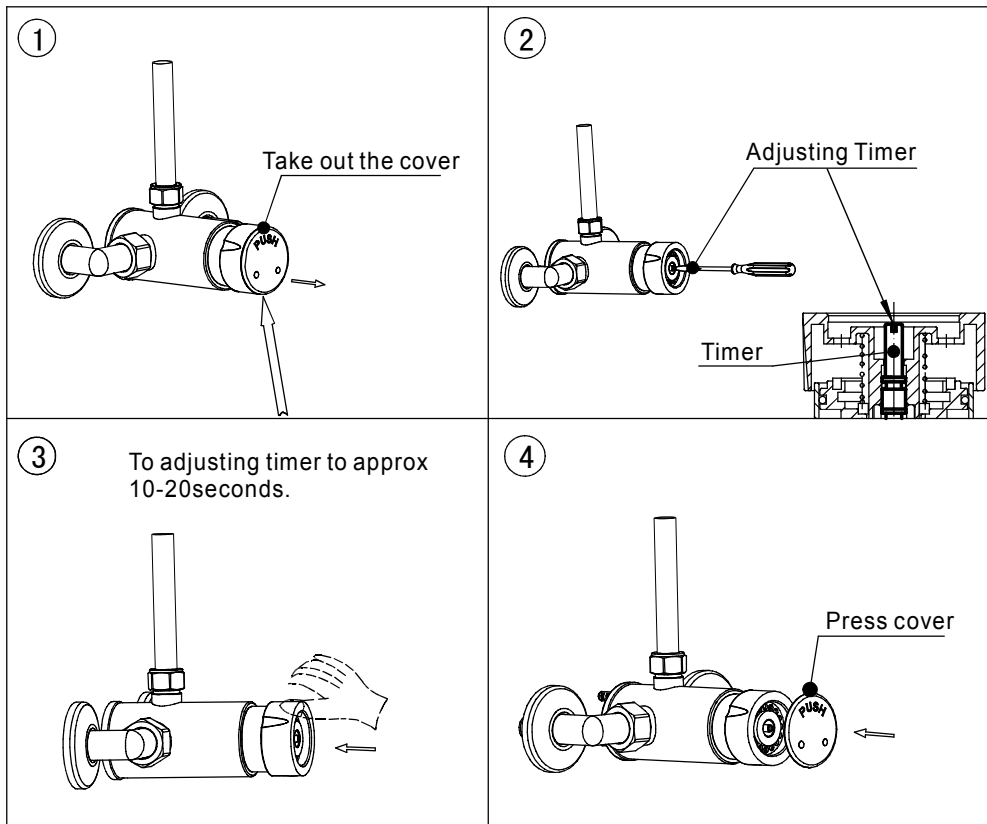


Installation and Maintenance instruction

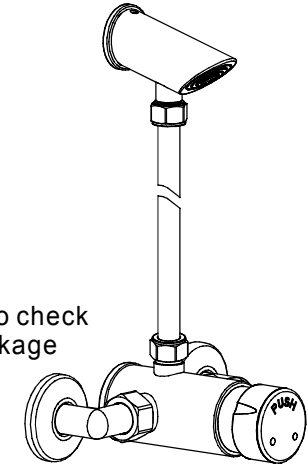
Technical Information:

- Flow Rate: 0.24L/S in 10 Sec /2 Bar
- Max. Working Pressure: 6 Bar
- Min .Working Pressure: 0.2-0.3 Bar.
- Cut Off Times : 10-30 Sec / 2Bar
- Max Working Temperature: 60 Degrees Celcius Between Max.

Note : Follow below steps for adjust shut water time.



7. Turn on water supply value and handle to check all the joints to make sure there is no leakage and the product can work normally.



Follow the steps below for regular clean or maintenance !

