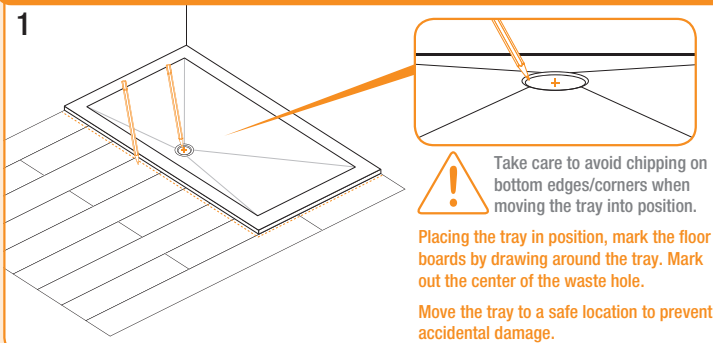
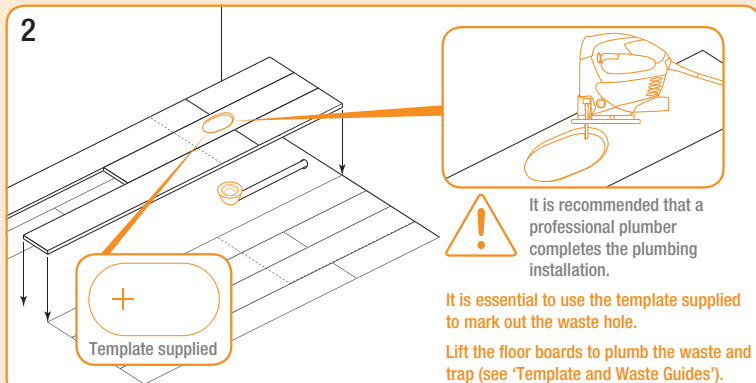


FITTING INSTRUCTIONS - WOOD FLOOR

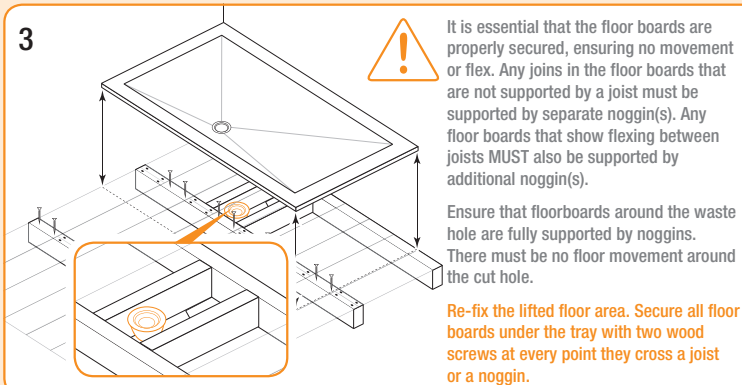
1



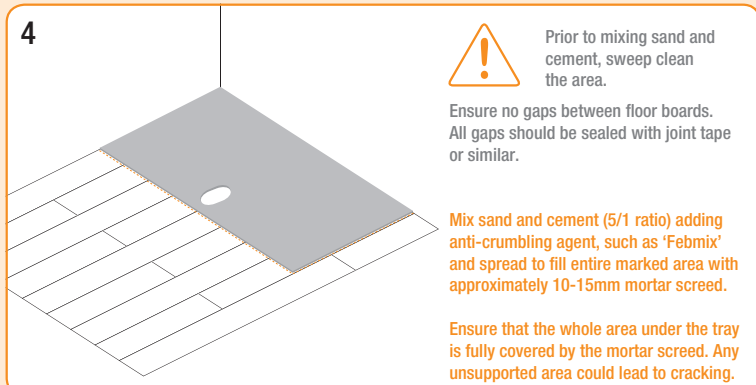
2



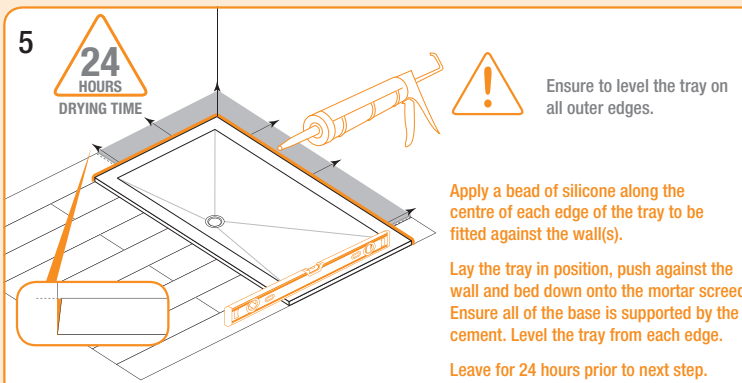
3



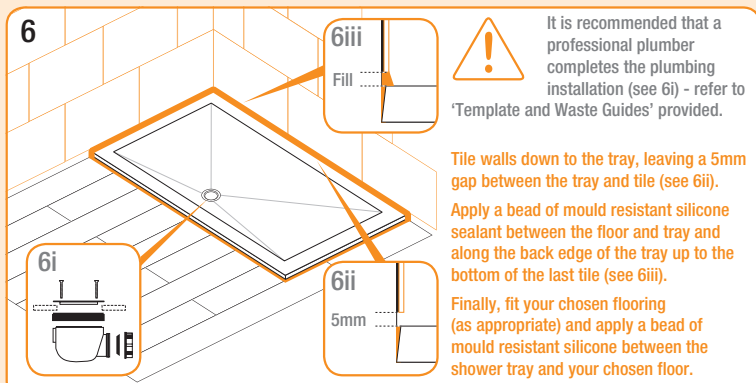
4



5

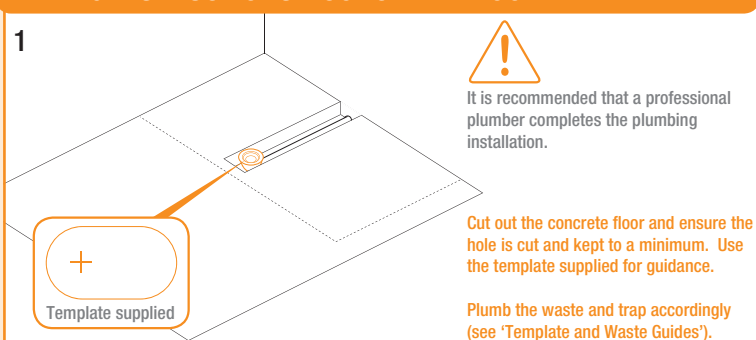


6

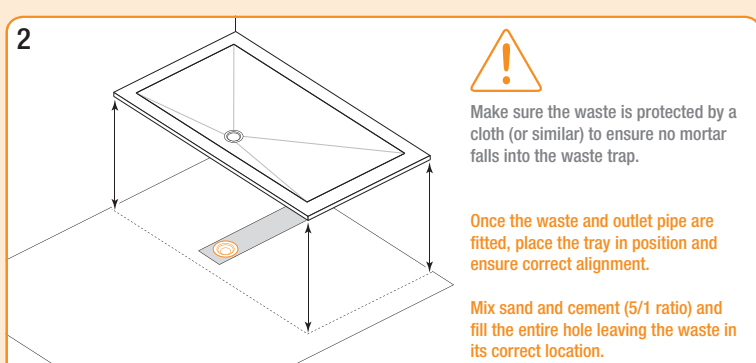


FITTING INSTRUCTIONS - CONCRETE FLOOR

1



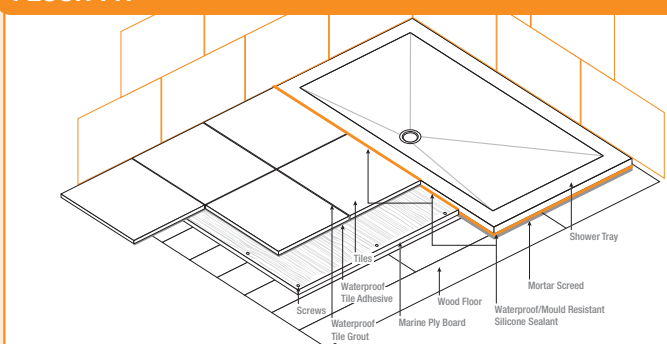
2



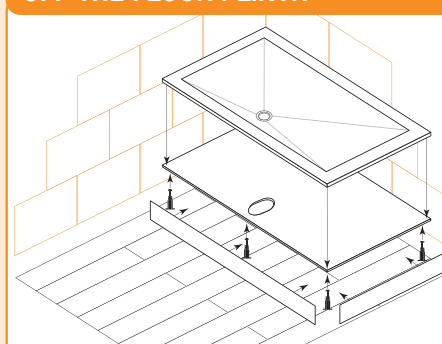
3

CONTINUE AS FROM **STEP 4** ABOVE TO COMPLETE THE TRAY INSTALLATION.

FLUSH FIT



OFF THE FLOOR PLINTH



For more problematic plumbing situations, a comprehensive 'Fitting Kit' is available. This raises the tray off of the floor to provide a simpler plumbing solution.

For further details, see your retailer or installer.