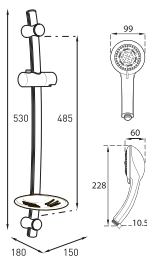
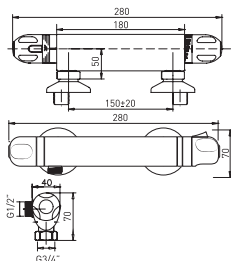


Unichrome Dove Eco

thermostatic bar mixer shower



Temperature Control	Thermostatic
Plumbing System Compatibility	Low and High Pressure
Inlet Connections	1/2" BSP
Water Entry Points	Back
Outlet Connection	1/2" BSP
Minimum Running Pressure/Flow	0.1bar @ 8l/Min
Maximum Running Pressure	5 Bar
Maximum Static Pressure	10 Bar
Open Outlet Flowrate at 0.1 bar	3.4l/M
Flow Limiter Supplied	8l/Min
Approvals	Complies BS-En 1111, 1287
Guarantee	5 years

Operating Features

- Maximum flow rate of 6 litres per minute
- Thermostatic control to within 1.5°C
- Automatic shutdown if hot or cold water supplies fail
- Adjustable maximum temperature stop
- Separate flow and temperature controls
- Rub-clean showerhead – 5 spray patterns

Finish	Code
Chrome	ECODOTHBM