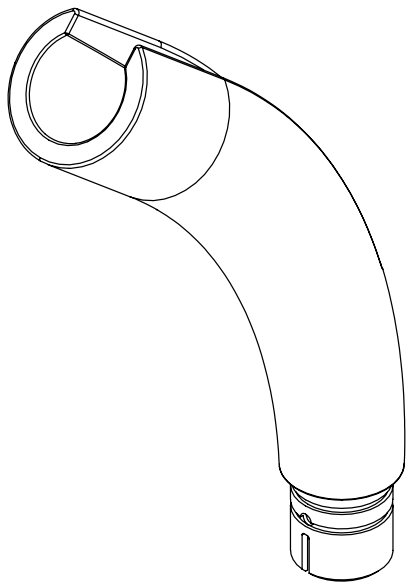


TRITON

Enhance Shower Arm

Suitable for 22mm riser rails



Dimensions are approximate

INSTALLERS PLEASE NOTE THESE INSTRUCTIONS ARE TO BE LEFT WITH THE USER

2181627A - February 2020

Enhance Shower Arm

INSTALLATION

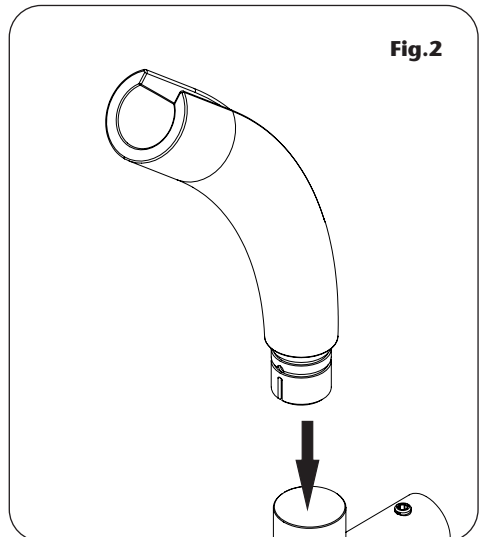
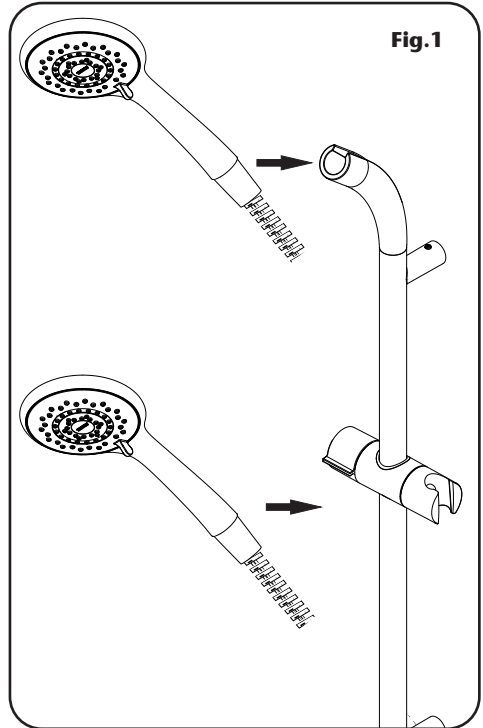
The Enhance Shower Arm allows the user to position the showerhead in one of two positions - in the moveable slider on the riser rail or in the overhead position (**fig.1**).

To fit the enhance arm, remove the trim from the top of the riser rail, then push and twist the enhance arm into the rail (**fig.2**).

Place showerhead into the desired position.

This attachment is suitable for use with the following riser rails:

<u>Description</u>	<u>Part Number</u>
Kian Slender Riser Rail Kit.....	TSKKIANCH
Pro-fit Riser Rail Kit Chrome...	TSKPROFITCH
Pro-fit Riser Rail Kit White.....	TSKPROFITWC



REPLACEMENT PART NUMBER

Description

Part number

Enhance shower arm.....	22013840
-------------------------	----------

Triton Showers
Triton Road
Nuneaton
Warwickshire CV11 4NR

Triton is a division of Norcros Group (Holdings) Limited

Customer Experience: 024 7637 2222

Trade Installer Hotline: 024 7637 8344

www.tritonshowers.co.uk

E-mail: serviceenquiries@tritonshowers.co.uk

technical@tritonshowers.co.uk

For product guarantee information please go to www.tritonshowers.co.uk/help-and-support

TRITON reserve the right to change product specification without prior notice. E&OE. © TRITON SHOWERS 2019