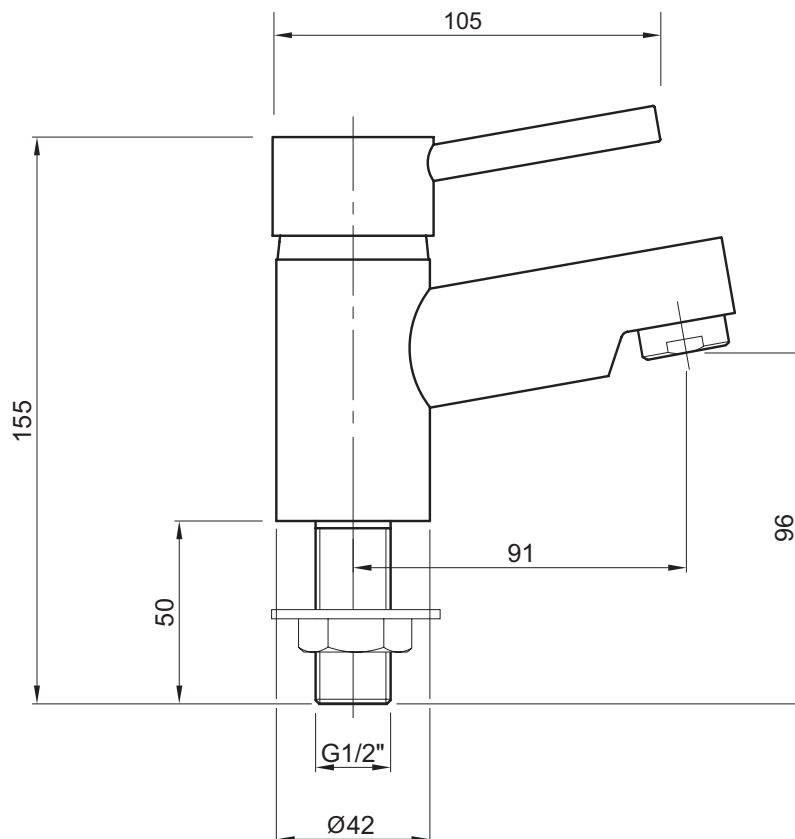


X60 basin pillar taps

1/4 turn ceramic cartridge
suitable for both high & low pressure applications
flow regulator can be added to control water usage & comply with BREEAM



X60 Basin 1/2" Pillar Taps



to specify/order:

Please use the product reference shown below.

X60 basin pillar taps

X60 Basin 1/2" Pillar Taps

X605205CP

6 LPM Flow regulator

XS9006XX

finish

Chrome plated CP.

approvals

WRAS Approved

standards

Chrome plated to BS EN248

system requirements

Can be installed on any system

recommended operating pressure

Minimum operating pressure 0.2 bar.

Maximum operating pressure 5 bar.

note

Maximum surface thickness to fit tap is 33mm.
Plastic back nuts included.



1/2" Basin Pillar Taps – X605205CP

Flow Rate (Litres per minute)	0.2 Bar	0.5 Bar	1.0 Bar	2.0 Bar	3.0 Bar	5.0 Bar
Standard Mixed	6.6	11.1	16.1	22.7	27.6	35.8
Flow Limiter Fitted (Part No:XS9006XX)	2.8	4.7	5.7	6	6	6

All measurements shown are in millimetres. Drawing sizes are not to scale.



Hotels



Commercial



Residential

Twyford
Geberit Group

237