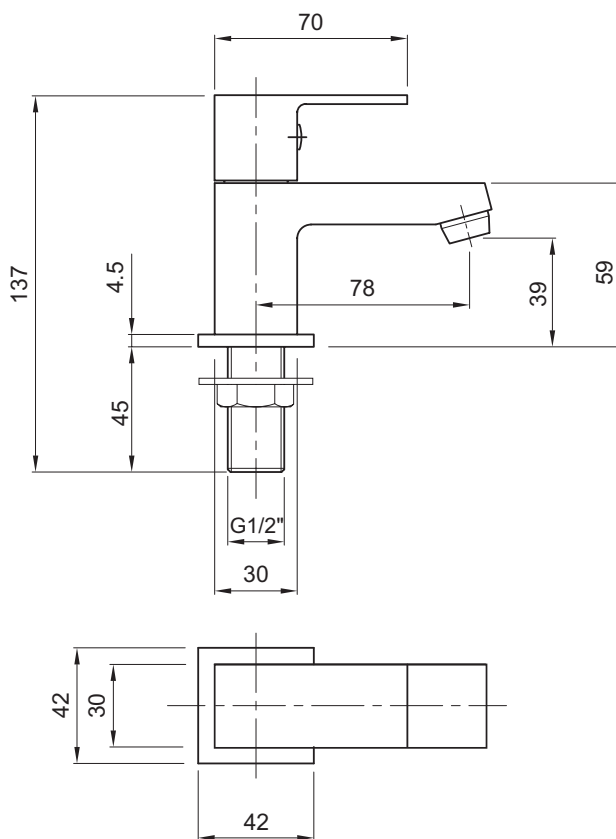


# X62 basin pillar taps

1/4 turn ceramic cartridge  
suitable for both high & low pressure applications  
flow regulator can be added to control water usage & comply with BREEAM



X62 Basin 1/2" Pillar Taps



## to specify/order:

Please use the product reference shown below.

## X62 basin pillar taps

X62 Basin 1/2" Pillar Taps

**X625205CP**

6 LPM Flow regulator

**XS9006XX**

## finish

Chrome plated CP.

## approvals

WRAS Approved

## standards

Chrome plated to BS EN248

## system requirements

Can be installed on any system

## recommended operating pressure

Minimum operating pressure 0.2 bar.

Maximum operating pressure 5 bar.

## note

Maximum surface thickness to fit tap is 33mm.  
Plastic back nuts included.



## 1/2" Basin Pillar Taps – X625205CP

Flow Rate (Litres per minute)	0.2 Bar	0.5 Bar	1.0 Bar	2.0 Bar	3.0 Bar	5.0 Bar
Standard Mixed	7.2	11.2	16.0	22.7	27.9	36.0
Flow Limiter Fitted (Part No:XS9006XX)	2.9	4.8	5.2	5.6	6.1	6

All measurements shown are in millimetres. Drawing sizes are not to scale.



Hotels



Commercial



Residential

**Twyford**  
Geberit Group

**244**