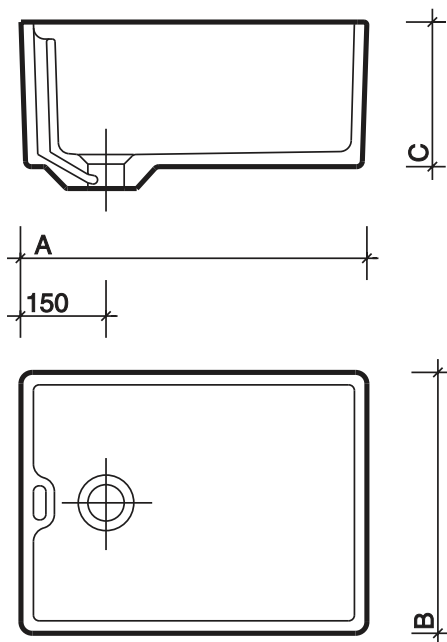


# belfast sinks

easy clean stain-resistant glazed surface  
designed to withstand heavy use



Belfast sink



## to specify/order:

Please use the product reference shown below.

### sink

a	b	c	
475 x 390 x 215mm			<b>FC1211WH</b>
560 x 425 x 255mm			<b>FC1231WH</b>
610 x 455 x 255mm			<b>FC1271WH</b>
760 x 455 x 255mm			<b>FC1301WH</b>
915 x 610 x 305mm			<b>FC1331WH</b>

### waste

Chain waste 1 1/2", slotted  
chrome plated.

**WF4333CP**

### fixings (see below table)

- (a) Build-in brackets
- (b) Screw to wall brackets
- (c) Legs and bearers

### taps & mixers

Refer to taps & mixers.

### material

Enamelled fireclay.

### colour

White WH.

### note

Build-in brackets should be used on masonry walls. Screw to wall brackets should be used on adequate timber frame walls.

Sink pattern	Build in brackets specify number	Screw to wall brackets specify number	Legs and bearers specify number
<b>FC1211WH</b>	<b>SR1332XX</b>	<b>SR1340XX</b>	<b>SR3046XX</b>
<b>FC1231WH</b>	<b>SR1333XX</b>	<b>SR1342XX</b>	<b>SR3044XX</b>
<b>FC1271WH</b>	<b>SR1333XX</b>	<b>SR1342XX</b>	<b>SR3044XX</b>
<b>FC1301WH</b>	<b>SR1333XX</b>	<b>SR1342XX</b>	<b>SR3044XX</b>
<b>FC1331WH</b>	<b>N/A</b>	<b>N/A</b>	<b>N/A</b>

All measurements shown are in millimetres. Drawing sizes are not to scale.



Hotels



Education



Commercial



Residential

**Twyford**  
Geberit Group