

sola thermostatic exposed shower valves

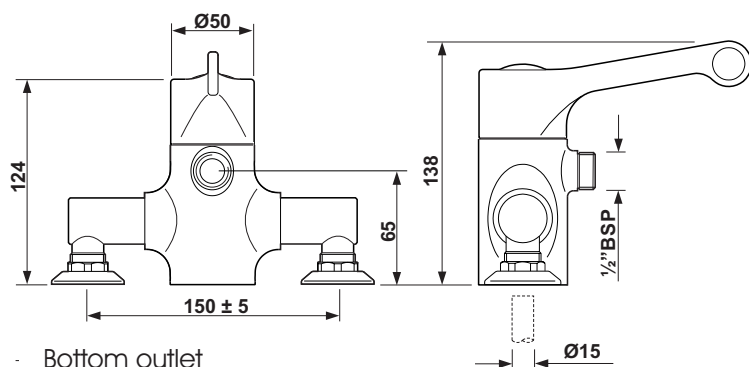
antiscald failsafe technology
thermostatic control
ergonomic operation



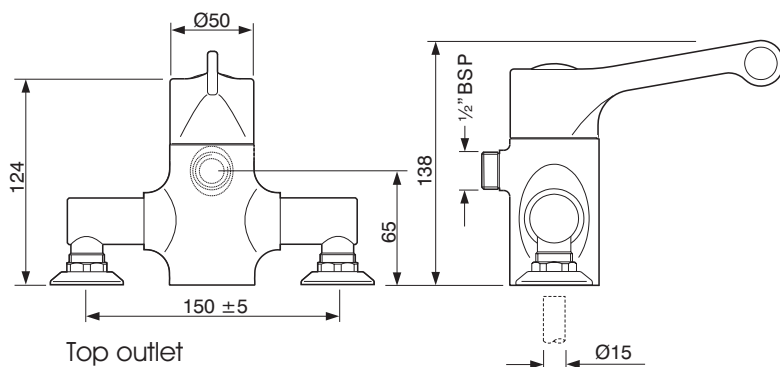
sola thermostatic shower
bottom outlet



sola thermostatic shower
top outlet



Bottom outlet



Top outlet

to specify/order:

Please use the product reference shown below.

thermostatic shower valve

Exposed valve bottom outlet **SF1136CP**
Exposed valve top outlet **SF1135CP**

shower rail

Sola Shower rail, hose & head
- single function, smooth hose **SF1256CP**
Sola Shower rail, hose & head
- multi function, braided hose **SF1261CP**

finish

Chrome plated CP.

approvals

WRAS Approved

system requirements

Suitable for use with unvented supplies, combi boilers, gravity and mains pressure systems.

recommended operating pressure

Max Inlet pressure static 10 Bar.
Max recommended dynamic pressure 5 Bar.
Min operating pressure dynamic 0.2 Bar.
Max unbalanced pressure ratio 5:1.
Inlet connections 15mm.
Outlet connections 1/2".
Max inlet temperature 85°C.
Min Temp differential to ensure failsafe between hot and cold supplies 10°C.

note

Pre-set factory temperature setting 38°C.
Suitable for use with unvented supplies, combi boilers, gravity and mains pressure systems.



Sola TMV3 Shower Valve, Exposed - SF1135CP & SF1136CP

Pressure	0.5 Bar	1 Bar	2 Bar	3 Bar	4 Bar	5 Bar
Flow Rate (Litres per minute)	8.4	11.4	15.2	18.6	22.1	23.9

All measurements shown are in millimetres. Drawing sizes are not to scale.



Hotels



Education



Commercial



Residential



Less Able

Twyford
Geberit Group