

doc.m shower pack

TMV3 approved thermostatic shower valve
fixed and moveable shower head



Doc.M shower packs white, blue or grey rails & seat

to specify/order:

Please use the product reference shown below.

Doc.M shower pack

With white grab rails and seat

With blue grab rails and seat

With grey grab rails and seat

PK7005WH

PK7005BE

PK7005GY

comprising components

Shower rail 1200 x 1200mm

Shower curtain 1800 x 2000mm x 2

Concealed shower valve with elbow (SF1555CP)

Shower rail, hose and head

Shower vandal resistant fixed head

Shower diverter

Avalon 600mm support rail x 3

Avalon hinged support rail x 2

Avalon folding shower seat and back support

note

The products included in the set and the layout details are in accordance with those laid down in the building regulations 2003 approved Doc.M effective from 1st May 2004.



approvals

LABC certificate, ref: 398-5-20

WRAS Approved

TMV3

installation

Minimum operating pressure 0.2 bar

Maximum operating pressure 10 bar

material

Grab rails in polyester coated aluminium.

colours

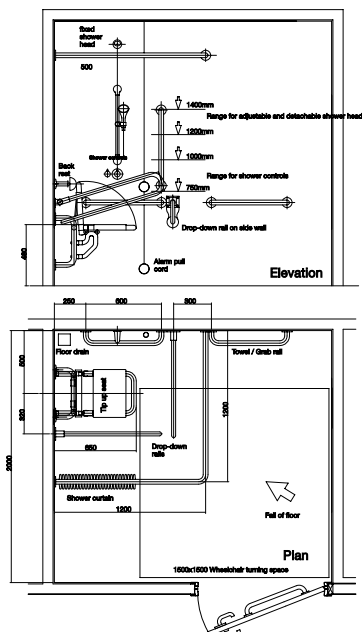
Grab rails and seat in white, blue or grey.

Shower rail and curtain white only.

White WH (White RAL 9003, Luminance Values 76)

Blue BE (Blue RAL 5011, Luminance Values 6)

Grey GY (Grey RAL 7005, Luminance Values 20)



Typical Doc.M shower room layout

All measurements shown are in millimetres.
Drawing sizes are not to scale.

Solo TMV3 Shower Valve, Concealed - SF1555CP					
Pressure	0.5 Bar	1 Bar	2 Bar	3 Bar	4 Bar
Flow Rate (Litres per minute)	8.6	10.5	15.2	18.8	22.6
					24.5



Hotels



Healthcare



Education



Commercial



Less Able

Twyford

Geberit Group

307