

# lever action mixer

self draining spout  
adjustable temperature limit stop



Lever action mixer

## to specify/order:

Please use the product reference shown below.

### sequential lever action mixer

With flexible tails

**SF5347CP**

### thermostatic mixing valve

Single applications - 15mm

**SF1037XX**

### finish

Chrome plated CP.

### approvals

TMV2 & TMV3 Approved  
when installed with SF1037XX  
WRAS Approved

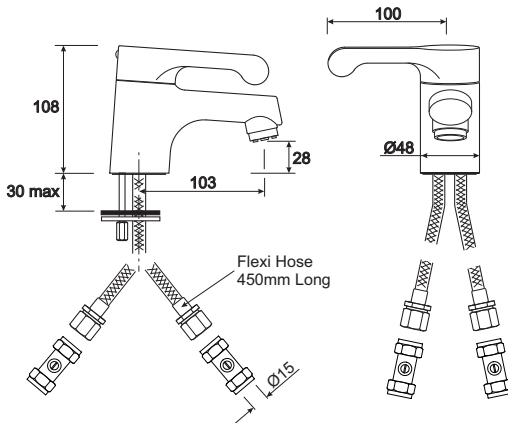


### recommended operating pressure

Minimum recommended pressure 0.2  
bar  
maximum static pressure 10 bar

### note

Suitable only for reasonably balanced hot and  
cold water supplies from a common source.



## Sequential Lever Action Mixer Tap – SF5347CP

Flow Rate Max (Ltrs/Min)	0.2 Bar	0.5 Bar	1.0 Bar	2.0 Bar	3.0 Bar	5.0 Bar
With Flow Limiters	2.5	3.6	5.5	6.0	6.0	6.0
Without Flow Limiters	2.5	4.0	8.2	9.6	9.6	11.4

All measurements shown are in millimetres.  
Drawing sizes are not to scale.



Hotels



Healthcare



Education



Commercial



Residential



Less Able

# Twyford

Geberit Group

**203**