

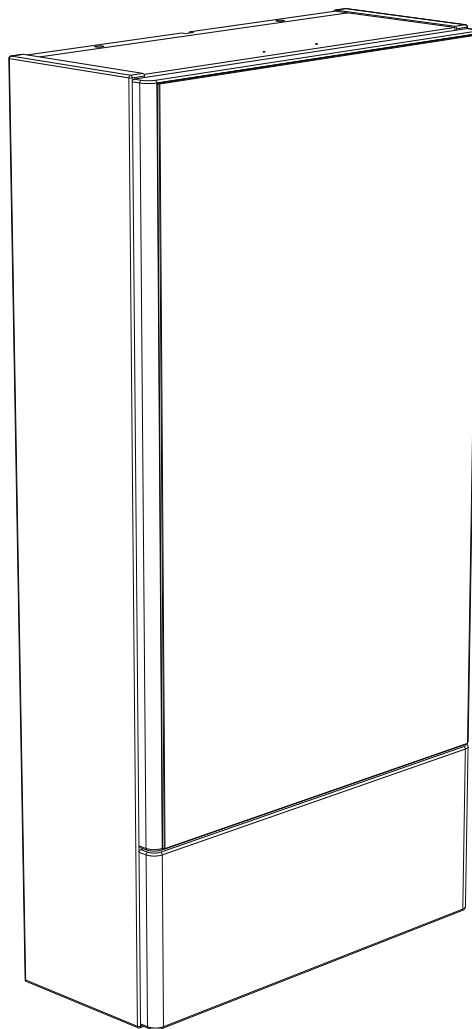
Twyford

E100

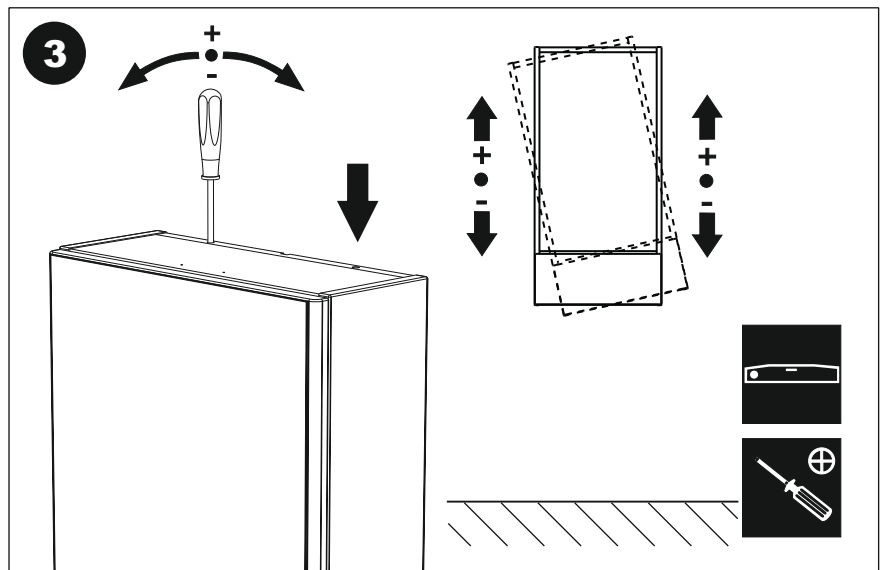
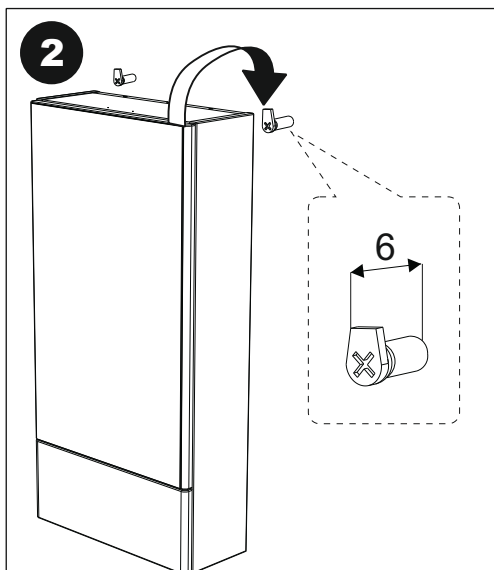
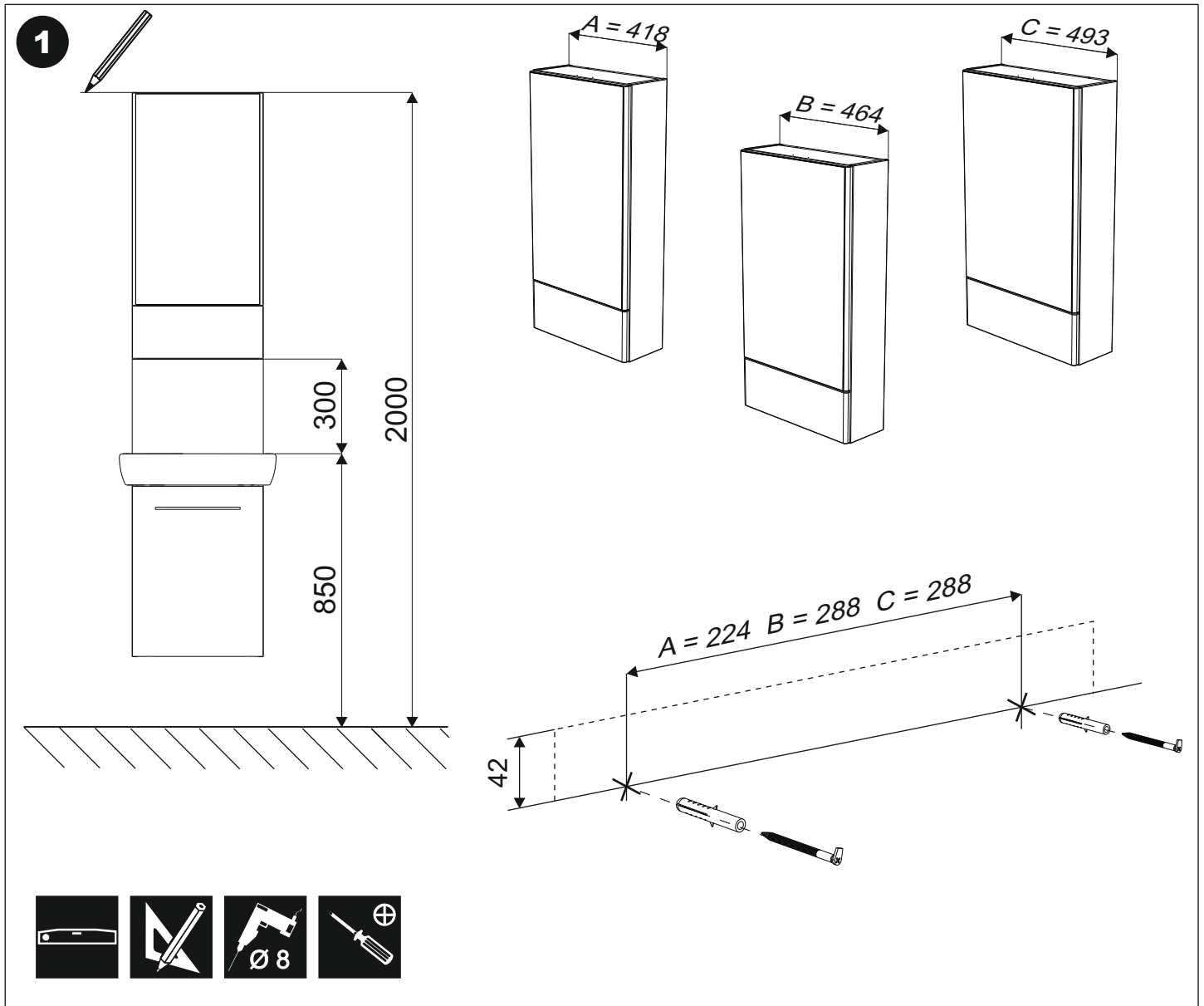
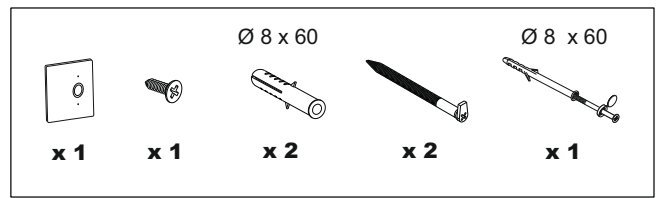


MIRROR CABINET

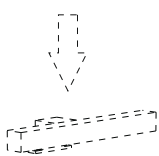
INSTALATION INSTRUCTION



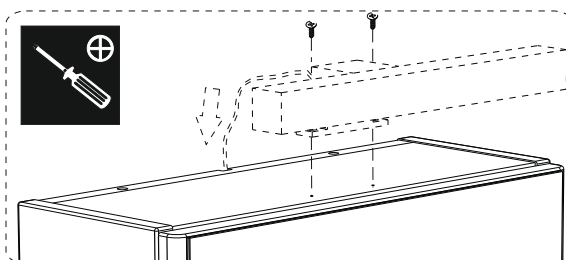
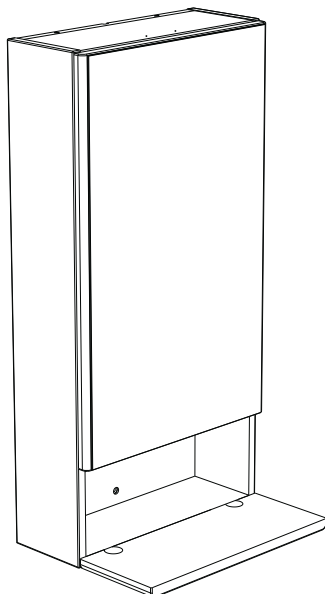
Check The product prior to installation, making sure all the components are present, and for any visible damage. We cannot accept responsibility for damage or visible faults discovered after installation.



4

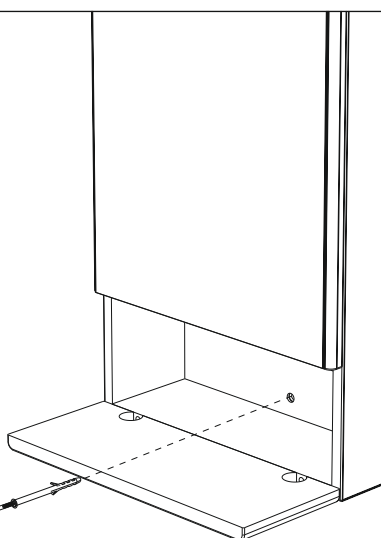


EN It can be done only by trained personnel! According to IEC 364-7-701, IEC 60364-7-713, VDE 0100 Part 701 and all applicable national and local regulations. Voltage: 230V~ Frequency: 50Hz Protection: IP44

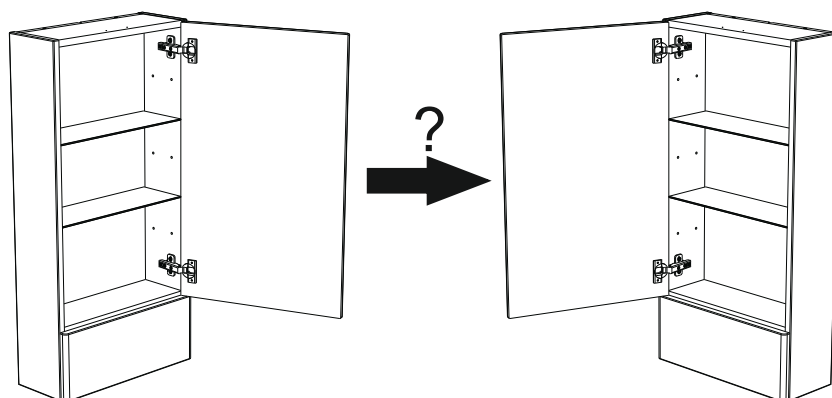


E10003XX

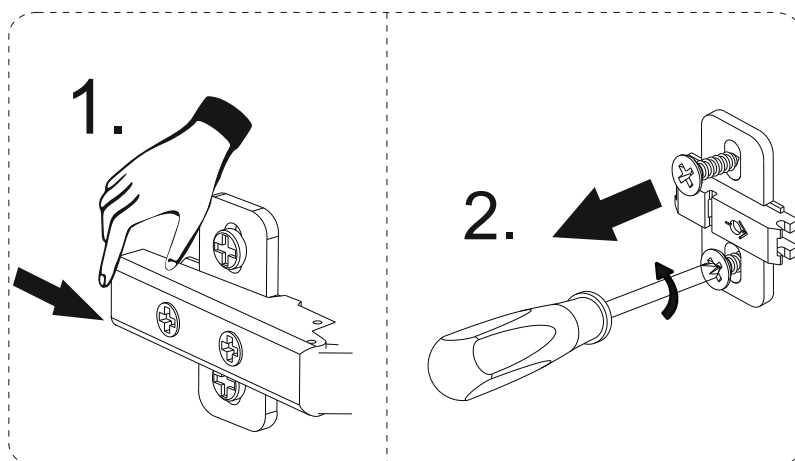
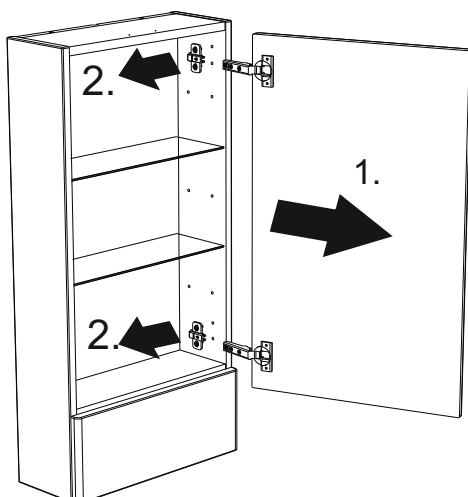
5

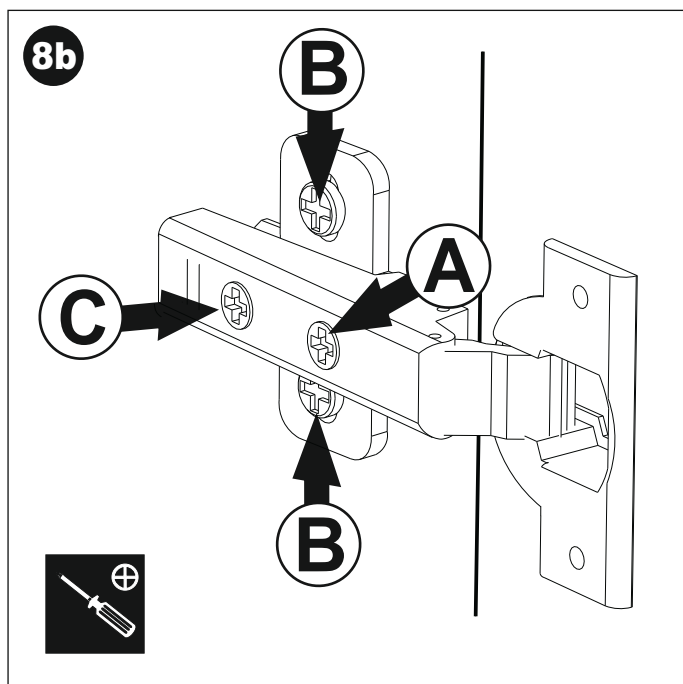
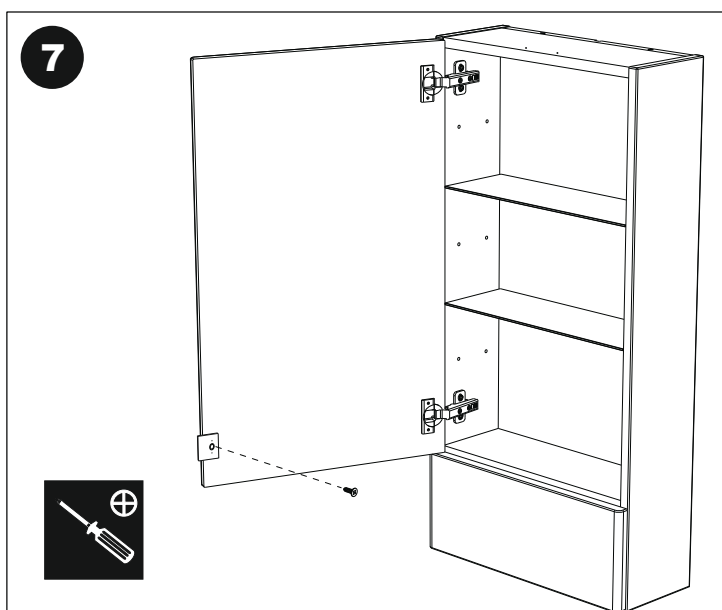
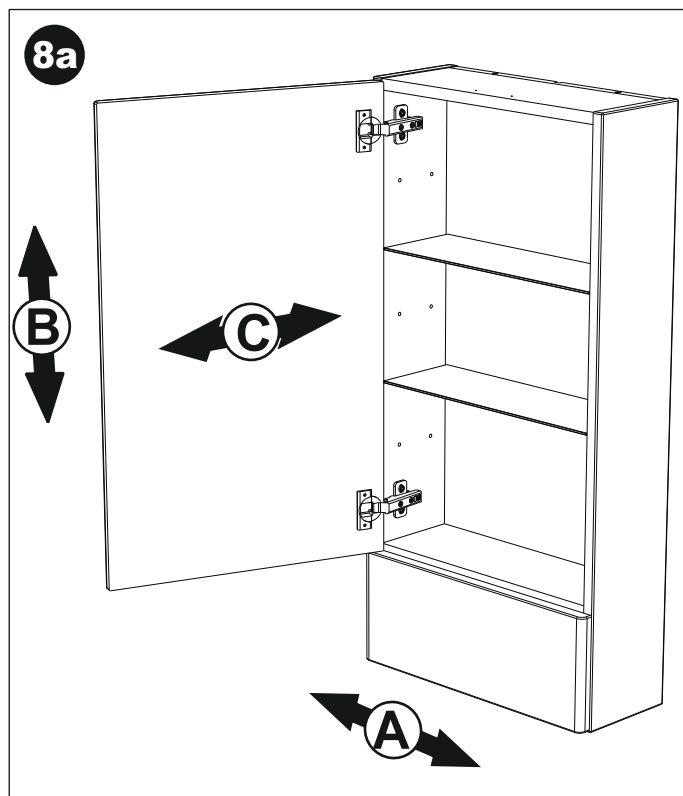
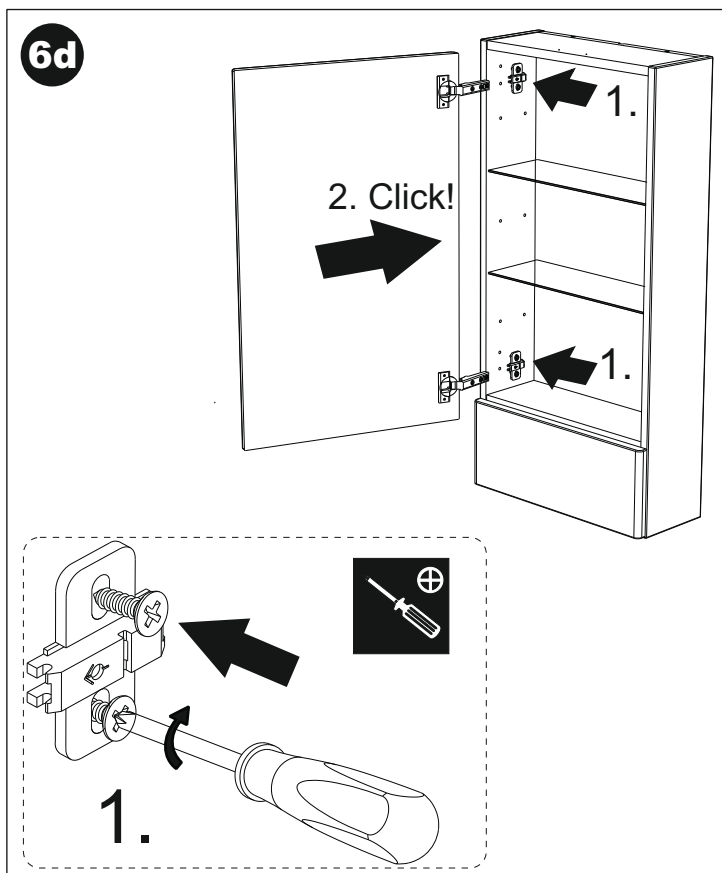
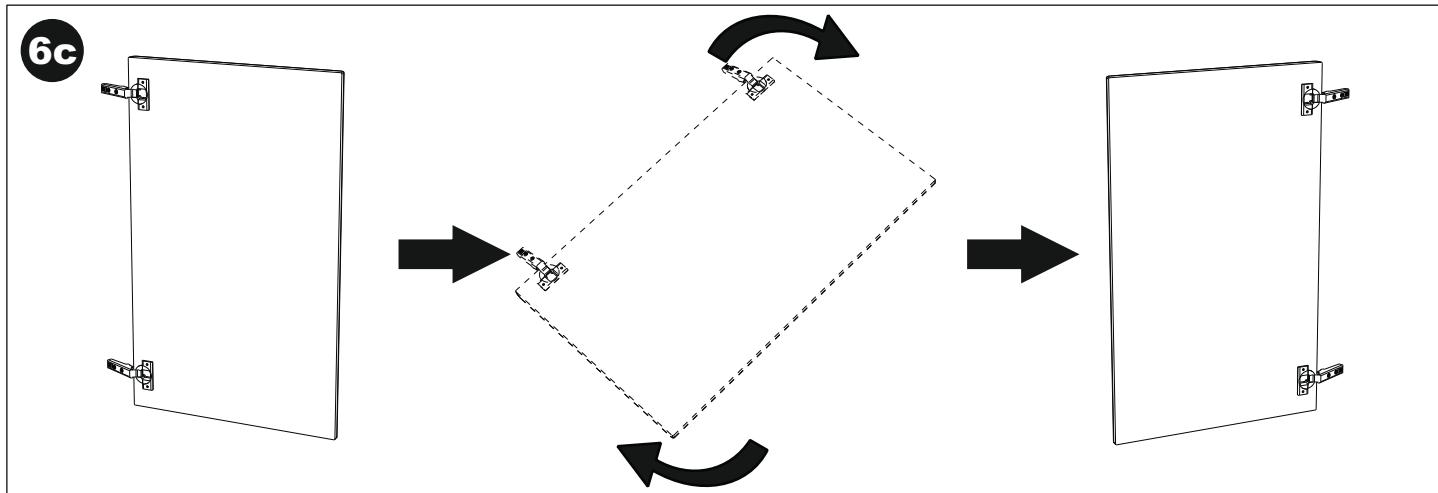


6a



6b





Cleaning and Care Instructions - Bathroom Furniture

- Bathroom furniture should be cleaned with a soft dry cloth. Avoid abrasive or sharp objects.
- For removing stubborn dirt, dampen a cloth with warm water and a mild household detergent. Dry surface thoroughly afterwards.
- Furniture should never be cleaned with cleaners containing acid or solvents. Abrasive cleaners should be avoided.
- Wipe up any standing water immediately after use.
- Any chemicals, such as nail varnish remover, hair dyes, bleach or anti- lime scale remover, spilled onto the furniture should be removed straight away.
- Any scratches of the furniture finish should be sealed to avoid water ingress.

Furniture Colour

- Furniture colour may vary slightly from the colour sample
- Lacquered and veneered surfaces are subject to aging and their colour can change over time.
- Continuous exposure to direct sunlight (UV radiation) can speed up the aging process.

Guarantee

- For information relating to the guarantee offered with this product please go to:-
www.twyfordbathrooms.com

Twyford

TWYFORD BATHROOMS LAWTON ROAD, ALSAGER, STOKE ON TRENT ST7 2DF

TEL: +44 (0) 1270 879777

FAX: +44 (0) 1270 873864

WEB: www.twyfordbathrooms.com