

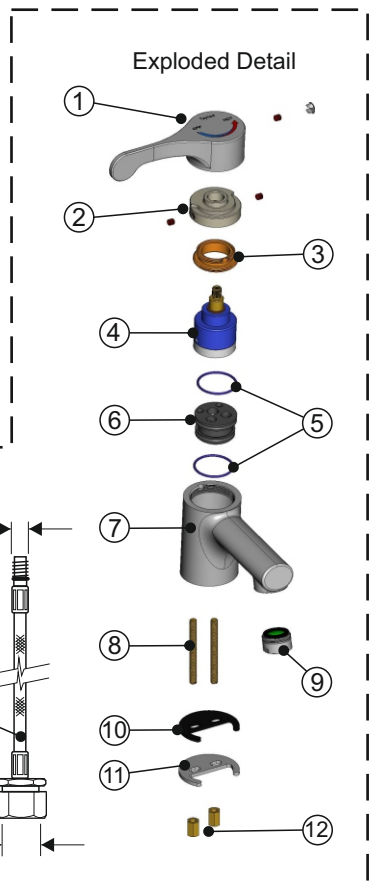
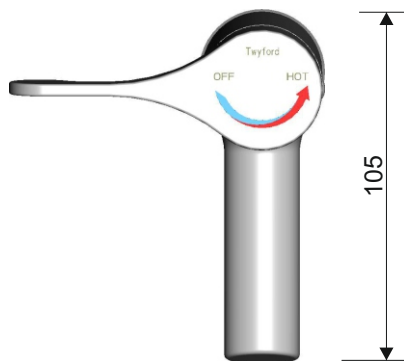
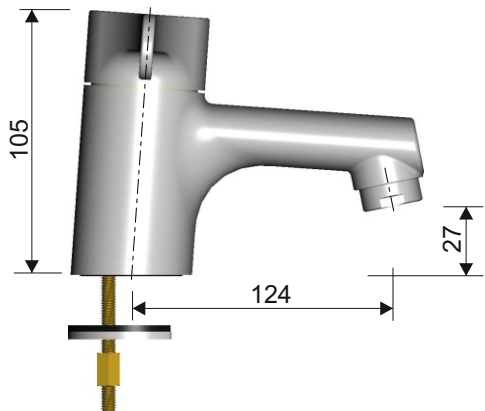
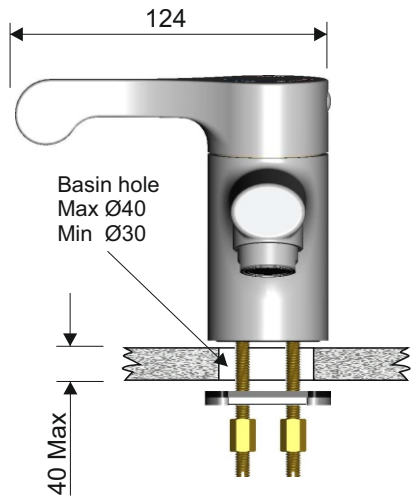


Sequential Basin Tap

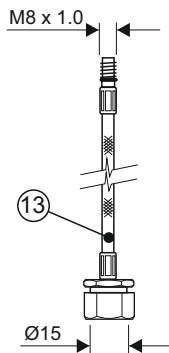


Please keep these instructions for future reference

Product Dimensions (mm)



No:	Description
1	Handle including grub screw and cap
2	Temperature limit ring
3	Cartridge clamping ring
4	Cartridge
5	"O" Rings
6	Cartridge base
7	Tap body
8	Threaded clamp bars
9	Flow straightener
10	Rubber Clamp
11	Steel Clamp
12	Clamp nuts
13	Flexi hose 445mm long 2 off, with 3 ltr/min flow regulators fitted in each
14	15x15 compression service valves X2 (not shown)



Installation

Fit the flexi tails to the base of the tap, noting which tail will be connected to the HOT and COLD. Do not tighten more than hand tight.

Assemble the tap to the basin using the supplied fixings in the order shown in the diagram to the left. Tighten the 2x 9mm A/F nuts firmly to clamp the tap in place.

Connect to the plumbing system following approved plumbing practice making sure the system has been correctly flushed of all contaminants. When connecting to the flexi-tails, please make sure they are not kinked or overly bent as this will restrict to flow of water. It is advised to fit the supplied service valves as close as practical to the tap, to aid future maintenance.

Commissioning

With the tap connected to the plumbing system and the water turned on, check for leaks.

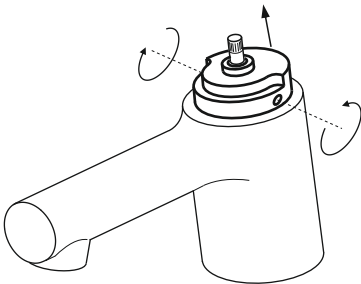
The tap is fitted with a maximum temperature stop, which limits the amount of hot water that is allowed to flow from the tap.



This Tap is not thermostatically controlled (e.g TMV 2 or 3) so the temperature of water at the outlet will vary if system temperatures or pressures change.

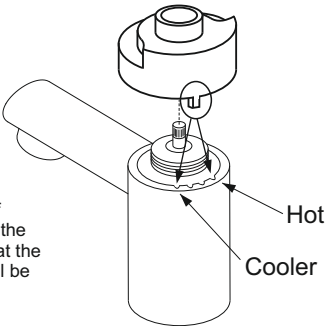
If the hot water temperature does require limiting, please do the following:-

1. Remove the handle (1). This is done by carefully removing the chromed plug at the rear of the handle and using a 2.5mm A/F allen key to slacken the internal grub screw. Take care not to lose the grub screw.
2. Carefully remove the handle by lifting upwards



Sketch A

3. Using the same allen key, remove the plastic housing (2) by slackening the 2 grub screws either side. Then lift it up. (Sketch A)
4. Relocate the nib at the back of the plastic housing into one of the slots in the tap body, noting that the water coming out of the tap will be cooler the further it is placed clock-wise. (Sketch B)



Sketch B

5. Re-tighten the 2 grub screws in the plastic housing and re-fit the handle. Check that the maximum hot water temperature is to your requirements, if not, repeat from step 1 above.

Operation

With the handle in the off position (9:00 o'clock) rotating the handle in the anti-clockwise direction progressively opens the cold inlet. Continuing in the anti-clockwise direction will allow hot water to be added to the flow until full hot is achieved.

Technical Information

Minimum Recommended Pressure	0.2 Bar
Maximum Static pressure	10 Bar

Flow Rate Max (Ltrs/Min)	0.2 Bar	0.5 Bar	1.0 Bar	2.0 Bar	3.0 Bar	5.0 Bar
With Flow limiters Fitted	2.5	3.6	5.5	6.0	6.0	6.0
Without Flow Limiters	2.5	4.0	8.2	9.6	9.6	11.4

Twyford Guarantee

At Twyford, we want to make things as easy as possible for our customers. That's why we design products that are easy to fit and use, and that are quality tested to make sure they won't let you down. It's also why we offer solid guarantees on all products, effective from the date of purchase, to give you peace of mind.

These Twyford taps are covered by a **5 year guarantee**.

Guarantee Terms and Conditions

This guarantee is in addition to your statutory and other legal rights and is subject to the following conditions:

- The product was purchased within the United Kingdom or Republic of Ireland.
- The guarantee applies solely to the original purchaser with proof of purchase.
- The installation must allow ready access to all products for the purpose of inspection, maintenance or replacement.
- Repair under this guarantee does not extend the original expiry date. The guarantee on any replacement parts or products ends at the original expiry date.
- Any part found to be defective during the guarantee period will be replaced without charge, providing that the product has been installed in accordance with the instructions given in this guide and used as the manufacturer intended.

The guarantee does not cover damage or defects caused by:-

General wear and tear (including special non-chrome finishes) components such as:-

- Filters, seals, 'O' rings and washers)
- incorrect installation
- repair using non-Twyford parts
- accidental or wilful misuse

General Cleaning

Your fitting has a high quality finish and should be treated with care to preserve the visible surfaces. All finishes will degrade if not cleaned correctly. The only safe way to clean your product is to wipe with a soft damp cloth. Stains can be removed using washing up liquid.

All bathroom cleaning products (powders and liquids) will damage the surface of your fitting, even the non-scratch cleaners.

Note: Never use abrasive detergents or disinfectants or those containing alcohol, hydrochloric acid or phosphoric acid.

We advise that your fitting is regularly serviced in hard water areas to maintain optimum performance.

- corrosion and the use of inappropriate cleaning products.
- system debris including the build up of limescale (which can be controlled through regular servicing and maintenance).

The guarantee does not cover compensation for loss of use of the product or consequential loss of any kind.

In the interests of continuous product improvement, Twyford reserves the right to alter product specifications without notice.

The Twyford Product Guarantee does not affect your statutory rights as a consumer.

Need help?

If this product does not function correctly when first used, contact **The Technical Department on 01926 516800**

where our expert team of advisors will be able to offer you help and advice.

Problems during the guarantee period

In the unlikely event that you encounter any problems with the product during the guarantee period, contact **The Technical Department on 01926 516800** with your proof of purchase and we will work to resolve the problem quickly.

Technical support hotline

(Tel: **01926 516800**) with access to fully trained advisors who can offer installation advice, talk you through quick maintenance checks, or recommend the best course of action to fix any problems with a product.

Contact Us

For any queries please contact us or visit our website for further information:

Email: technical@geberit.co.uk

Website: www.twyfordbathrooms.com

Telephone: +44 (0) 1926 516800