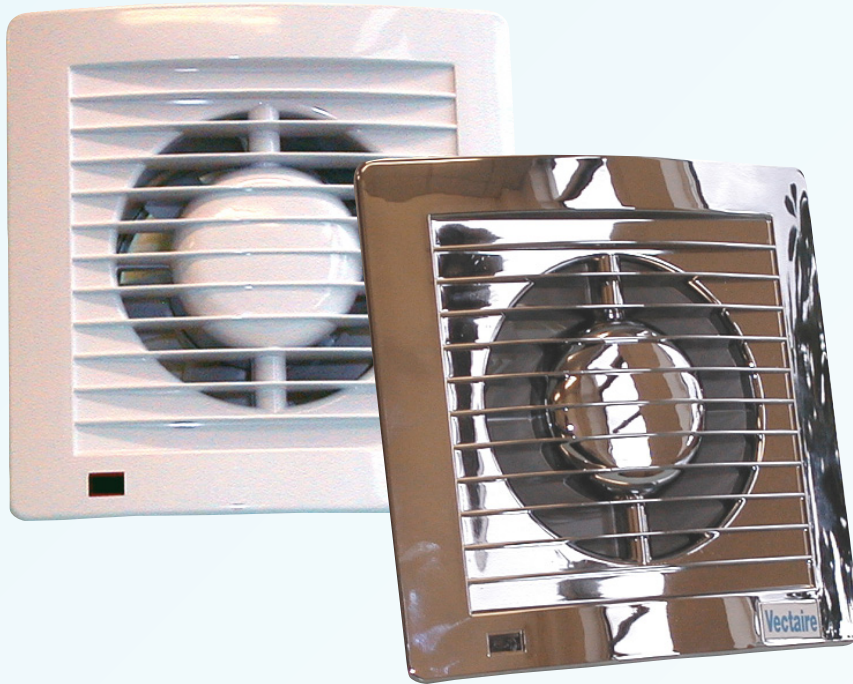




"AS10 Plus" - very high performance



- Slimline axial fans
- Can be ducted up to 6m
- White or Chromium
- 8 models
- Timer, Humidity Control and Passive Infra Red models
- IPX4 - Splashproof
- For toilets, shower-rooms and bathrooms
- For walls, ceilings or panels
- Fixed shutters
- Complies with Building Regulations Approved Document F2006)

GENERAL

- axial fans to exhaust air and fumes directly outside or through **ducting up to 6 metres in length**
- advanced aeraulic design for improved pressure characteristics
- **AS10Plus** fans will extract 20.3 litres/sec (73m³/hr) at a pressure of 20Pa
- streamlined for improved air flow
- indicator to show when operating
- ultra slim profile for unobtrusive installation
- incorporates backdraught shutter
- innovative impeller design to guarantee low noise levels
- adjustable timer - 3-25 minutes
- dynamic humidistat with night time set back and anti-hunting device
- wiring can be surface mounted or recessed
- **IPX4 - Splashproof** - can safely be installed in Zones I and II

SPECIFICATION

- casings from shockproof, high quality technopolymer
- double insulated motors of shaded pole type mounted on self-lubricating, sealed ball bearings for long life
- energy efficient design
- motors incorporate thermal cut-out
- maximum ambient temperature - 40°C

COMPLY WITH

- EN60335-2-80
- EC Low Voltage Directive 73/23-93/68
- EC Directive EMC89/336
- CE marked
- Keymark Approved

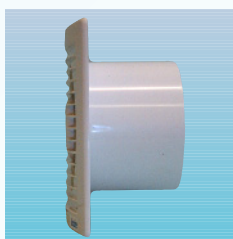
RANGE

White:

- **AS10Plus** standard models
- **AS10TPlus** overrun timer
- **AS10HTPlus** humidistat, timer
- **AS10PIRPlus** passive infra red, timer, neon

Chromium:

- **AS10CrPlus** standard models
- **AS10TCrPlus** overrun timer
- **AS10HTCrPlus** humidistat, timer
- **AS10PIRCrPlus** passive infra red, timer, neon



Ultra low profile

PIR model



TYPICAL SPECIFICATION

Supply and install an AS10TPlus axial fan with integral over-run timer (adjustable between 3 and 25 minutes) as supplied by Vectaire Ltd, Lincoln Road, Cressex Business Park, High Wycombe, Bucks, HP12 3RH.

The fan is to be suitable for installation either into a ceiling, wall or panel (with the appropriate accessories), and have the capability of being ducted for up to 6m. There should be a neon on the front of the fan to indicate when it is operating.

The fan casing should be made of shockproof, high quality technopolymer, contain a motor with sealed, self-lubricating bearings, and be protected with a thermal cut-out.

The fan should be double insulated and be suitable for installation into Zones I and II.

The fan is to be CE marked and comply with current EC Low Voltage Directive EMC89/336 and with BSEN60529. The fan should finally comply with Building Regulations requirements for installation into a toilet, bathroom or shower room.



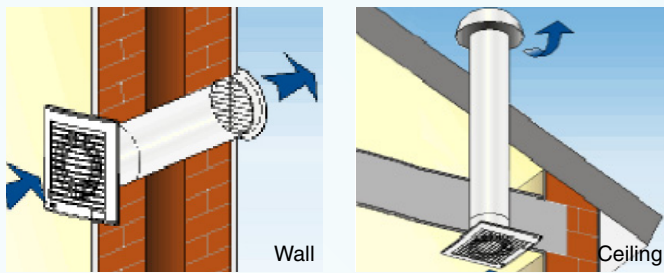
Tel: +44(0)1494 522333
Fax: +44(0)1494 522337

Vectaire Ltd
Lincoln Road, Cressex Business Park
High Wycombe, Buckinghamshire, HP12 3RH

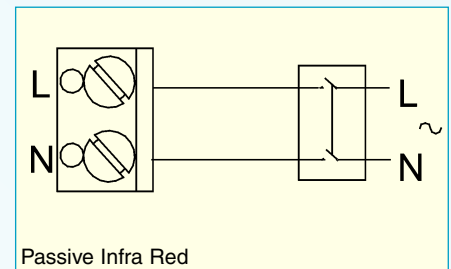
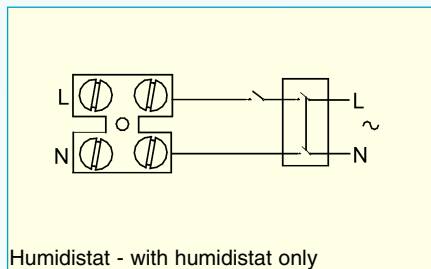
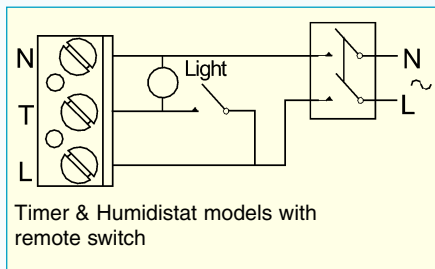
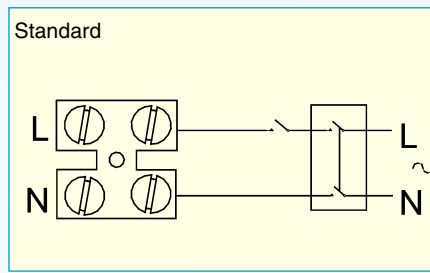
Email: sales@vectaire.co.uk
Web: www.vectaire.co.uk

TECHNICAL CHARACTERISTICS

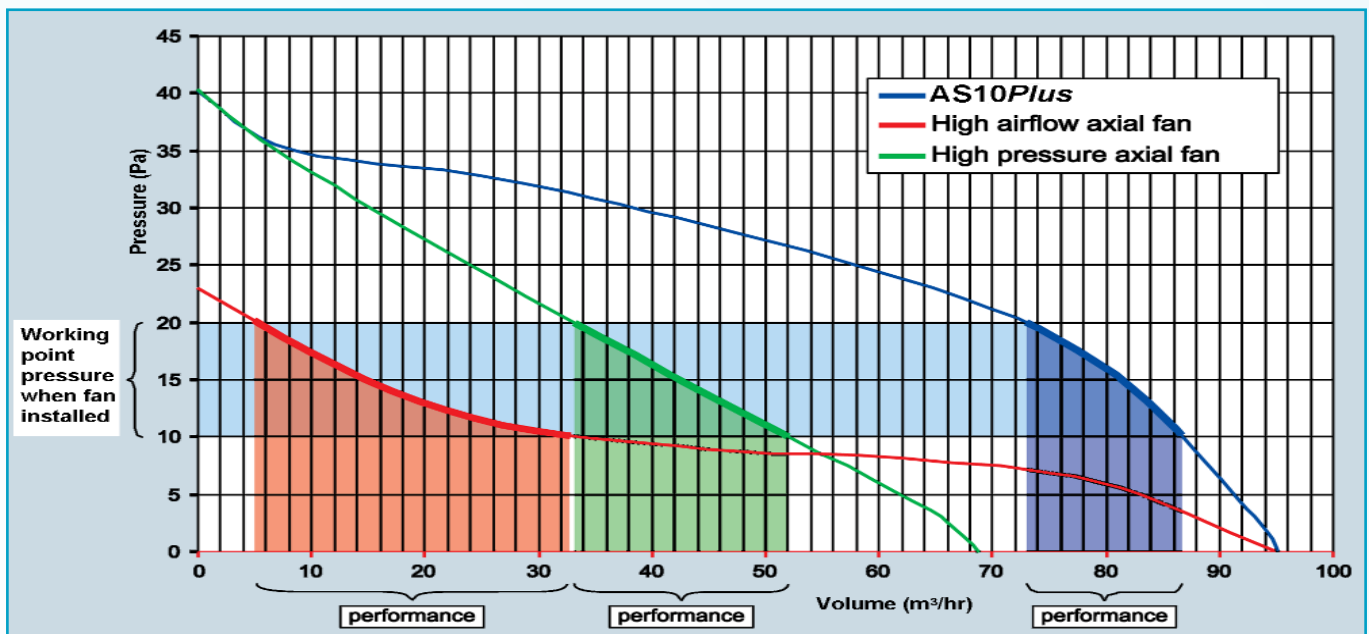
INSTALLATIONS



WIRING DIAGRAMS



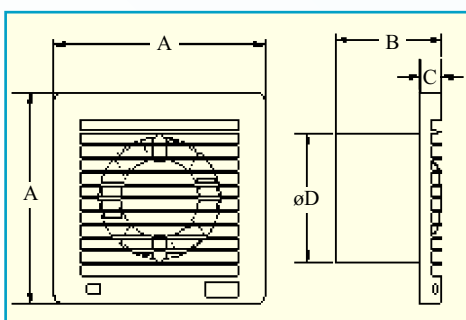
TYPICAL 100MM DIA AXIAL FAN CURVES



TECHNICAL DATA

| Model | m ³ /hr | litres/sec | Max mmH ₂ O | Max Pa | Volts | Hz | Watts | dbA | Hole dia mm | IPX4 | Dim A mm | Dim B mm | Dim C mm | Dim D mm |
|------------|--------------------|------------|------------------------|--------|-------|----|-------|-----|-------------|------|----------|----------|----------|----------|
| AS 10 Plus | 95 | 26 | 4 | 40 | 240 | 50 | 14 | 31 | 100 | yes | 160 | 95 | 17 | 98 |

DIMENSIONS



ACCESSORIES



FULL RANGE OF ACCESSORIES AVAILABLE INCLUDING FLEXIBLE AND FLAT DUCTING