



m a n u a l

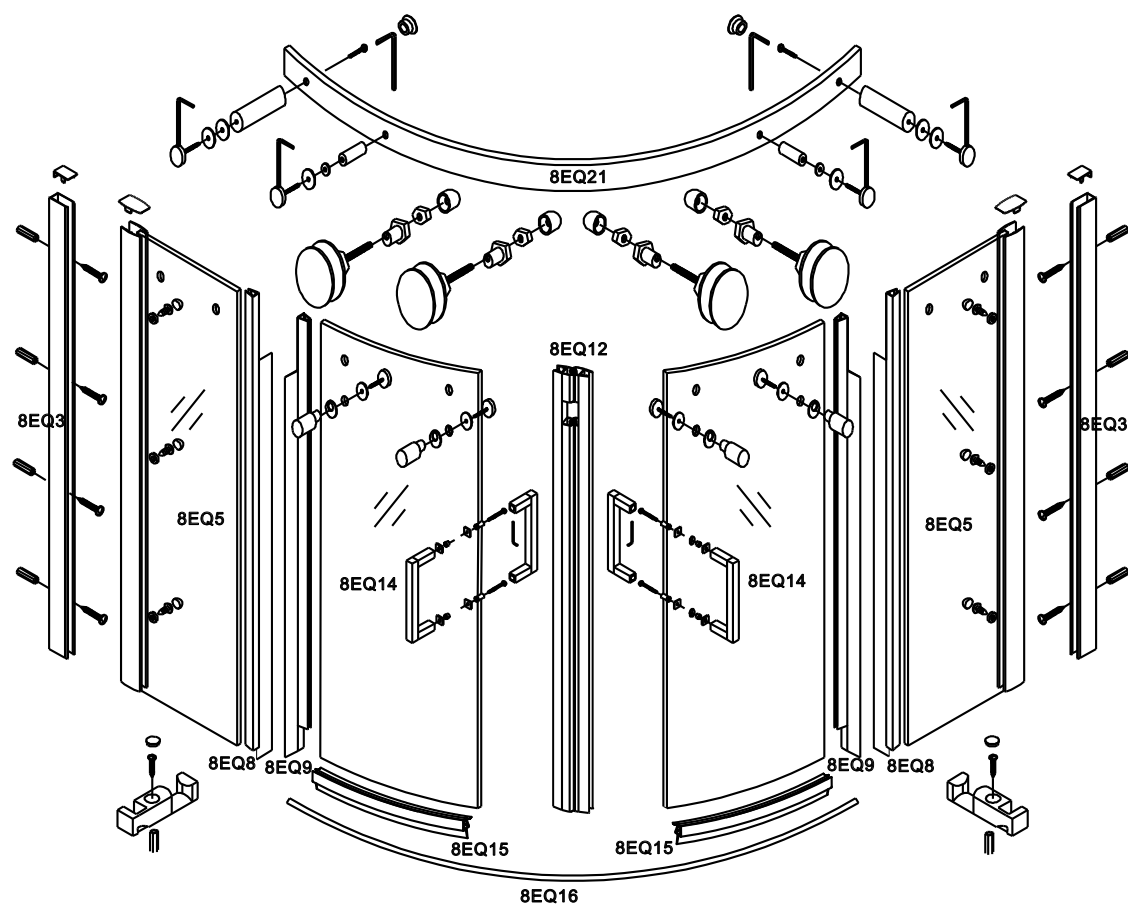
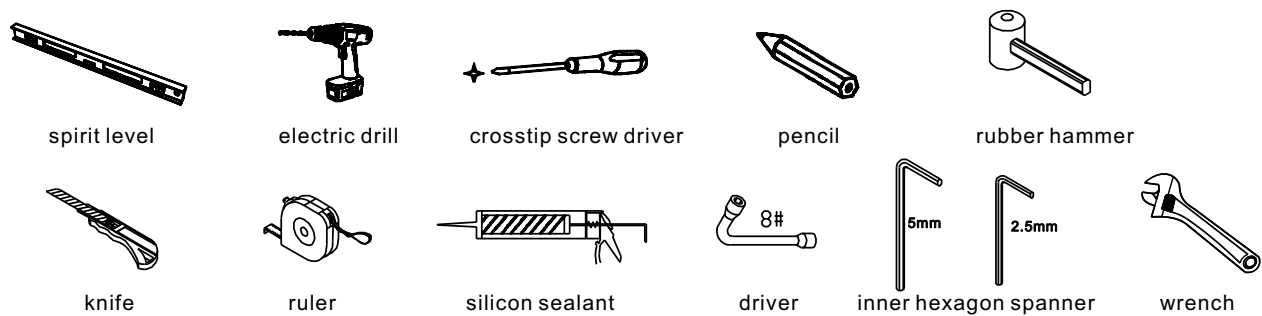


EOS Quadrant

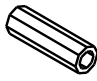



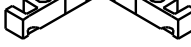
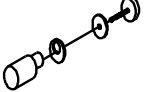
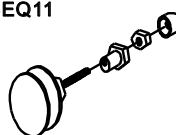
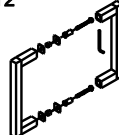
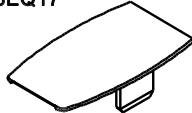

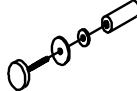
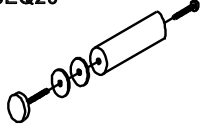
Installation instructions:
Quadrant
Adjustment range: (-25mm / -5mm) x (-30mm / -5mm) x 1900mm

Mounting Preparation
After opening the packaging, read the instructions carefully. Check whether all parts are present and there is no sign of shipping damage. If you find any problem, please contract your retailer directly.

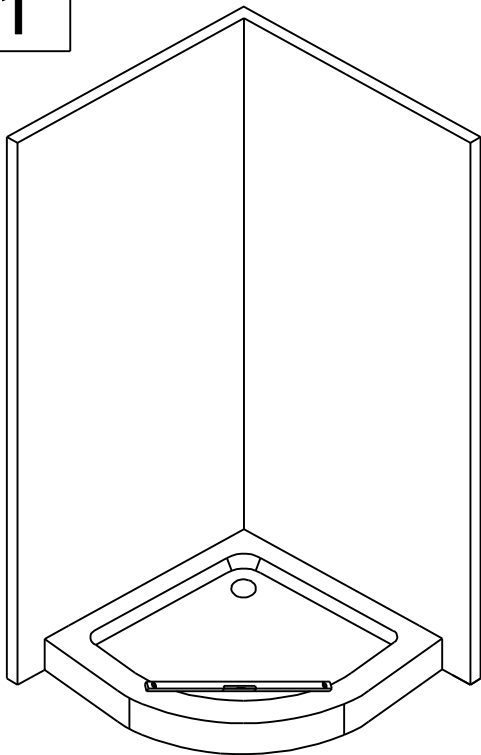
Necessary tools:



Packing list:

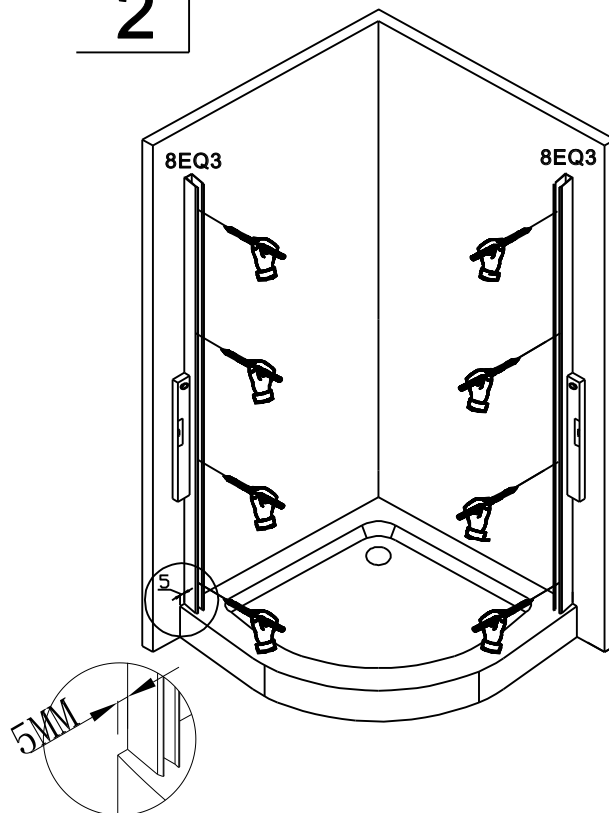
8EQ1  10x	8EQ2 ST4X30  10x	8EQ4  6x	8EQ6  4x	8EQ7  1x	8EQ10  4x
8EQ11  4x	8EQ12  2x	8EQ17  2x	8EQ18  2x	8EQ19  2x	8EQ20  2x

1



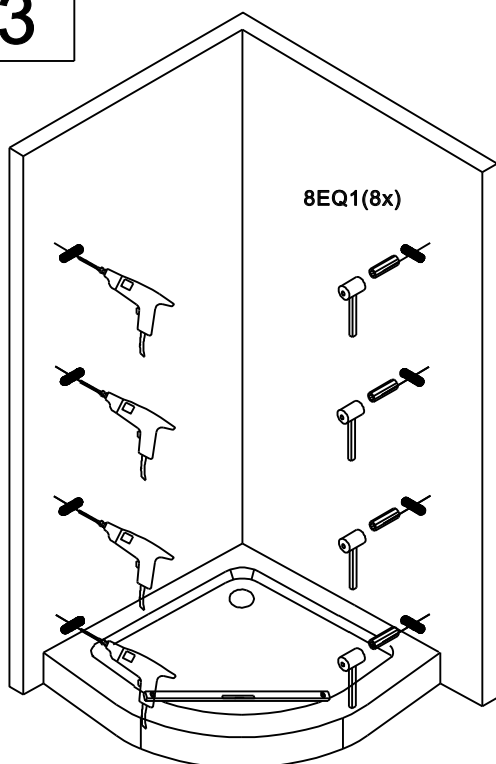
1. If the quadrant is placed onto a tray, first take a spirit level to check whether the tray is placed horizontal. In case the quadrant is installed directly onto the floor, please proceed with step 2.

2



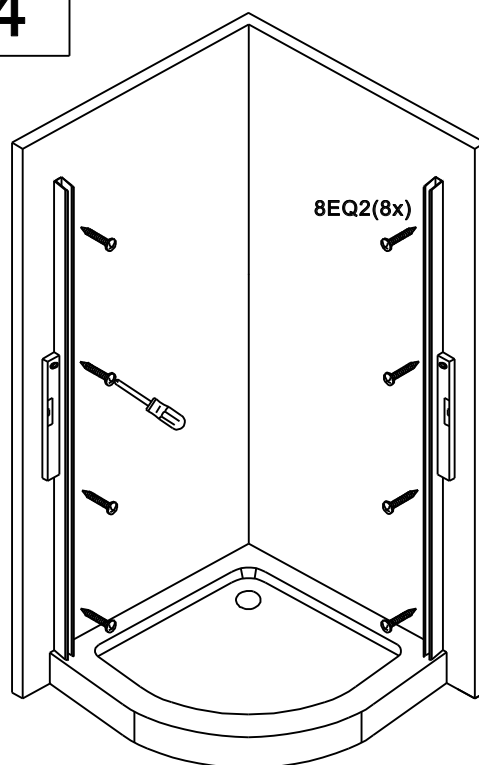
2. Put the wall profiles 8EQ3 against the wall, ensuring the distance between the profile and the wall is correct. Please make sure profile to be 5mm away from outside edge. Adjust the profile to make sure it is vertical by using a spirit level. Mark the holes on the wall.

3



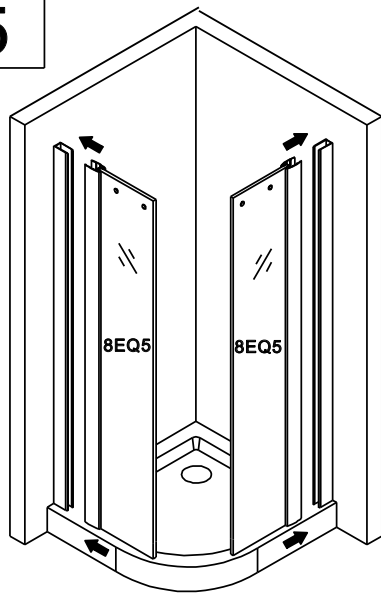
3. Drill the holes ($\varnothing 6\text{mm}$) according to the marks and insert the wall plugs 8EQ1 into the holes.

4



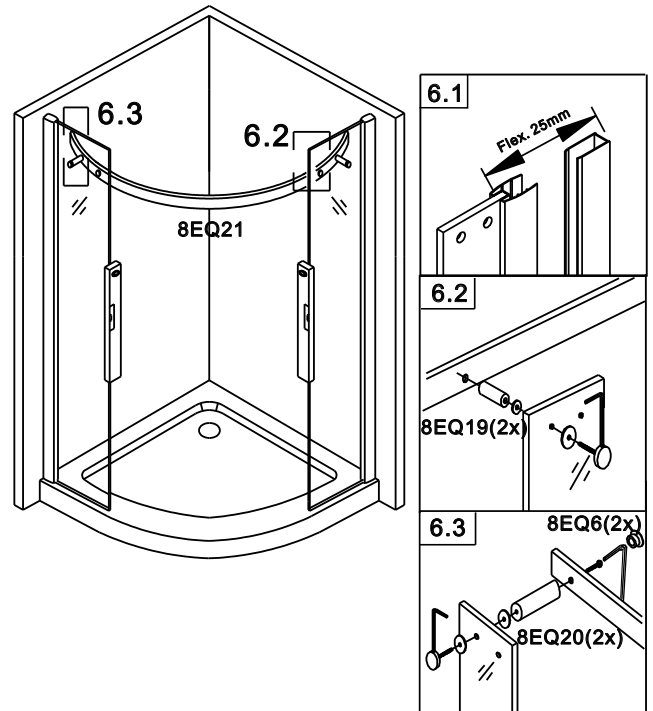
4. Fix the wall profiles 8EQ3 with the $\text{St}4 \times 30$ screws 8EQ2 to the wall.

5



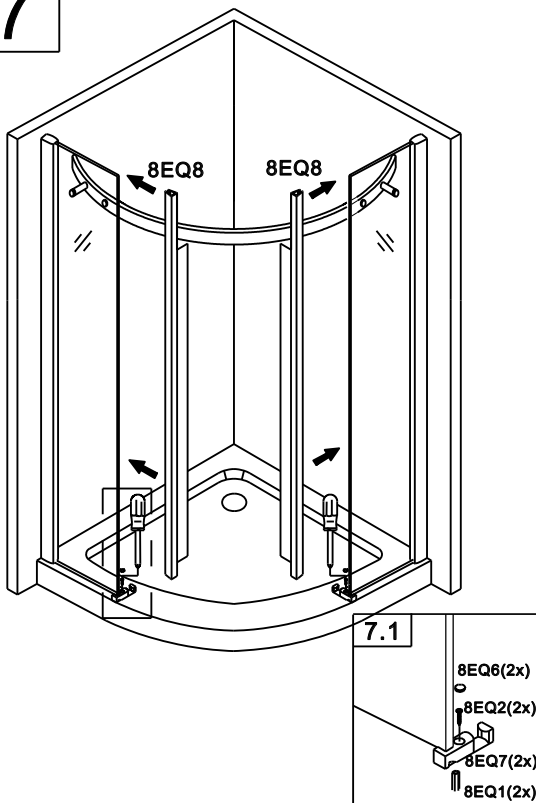
5. Insert the fixing glass 8EQ5 into the wall profiles.

6



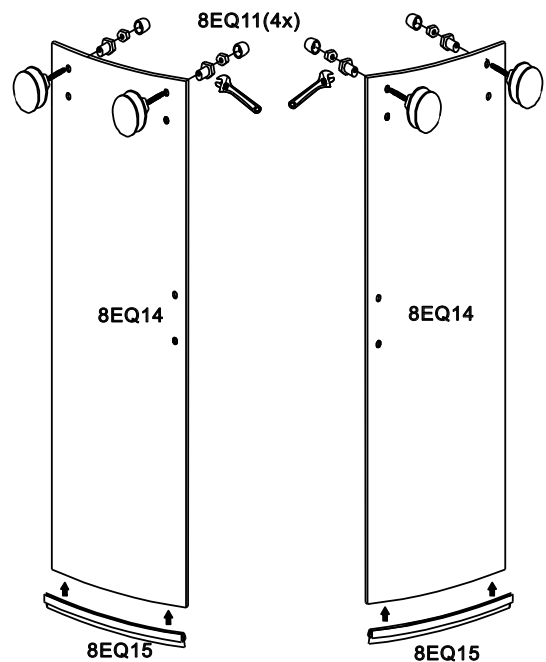
6. Adjust the position of vertical profile and wall profile to suitable position and then mount rail profile 8EQ21 by assembling fixing part 8EQ19 and 8EQ20 on fixing panels. Cover 8EQ6 on the back of 8EQ20.

7



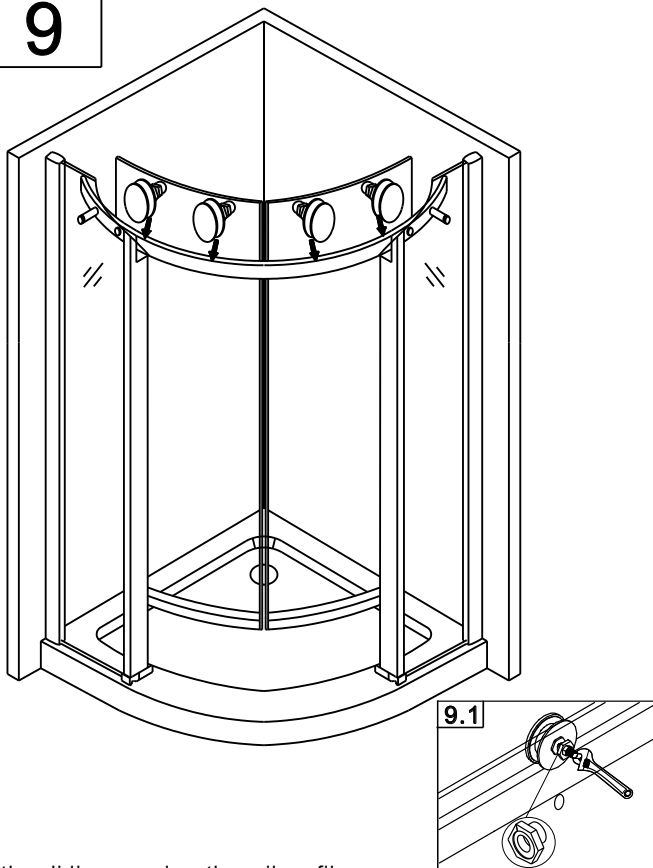
7. Attach the vertical sealer 8EQ8 on the fixing panel 8EQ5. Put the bottom bracket 8EQ7 on the fixing glass panel and mark the hole for the bracket. Drill the holes (6mm) according to the marks and insert the wall plugs 8EQ1 into the holes. Fix the bracket 8EQ7 with the St4x30 screws 8EQ2 to the tray. Put the cover 8EQ6 on screw.
Attach the vertical sealer 8EQ8 to fixing panel 8EQ5.

8



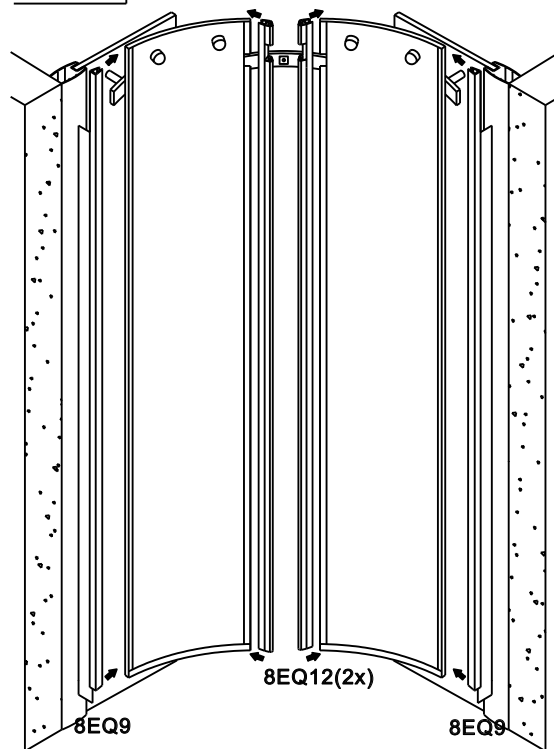
8. Assemble rollers 8EQ11 on sliding panel 8EQ14. Attach bottom seal 8EQ15 on the bottom of glass.

9



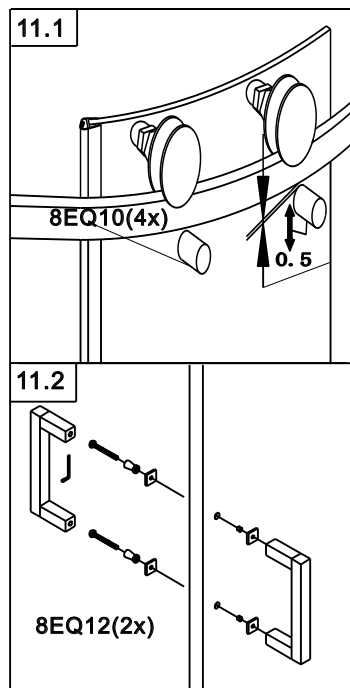
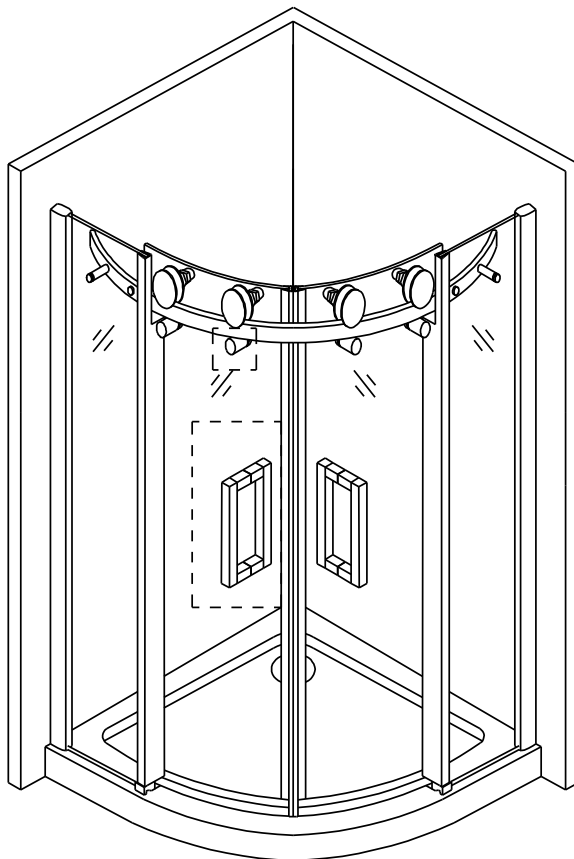
9. Put the sliding panel on the rail profile. Adjust the top roller to make sure sliding panel is vertical to the rail profile. The roller's washer is eccentric. Please adjust the eccentric washer to right position and fasten the nut.

10



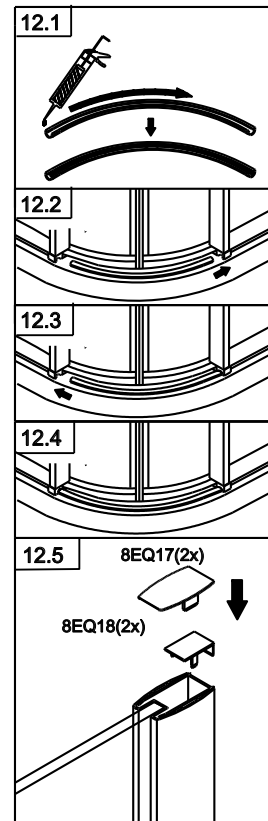
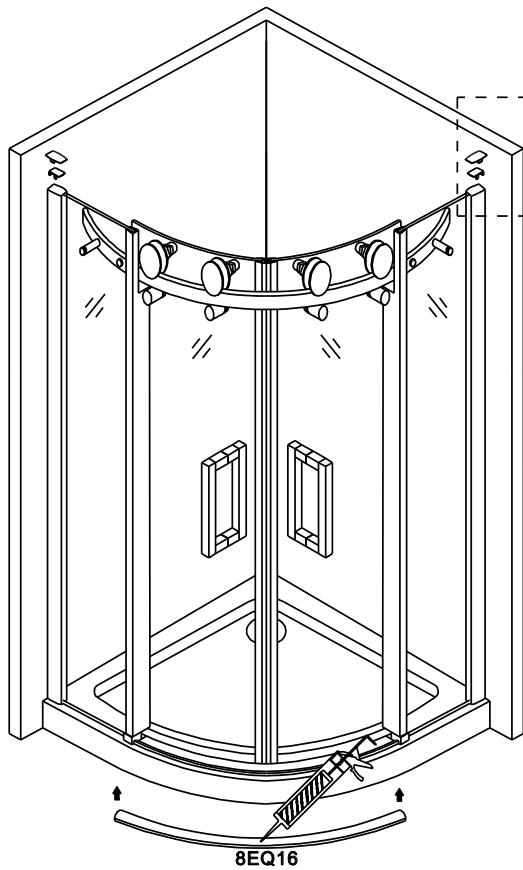
10. Attach magnetic strip 8EQ12 to sliding panel 8EQ14. Attached vertical sealer 8EQ9 to the other side of sliding panel.

11



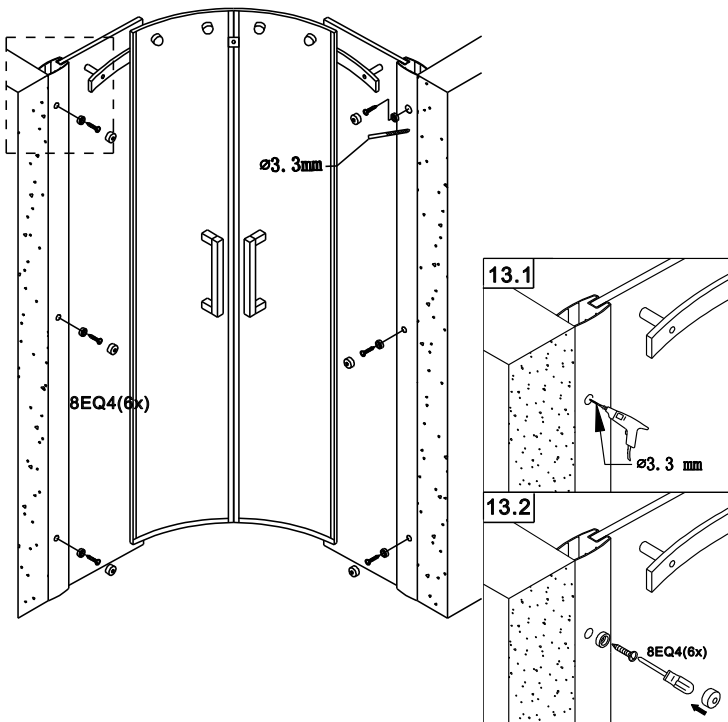
11. Assemble the fixing part 8EQ10 on sliding panel below rail profile. 8EQ10 is eccentric. Adjust the distance between rail profile and 8EQ10 to be 0.5mm. Mount handle 8EQ12 on the sliding panel.

12



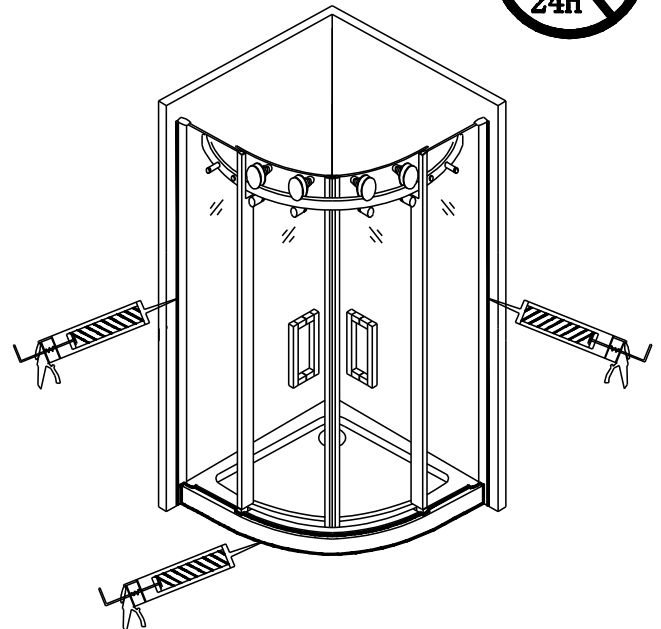
12. Put silicon glue on the back of bottom aluminum strip 8EQ16. Put it on the tray edge between brackets 8EQ7. Put the profile cover 8EQ18 on the vertical profile and put profile cover 8EQ17 on the wall profile.

13



13. Drill the holes (6mm) on vertical profile into wall profile 8EQ3 and door profile. Use rubber washers and screws 8EQ4 to fix them in place. Press the screw caps over screws.

14



14. Finally, at all points connects to the wall, shower tray/floor and the profiles, use silicone sealant only on the outside of the shower enclosure.